

UPDATE OF THE BASIC FUEL PRICE

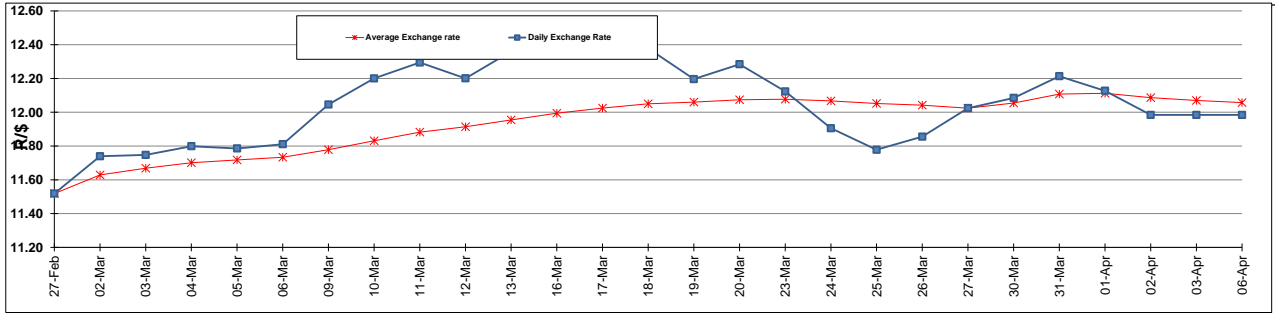
	PETROL 95 ULP	PETROL 93 ULP & LRP	DIESEL 0.05%	DIESEL 0.005%	ILL. PAR.
GAUTENG PUMP PRICE (SA c/l) AS FROM 03/04/2015	1,289.000	1,261.000	-	-	-
WHOLESALE PRICE (SA c/l) AS FROM 03/04/2015	-	-	1,122.790	1,129.190	743.828
SINGLE NATIONAL MAXIMUM RETAIL PRICE	-	-	-	-	957.000
BASIC FUEL PRICE - 06/04/2015 (SA c/l)	564.767	550.178	552.859	559.126	548.417
PRESS RELEASE CONTRIBUTION TO BFP 06/04/2015 - 06/04/2015 (SA c/l)	615.650	597.650	594.630	601.030	586.128
UNIT OVER/(UNDER) RECOVERY (SA c/l) - 06/04/2015	50.883	47.472	41.771	41.904	37.711
AVERAGE BASIC FUEL PRICE 27/03/2015 - 06/04/2015	582.242	565.999	563.576	569.808	559.873
AVERAGE UNIT OVER/(UNDER) RECOVERY 27/03/2015 - 06/04/2015	(0.621)	0.194	13.911	13.222	16.826

ANALYSIS MOVEMENT OF AVERAGE OVER/(UNDER) RECOVERY

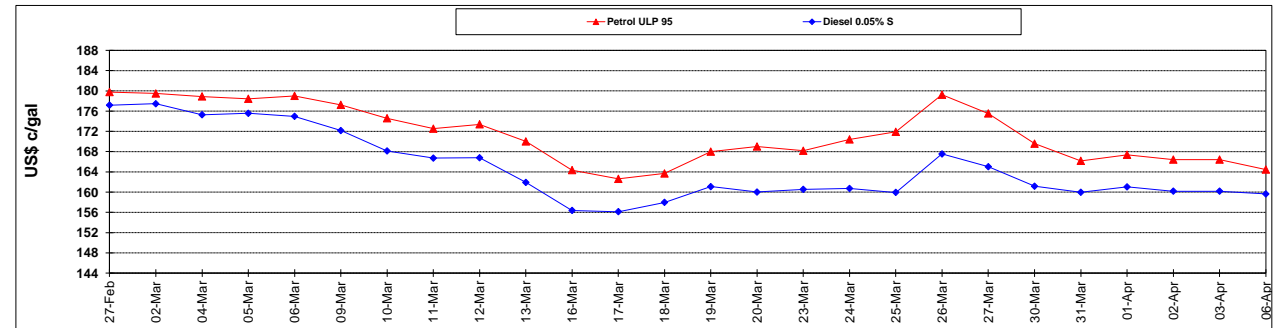
	PETROL 95	PETROL 93	DIESEL 0.05%	DIESEL 0.005%	ILL. PAR.
- MOVEMENT IN INTERNATIONAL PRODUCT PRICES	0.113	0.908	14.621	13.940	17.532
- MOVEMENT IN EXCHANGE RATE	(0.734)	(0.714)	(0.710)	(0.718)	(0.706)
AVERAGE UNIT OVER/(UNDER) RECOVERY 27/03/2015 - 06/04/2015	(0.621)	0.194	13.911	13.222	16.826

R/\$ EXCHANGE RATE - (R/\$ 11.9842 - 06/04/2015)

EXCHANGE RATE USED IN BASIC FUEL PRICE



INTERNATIONAL PRODUCT PRICES OF BASKET USED IN BASIC FUEL PRICE



BASIC FUEL PRICE IN SA CENTS PER LITRE

