

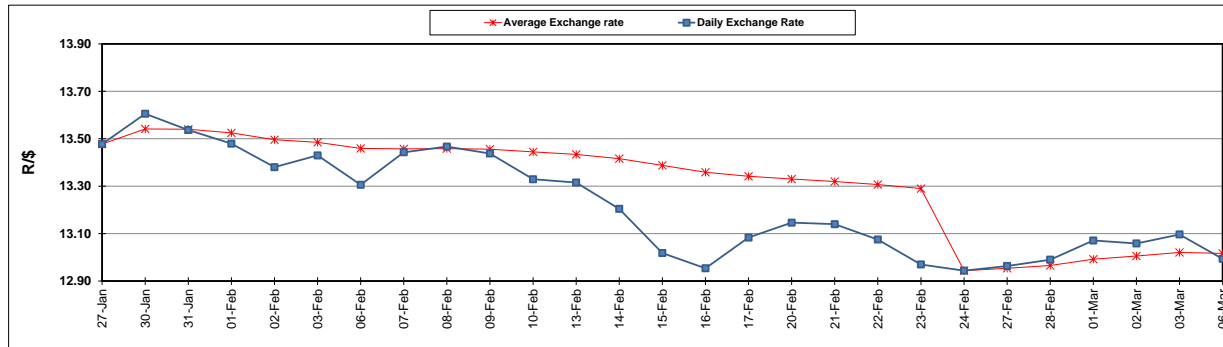
	PETROL 95 ULP	PETROL 93 ULP & LRP	DIESEL 0.05%	DIESEL 0.005%	ILL. PAR.
GAUTENG PUMP PRICE (SA c/l) AS FROM 01/03/2017	1 354.000	1 330.000	-	-	-
WHOLESALE PRICE (SA c/l) AS FROM 01/03/2017	-	-	1 160.830	1 163.230	750.588
SINGLE NATIONAL MAXIMUM RETAIL PRICE	-	-	-	-	966.000
BASIC FUEL PRICE - 06/03/2017 (SA c/l)	556.786	546.598	565.345	568.272	555.203
PRESS RELEASE CONTRIBUTION TO BFP 01/03/2017 - 06/03/2017 (SA c/l)	612.870	598.870	588.630	591.030	583.128
UNIT OVER/(UNDER) RECOVERY (SA c/l) - 06/03/2017	56.084	52.272	23.285	22.758	27.925
AVERAGE BASIC FUEL PRICE 24/02/2017 - 06/03/2017	572.227	561.145	572.317	575.402	564.188
AVERAGE UNIT OVER/(UNDER) RECOVERY 24/02/2017- 06/03/2017	44.071	41.153	17.170	16.485	22.369

### ANALYSIS MOVEMENT OF AVERAGE OVER/(UNDER) RECOVERY

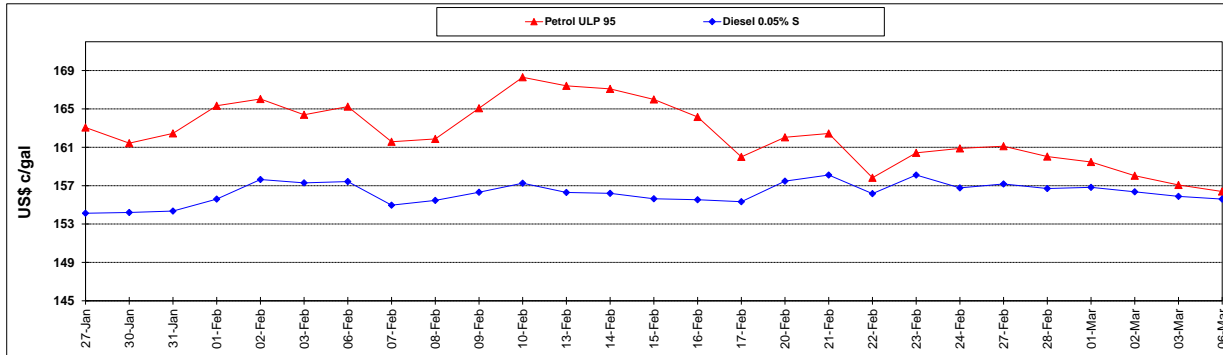
	PETROL 95	PETROL 93	DIESEL 0.05%	DIESEL 0.005%	ILL. PAR.
- MOVEMENT IN INTERNATIONAL PRODUCT PRICES	46.125	43.167	19.223	18.549	24.393
- MOVEMENT IN EXCHANGE RATE	(2.053)	(2.013)	(2.053)	(2.064)	(2.024)
AVERAGE UNIT OVER/(UNDER) RECOVERY 24/02/2017 - 06/03/2017	44.071	41.153	17.170	16.485	22.369

R/\$ EXCHANGE RATE - (R/\$ 12.9938 - 06/03/2017)

### EXCHANGE RATE USED IN BASIC FUEL PRICE



### INTERNATIONAL PRODUCT PRICES OF BASKET USED IN BASIC FUEL PRICE



### BASIC FUEL PRICE IN SA CENTS PER LITRE

