

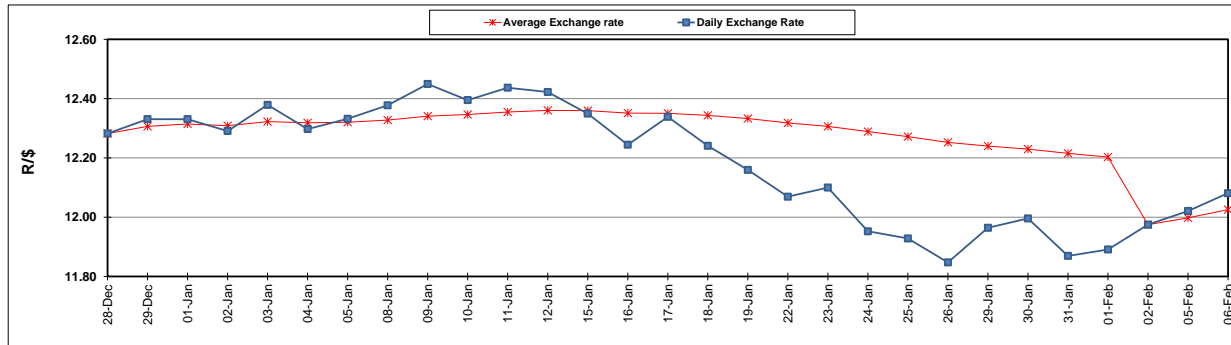
	PETROL 95 ULP	PETROL 93 ULP & LRP	DIESEL 0.05%	DIESEL 0.005%	ILL. PAR.
GAUTENG PUMP PRICE (SA c/l) AS FROM 07/02/2018	1 412.000	1 419.000	-	-	-
WHOLESALE PRICE (SA c/l) AS FROM 07/02/2018	-	-	1 256.630	1 259.030	818.388
SINGLE NATIONAL MAXIMUM RETAIL PRICE	-	-	-	-	1 056.000
BASIC FUEL PRICE - 06/02/2018 (SA c/l)	624.023	610.415	634.519	639.363	653.315
PRESS RELEASE CONTRIBUTION TO BFP 02/02/2018 - 06/02/2018 (SA c/l)	652.170	640.170	662.630	665.030	667.128
UNIT OVER/(UNDER) RECOVERY - 06/02/2018 (SA c/l)	28.147	29.755	28.111	25.667	13.813
AVERAGE BASIC FUEL PRICE 02/02/2018 - 06/02/2018	634.142	619.389	642.241	647.007	658.661
AVERAGE UNIT OVER/(UNDER) RECOVERY 02/02/2018 - 06/02/2018	18.028	20.781	20.389	18.023	8.467

### ANALYSIS MOVEMENT OF AVERAGE OVER/(UNDER) RECOVERY

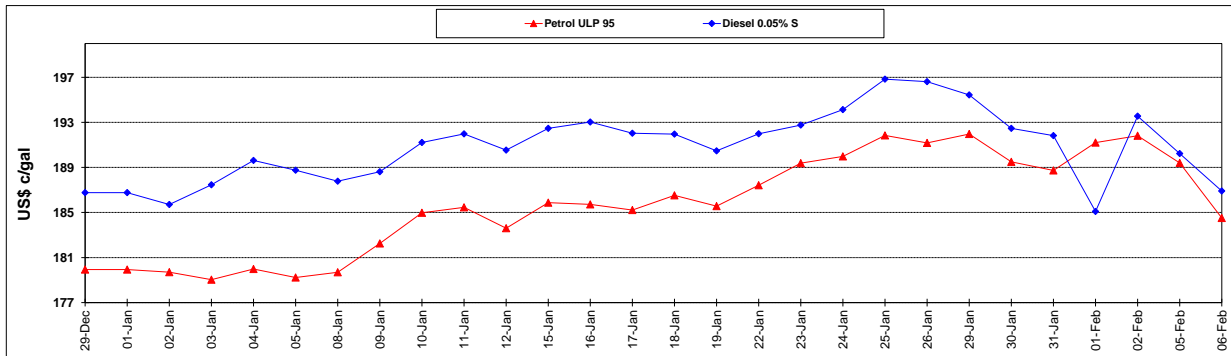
	PETROL 95	PETROL 93	DIESEL 0.05%	DIESEL 0.005%	ILL. PAR.
- MOVEMENT IN INTERNATIONAL PRODUCT PRICES	8.678	11.649	10.920	8.484	(1.244)
- MOVEMENT IN EXCHANGE RATE	9.350	9.132	9.469	9.539	9.711
AVERAGE UNIT OVER/(UNDER) RECOVERY 02/02/2018 - 06/02/2018	18.028	20.781	20.389	18.023	8.467

### R/\$ EXCHANGE RATE - (R/\$ 12.0810 - 06/02/2018)

#### EXCHANGE RATE USED IN BASIC FUEL PRICE



#### INTERNATIONAL PRODUCT PRICES OF BASKET USED IN BASIC FUEL PRICE



#### BASIC FUEL PRICE IN SA CENTS PER LITRE

