

## UPDATE OF THE BASIC FUEL PRICE

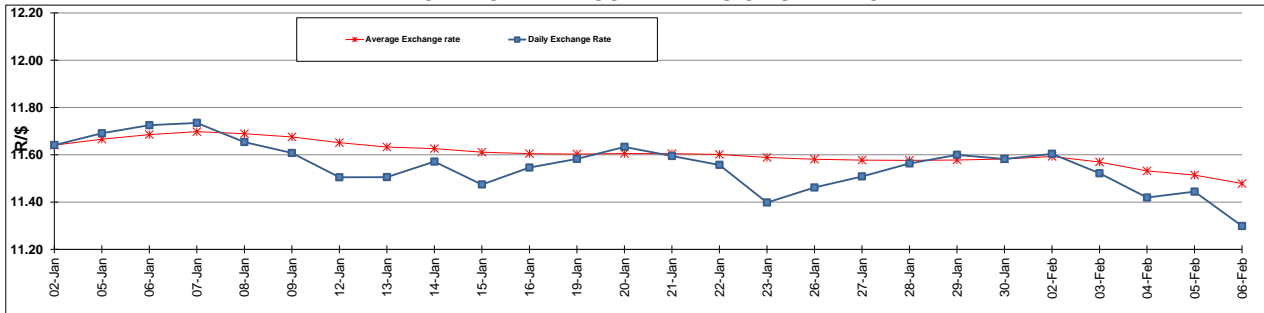
	PETROL 95 ULP	PETROL 93 ULP & LRP	DIESEL 0.05%	DIESEL 0.005%	ILL. PAR.
GAUTENG PUMP PRICE (SA c/l) AS FROM 04/02/2015	1,031.000	1,009.000	-	-	-
WHOLESALE PRICE (SA c/l) AS FROM 04/02/2015	-	-	926.090	930.490	645.928
SINGLE NATIONAL MAXIMUM RETAIL PRICE	-	-	-	-	833.000
BASIC FUEL PRICE - 06/02/2015 (SA c/l)	528.464	512.575	548.568	551.535	563.629
PRESS RELEASE CONTRIBUTION TO BFP 04/02/2015 - 06/02/2015 (SA c/l)	440.250	428.250	480.630	485.030	491.128
UNIT OVER/(UNDER) RECOVERY (SA c/l) - 06/02/2015	(88.214)	(84.325)	(67.938)	(66.505)	(72.501)
AVERAGE BASIC FUEL PRICE 30/01/2015 - 06/02/2015	514.797	498.533	530.673	534.452	547.574
AVERAGE UNIT OVER/(UNDER) RECOVERY 30/01/2015 - 06/02/2015	(28.047)	(23.783)	0.957	1.578	(5.446)

### ANALYSIS MOVEMENT OF AVERAGE OVER/(UNDER) RECOVERY

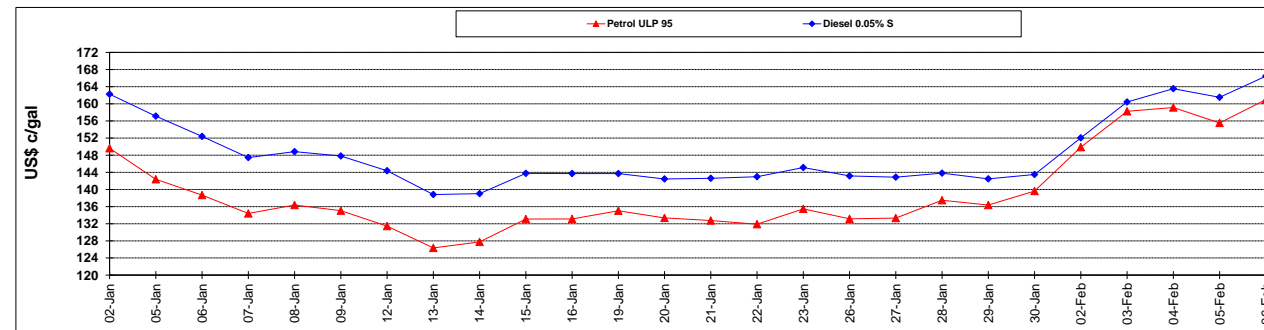
	PETROL 95	PETROL 93	DIESEL 0.05%	DIESEL 0.005%	ILL. PAR.
- MOVEMENT IN INTERNATIONAL PRODUCT PRICES	(32.501)	(28.096)	-3.634	-3.046	(10.183)
- MOVEMENT IN EXCHANGE RATE	4.454	4.313	4.591	4.624	4.737
AVERAGE UNIT OVER/(UNDER) RECOVERY 30/01/2015 - 06/02/2015	(28.047)	(23.783)	0.957	1.578	(5.446)

### R/\$ EXCHANGE RATE - (R/\$ 11.2987 - 06/02/2015)

#### EXCHANGE RATE USED IN BASIC FUEL PRICE



#### INTERNATIONAL PRODUCT PRICES OF BASKET USED IN BASIC FUEL PRICE



#### BASIC FUEL PRICE IN SA CENTS PER LITRE

