

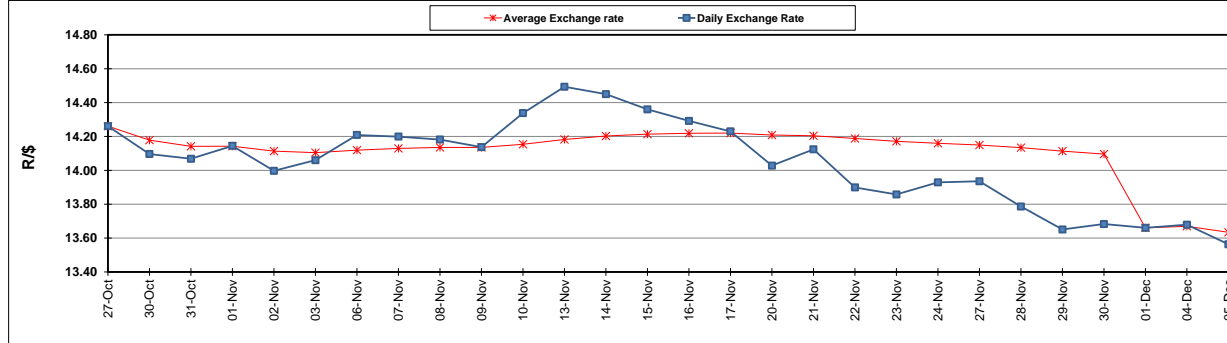
	PETROL 95 ULP	PETROL 93 ULP & LRP	DIESEL 0.05%	DIESEL 0.005%	ILL. PAR.
GAUTENG PUMP PRICE (SA c/l) AS FROM 06/12/2017	1 476.000	1 449.000	-	-	-
WHOLESALE PRICE (SA c/l) AS FROM 06/12/2017	-	-	1 295.630	1 302.030	865.388
SINGLE NATIONAL MAXIMUM RETAIL PRICE	-	-	-	-	1 119.000
BASIC FUEL PRICE - 05/12/2017 (SA c/l)	650.436	636.310	654.562	658.165	659.578
PRESS RELEASE CONTRIBUTION TO BFP 01/12/2017 - 05/12/2017 (SA c/l)	619.070	602.070	623.630	633.030	621.128
UNIT OVER/(UNDER) RECOVERY - 05/12/2017 (SA c/l)	(31.366)	(34.240)	(30.932)	(25.135)	(38.450)
AVERAGE BASIC FUEL PRICE 01/12/2017 - 05/12/2017	657.557	643.362	661.490	665.402	666.957
AVERAGE UNIT OVER/(UNDER) RECOVERY 01/12/2017 - 05/12/2017	(38.487)	(41.292)	(37.860)	(32.372)	(45.829)

ANALYSIS MOVEMENT OF AVERAGE OVER/(UNDER) RECOVERY

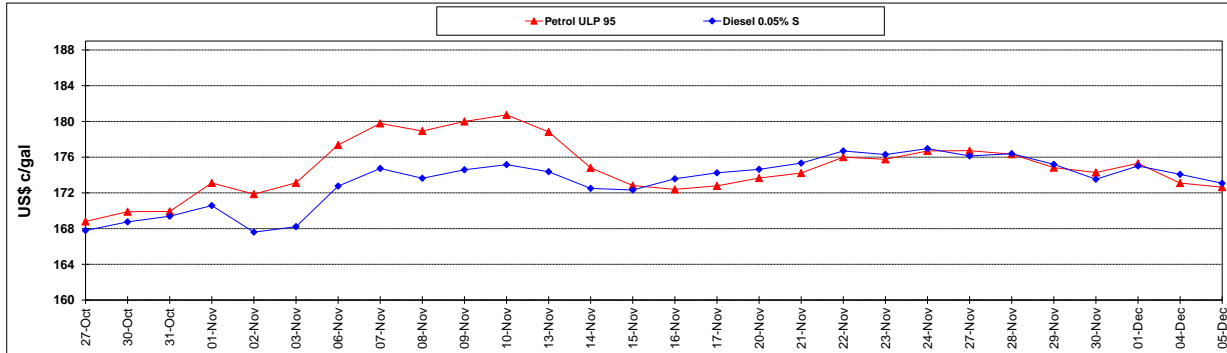
	PETROL 95	PETROL 93	DIESEL 0.05%	DIESEL 0.005%	ILL. PAR.
- MOVEMENT IN INTERNATIONAL PRODUCT PRICES	(60.773)	(63.097)	(60.280)	(54.924)	(68.434)
- MOVEMENT IN EXCHANGE RATE	22.286	21.805	22.420	22.552	22.605
AVERAGE UNIT OVER/(UNDER) RECOVERY 01/12/2017 - 05/12/2017	(38.487)	(41.292)	(37.860)	(32.372)	(45.829)

R/\$ EXCHANGE RATE - (R/\$ 13.5635 - 05/12/2017)

EXCHANGE RATE USED IN BASIC FUEL PRICE



INTERNATIONAL PRODUCT PRICES OF BASKET USED IN BASIC FUEL PRICE



BASIC FUEL PRICE IN SA CENTS PER LITRE

