

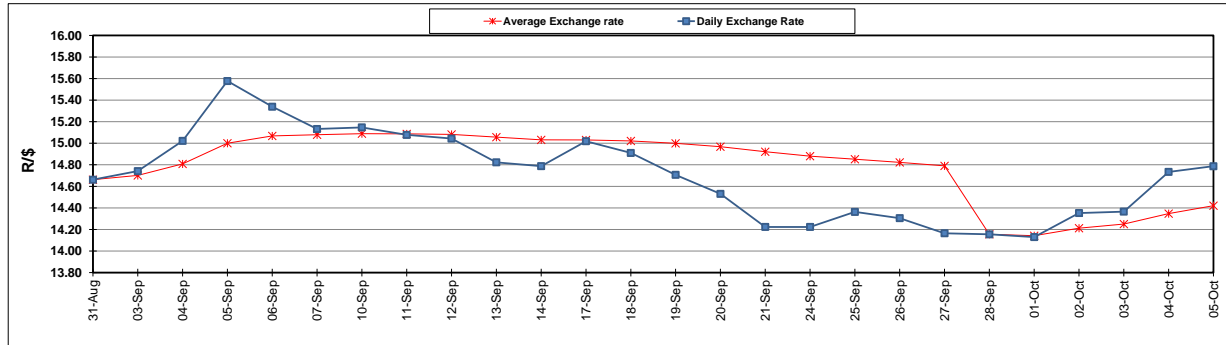
	PETROL 95 ULP	PETROL 93 ULP & LRP	DIESEL 0.05%	DIESEL 0.005%	ILL. PAR.
GAUTENG PUMP PRICE (SA c/l) AS FROM 03/10/2018	1 708.000	1 685.000	-	-	-
WHOLESALE PRICE (SA c/l) AS FROM 03/10/2018	-	-	1 564.830	1 569.230	1 057.088
SINGLE NATIONAL MAXIMUM RETAIL PRICE	-	-	-	-	1 372.000
BASIC FUEL PRICE - 05/10/2018 (SA c/l)	884.969	869.705	944.626	952.378	944.593
PRESS RELEASE CONTRIBUTION TO BFP 03/10/2018 - 05/10/2018 (SA c/l)	851.170	838.170	891.630	896.030	884.128
UNIT OVER/(UNDER) RECOVERY - 05/10/2018 (SA c/l)	(33.799)	(31.535)	(52.996)	(56.348)	(60.465)
AVERAGE BASIC FUEL PRICE 28/09/2018 - 05/10/2018	867.596	854.873	921.376	927.904	915.488
AVERAGE UNIT OVER/(UNDER) RECOVERY 28/09/2018 - 05/10/2018	(66.426)	(66.203)	(91.746)	(93.874)	(83.360)

ANALYSIS MOVEMENT OF AVERAGE OVER/(UNDER) RECOVERY

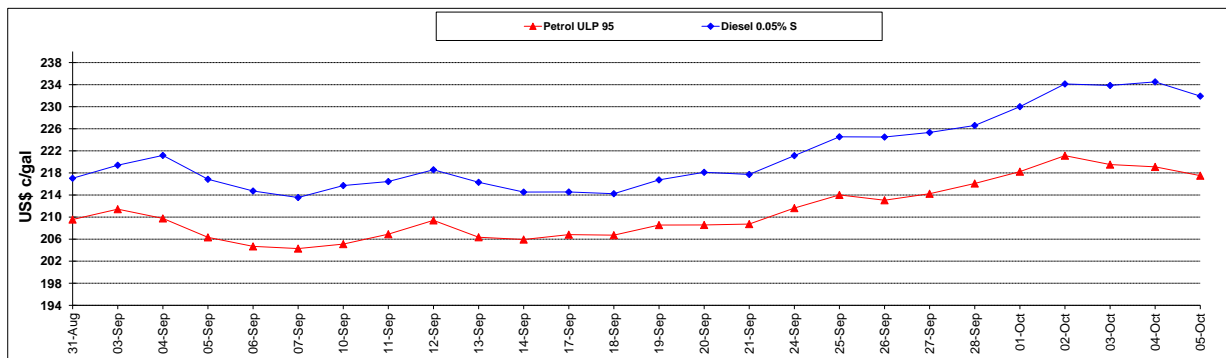
	PETROL 95	PETROL 93	DIESEL 0.05%	DIESEL 0.005%	ILL. PAR.
- MOVEMENT IN INTERNATIONAL PRODUCT PRICES	(88.644)	(88.096)	(115.342)	(117.637)	(106.805)
- MOVEMENT IN EXCHANGE RATE	22.218	21.893	23.596	23.763	23.445
AVERAGE UNIT OVER/(UNDER) RECOVERY 28/09/2018 - 05/10/2018	(66.426)	(66.203)	(91.746)	(93.874)	(83.360)

R/\$ EXCHANGE RATE - (R/\$14.7870 - 05/10/2018)

EXCHANGE RATE USED IN BASIC FUEL PRICE



INTERNATIONAL PRODUCT PRICES OF BASKET USED IN BASIC FUEL PRICE



BASIC FUEL PRICE IN SA CENTS PER LITRE

