

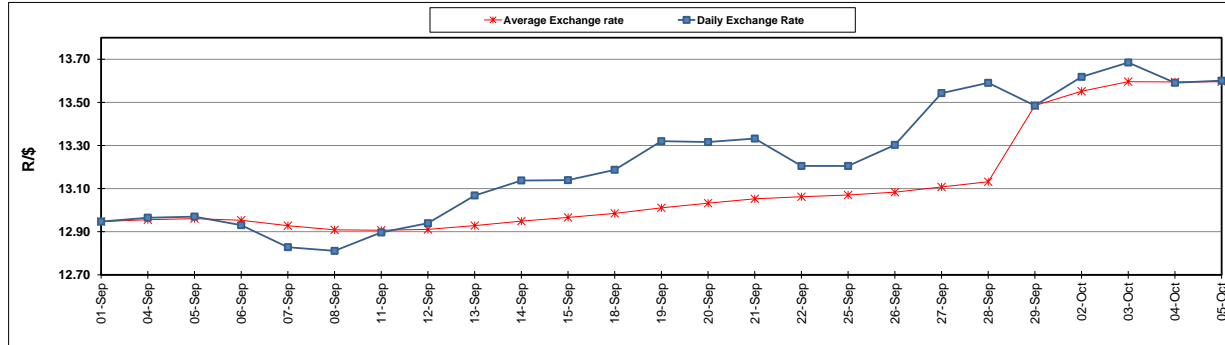
	PETROL 95 ULP	PETROL 93 ULP & LRP	DIESEL 0.05%	DIESEL 0.005%	ILL. PAR.
GAUTENG PUMP PRICE (SA c/l) AS FROM 04/10/2017	1 401.000	1 374.000	-	-	-
WHOLESALE PRICE (SA c/l) AS FROM 04/10/2017	-	-	1 212.330	1 217.730	771.088
SINGLE NATIONAL MAXIMUM RETAIL PRICE	-	-	-	-	992.000
BASIC FUEL PRICE - 05/10/2017 (SA c/l)	617.038	600.579	616.086	626.418	613.536
PRESS RELEASE CONTRIBUTION TO BFP 04/10/2017 - 05/10/2017 (SA c/l)	615.070	598.070	600.630	606.030	600.128
UNIT OVER/(UNDER) RECOVERY (SA c/l) - 05/10/2017	(1.968)	(2.509)	(15.456)	(20.388)	(13.408)
AVERAGE BASIC FUEL PRICE 29/09/2017 - 05/10/2017	608.232	592.077	615.562	625.875	612.544
AVERAGE UNIT OVER/(UNDER) RECOVERY 29/09/2017 - 05/10/2017	(10.562)	(9.007)	(40.132)	(45.045)	(35.816)

ANALYSIS MOVEMENT OF AVERAGE OVER/(UNDER) RECOVERY

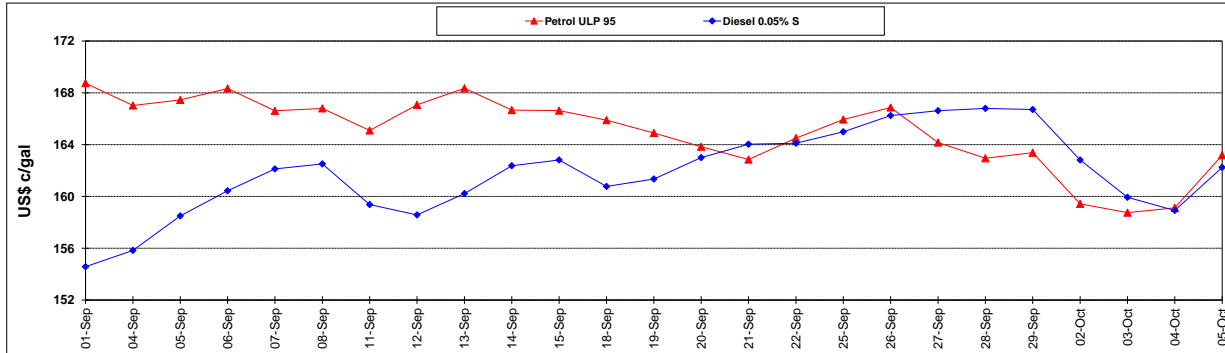
	PETROL 95	PETROL 93	DIESEL 0.05%	DIESEL 0.005%	ILL. PAR.
- MOVEMENT IN INTERNATIONAL PRODUCT PRICES	10.205	11.208	(19.115)	(23.676)	(14.902)
- MOVEMENT IN EXCHANGE RATE	(20.767)	(20.215)	(21.017)	(21.369)	(20.914)
AVERAGE UNIT OVER/(UNDER) RECOVERY 29/09/2017 - 05/10/2017	(10.562)	(9.007)	(40.132)	(45.045)	(35.816)

R/\$ EXCHANGE RATE - (R/\$ 13.6005 - 05/10/2017)

EXCHANGE RATE USED IN BASIC FUEL PRICE



INTERNATIONAL PRODUCT PRICES OF BASKET USED IN BASIC FUEL PRICE



BASIC FUEL PRICE IN SA CENTS PER LITRE

