

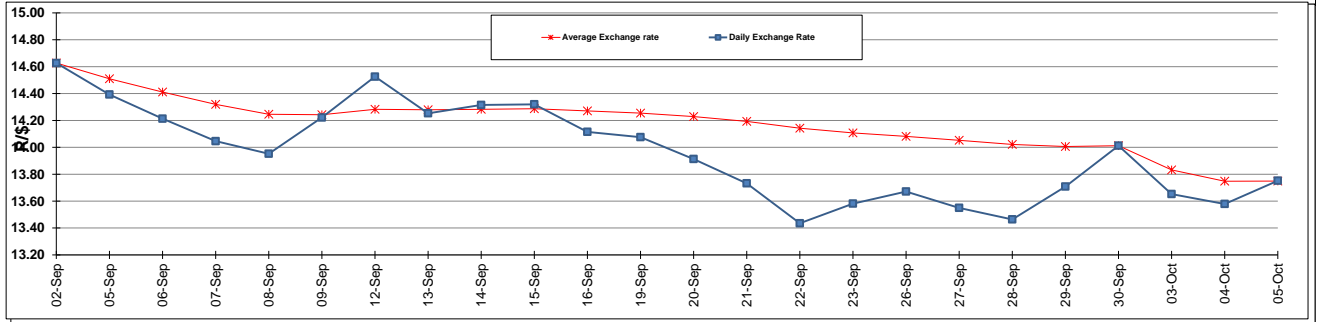
	PETROL 95 ULP	PETROL 93 ULP & LRP	DIESEL 0.05%	DIESEL 0.005%	ILL. PAR.
GAUTENG PUMP PRICE (SA c/l) AS FROM 05/10/2016	1 260.000	1 234.000	-	-	-
WHOLESALE PRICE (SA c/l) AS FROM 05/10/2016	-	-	1 071.870	1 075.270	669.628
SINGLE NATIONAL MAXIMUM RETAIL PRICE	-	-	-	-	858.000
BASIC FUEL PRICE - 05/10/2016 (SA c/l)	570.600	557.677	556.938	559.968	552.943
PRESS RELEASE CONTRIBUTION TO BFP 05/10/2016 - 05/10/2016 (SA c/l)	538.970	522.970	505.630	509.030	508.128
UNIT OVER/(UNDER) RECOVERY (SA c/l) - 05/10/2016	(31.630)	(34.707)	(51.308)	(50.938)	(44.815)
AVERAGE BASIC FUEL PRICE 30/09/2016 - 05/10/2016	558.400	544.420	543.507	546.640	540.421
AVERAGE UNIT OVER/(UNDER) RECOVERY 30/09/2016 - 05/10/2016	(51.680)	(54.450)	(55.127)	(54.860)	(48.793)

ANALYSIS MOVEMENT OF AVERAGE OVER/(UNDER) RECOVERY

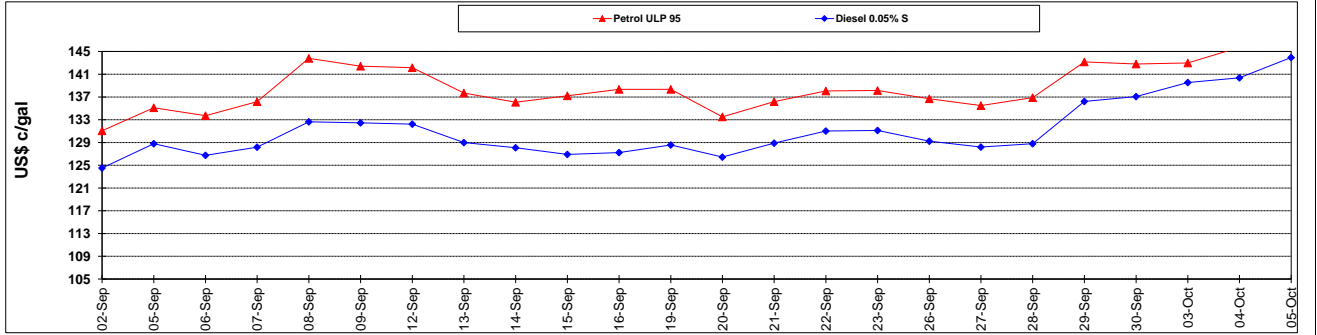
	PETROL 95	PETROL 93	DIESEL 0.05%	DIESEL 0.005%	ILL. PAR.
- MOVEMENT IN INTERNATIONAL PRODUCT PRICES	(62.106)	(64.615)	(65.275)	(65.066)	(58.883)
- MOVEMENT IN EXCHANGE RATE	10.426	10.165	10.148	10.206	10.090
AVERAGE UNIT OVER/(UNDER) RECOVERY 30/09/2016 - 05/10/2016	(51.680)	(54.450)	(55.127)	(54.860)	(48.793)

R/\$ EXCHANGE RATE - (R/\$ 13.7518 - 05/10/2016)

EXCHANGE RATE USED IN BASIC FUEL PRICE



INTERNATIONAL PRODUCT PRICES OF BASKET USED IN BASIC FUEL PRICE



BASIC FUEL PRICE IN SA CENTS PER LITRE

