

UPDATE OF THE BASIC FUEL PRICE

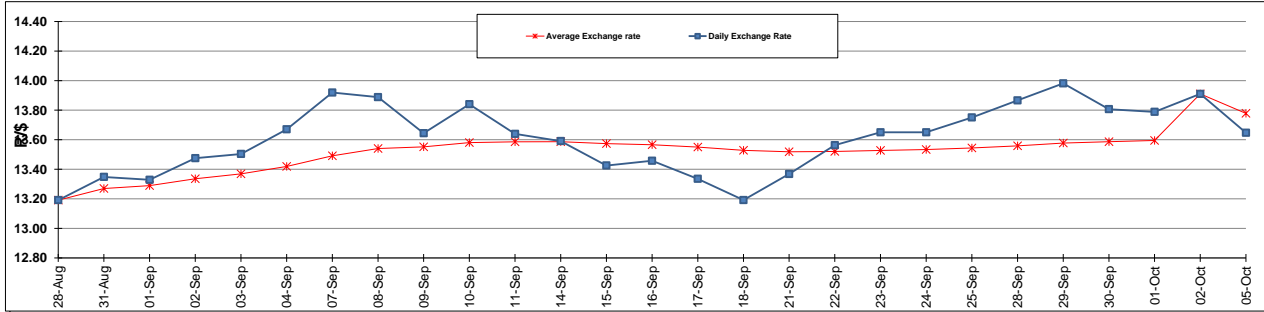
	PETROL 95 ULP	PETROL 93 ULP & LRP	DIESEL 0.05%	DIESEL 0.005%	ILL. PAR.
GAUTENG PUMP PRICE (SA c/l) AS FROM 07/10/2015	1,261.000	1,230.000	-	-	-
WHOLESALE PRICE (SA c/l) AS FROM 07/10/2015	-	-	1,093.970	1,100.370	711.828
SINGLE NATIONAL MAXIMUM RETAIL PRICE	-	-	-	-	914.000
BASIC FUEL PRICE - 02/10/2015 (SA c/l)	588.936	572.827	565.628	571.167	557.821
PRESS RELEASE CONTRIBUTION TO BFP 02/10/2015 - 05/10/2015 (SA c/l)	578.870	563.870	512.630	521.030	504.128
UNIT OVER/(UNDER) RECOVERY (SA c/l) - 05/10/2015	(10.066)	(8.957)	(52.998)	(50.137)	(53.693)
AVERAGE BASIC FUEL PRICE 02/10/2015 - 05/10/2015	587.077	569.676	562.855	568.441	555.499
AVERAGE UNIT OVER/(UNDER) RECOVERY 02/10/2015 - 05/10/2015	(8.207)	(5.806)	(50.225)	(47.411)	(51.371)

ANALYSIS MOVEMENT OF AVERAGE OVER/(UNDER) RECOVERY

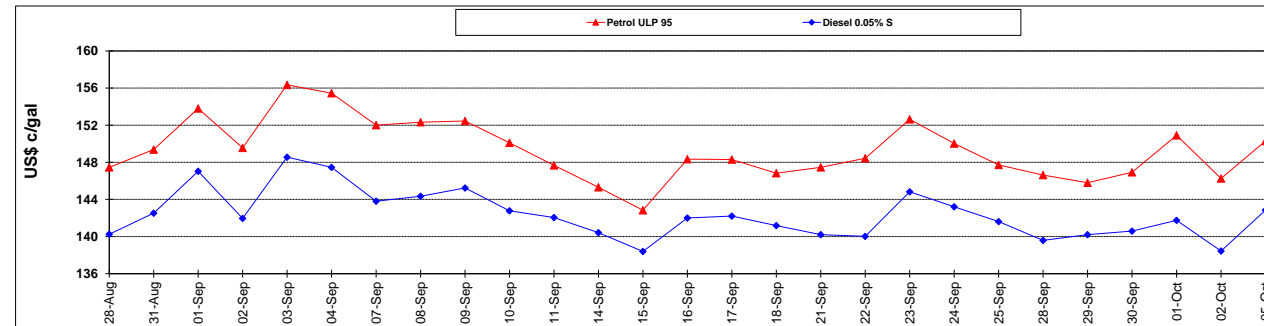
	PETROL 95	PETROL 93	DIESEL 0.05%	DIESEL 0.005%	ILL. PAR.
- MOVEMENT IN INTERNATIONAL PRODUCT PRICES	(0.376)	1.793	(42.717)	(39.828)	(43.961)
- MOVEMENT IN EXCHANGE RATE	(7.831)	(7.599)	(7.508)	(7.583)	(7.410)
AVERAGE UNIT OVER/(UNDER) RECOVERY 02/10/2015 - 05/10/2015	(8.207)	(5.806)	(50.225)	(47.411)	(51.371)

R/\$ EXCHANGE RATE - (R/\$ 13.6471- 05/10/2015)

EXCHANGE RATE USED IN BASIC FUEL PRICE



INTERNATIONAL PRODUCT PRICES OF BASKET USED IN BASIC FUEL PRICE



BASIC FUEL PRICE IN SA CENTS PER LITRE

