

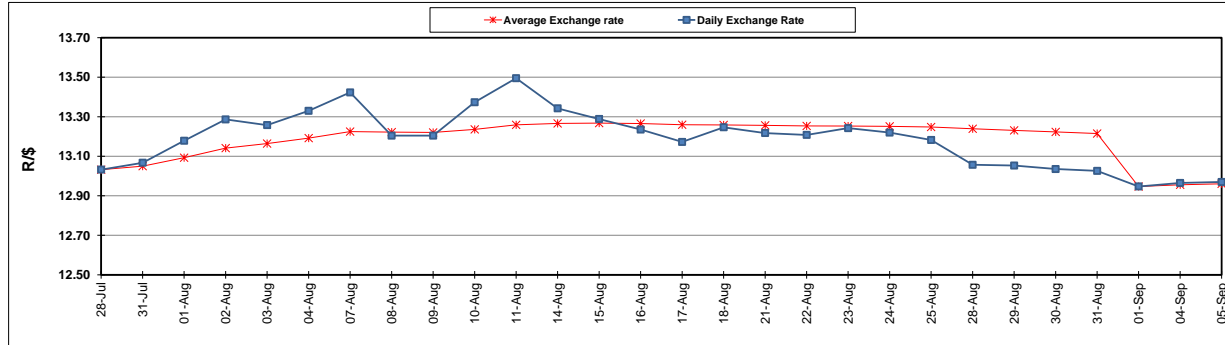
	PETROL 95 ULP	PETROL 93 ULP & LRP	DIESEL 0.05%	DIESEL 0.005%	ILL. PAR.
GAUTENG PUMP PRICE (SA c/l) AS FROM 06/09/2017	1 372.000	1 349.000	-	-	-
WHOLESALE PRICE (SA c/l) AS FROM 06/09/2017	-	-	1 170.330	1 175.730	732.088
SINGLE NATIONAL MAXIMUM RETAIL PRICE	-	-	-	-	941.000
BASIC FUEL PRICE - 05/09/2017 (SA c/l)	604.163	588.035	575.918	581.590	573.015
PRESS RELEASE CONTRIBUTION TO BFP 01/09/2017 - 05/09/2017 (SA c/l)	523.670	510.670	514.630	520.030	512.128
UNIT OVER/(UNDER) RECOVERY (SA c/l) - 05/09/2017	(80.493)	(77.365)	(61.288)	(61.560)	(60.887)
AVERAGE BASIC FUEL PRICE 01/09/2017 - 05/09/2017	604.727	589.739	567.815	573.252	569.803
AVERAGE UNIT OVER/(UNDER) RECOVERY 01/09/2017 - 05/09/2017	(81.057)	(79.069)	(53.185)	(53.222)	(57.675)

### ANALYSIS MOVEMENT OF AVERAGE OVER/(UNDER) RECOVERY

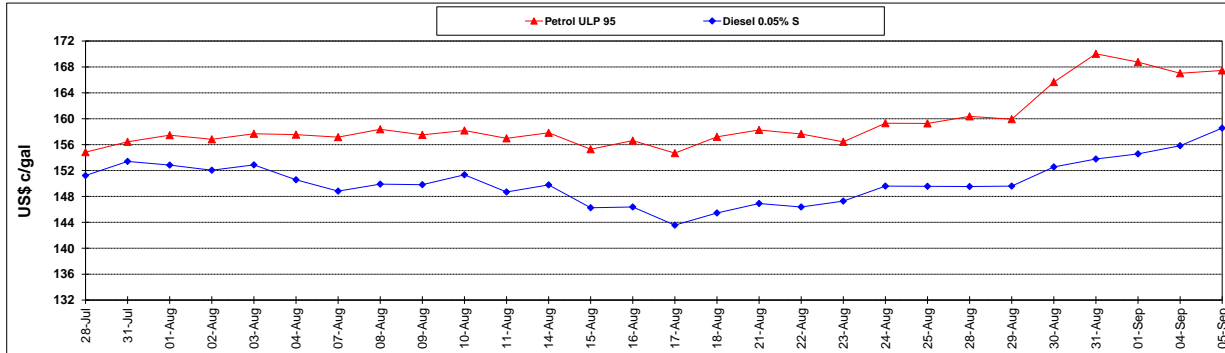
	PETROL 95	PETROL 93	DIESEL 0.05%	DIESEL 0.005%	ILL. PAR.
- MOVEMENT IN INTERNATIONAL PRODUCT PRICES	(92.932)	(90.649)	(64.335)	(64.479)	(68.864)
- MOVEMENT IN EXCHANGE RATE	11.875	11.580	11.150	11.257	11.189
AVERAGE UNIT OVER/(UNDER) RECOVERY 01/09/2017 - 05/09/2017	(81.057)	(79.069)	(53.185)	(53.222)	(57.675)

R/\$ EXCHANGE RATE - (R/\$ 12.9700 - 05/09/2017)

### EXCHANGE RATE USED IN BASIC FUEL PRICE



### INTERNATIONAL PRODUCT PRICES OF BASKET USED IN BASIC FUEL PRICE



### BASIC FUEL PRICE IN SA CENTS PER LITRE

