

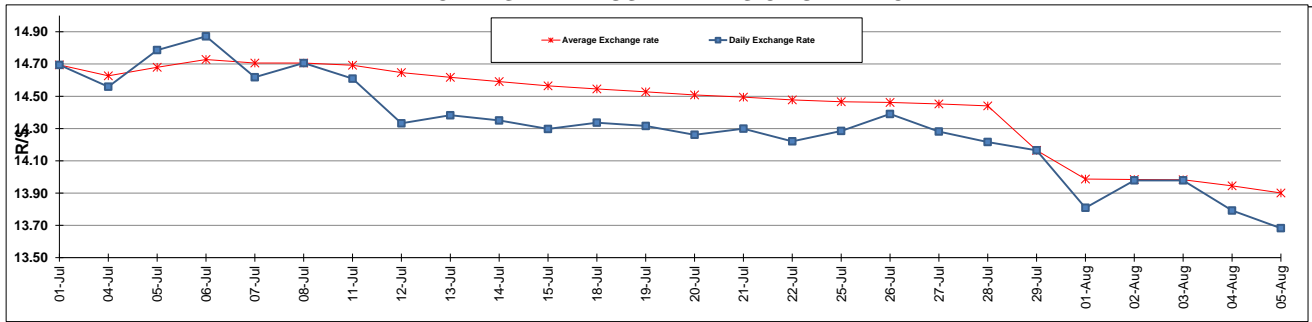
	PETROL 95 ULP	PETROL 93 ULP & LRP	DIESEL 0.05%	DIESEL 0.005%	ILL. PAR.
GAUTENG PUMP PRICE (SA c/l) AS FROM 03/08/2016	1,235.000	1,208.000	-	-	-
WHOLESALE PRICE (SA c/l) AS FROM 03/08/2016	-	-	1,096.870	1,101.270	694.628
SINGLE NATIONAL MAXIMUM RETAIL PRICE	-	-	-	-	891.000
BASIC FUEL PRICE - 05/08/2016 (SA c/l)	475.047	461.845	454.249	457.538	455.107
PRESS RELEASE CONTRIBUTION TO BFP 03/08/2116 - 05/08/2016 (SA c/l)	513.970	496.970	530.630	535.030	533.128
UNIT OVER/(UNDER) RECOVERY (SA c/l) - 05/08/2016	38.923	35.125	76.381	77.492	78.021
AVERAGE BASIC FUEL PRICE 29/07/2116 - 05/08/2016	467.555	453.674	451.955	455.291	455.279
AVERAGE UNIT OVER/(UNDER) RECOVERY 29/07/2116 - 05/08/2016	95.915	92.796	115.675	116.239	110.849

ANALYSIS MOVEMENT OF AVERAGE OVER/(UNDER) RECOVERY

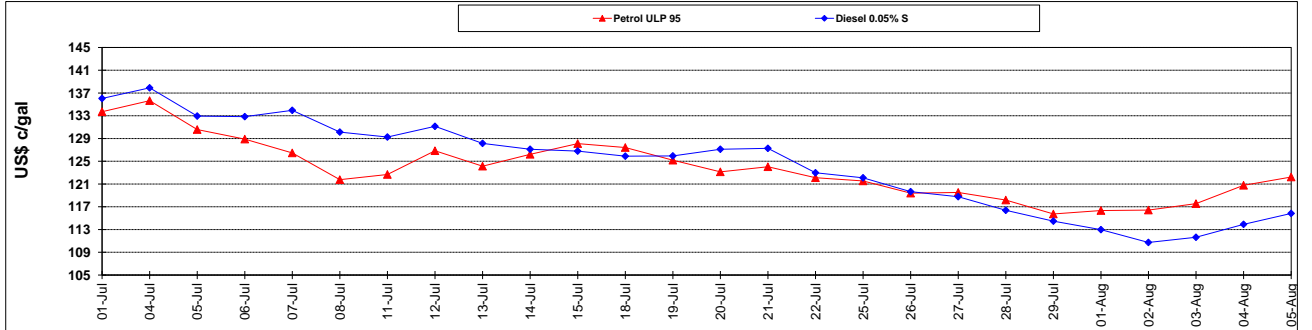
	PETROL 95	PETROL 93	DIESEL 0.05%	DIESEL 0.005%	ILL. PAR.
- MOVEMENT IN INTERNATIONAL PRODUCT PRICES	77.759	75.179	98.125	98.559	93.170
- MOVEMENT IN EXCHANGE RATE	18.156	17.617	17.550	17.680	17.679
AVERAGE UNIT OVER/(UNDER) RECOVERY 29/07/2016 - 05/08/2016	95.915	92.796	115.675	116.239	110.849

R/\$ EXCHANGE RATE - (R/\$ 13.6823 - 05/08/2016)

EXCHANGE RATE USED IN BASIC FUEL PRICE



INTERNATIONAL PRODUCT PRICES OF BASKET USED IN BASIC FUEL PRICE



BASIC FUEL PRICE IN SA CENTS PER LITRE

