

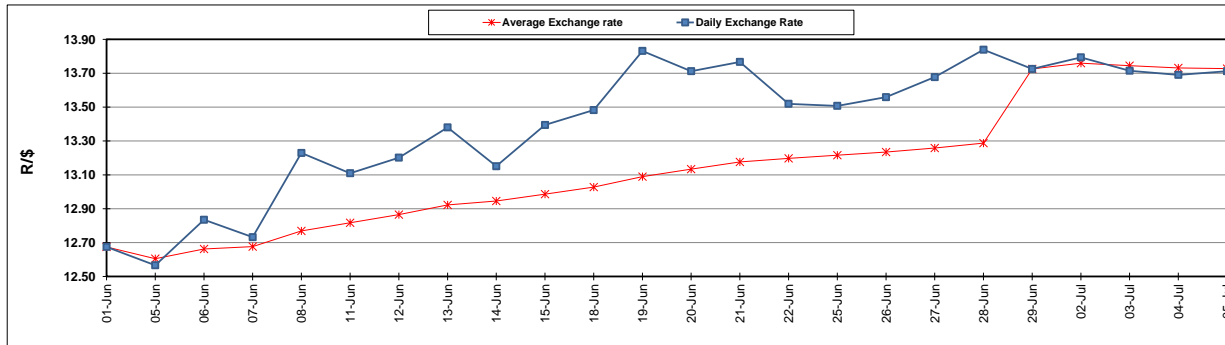
	PETROL 95 ULP	PETROL 93 ULP & LRP	DIESEL 0.05%	DIESEL 0.005%	ILL. PAR.
GAUTENG PUMP PRICE (SA c/l) AS FROM 04/07/2018	1 602.000	1 581.000	-	-	-
WHOLESALE PRICE (SA c/l) AS FROM 04/07/2018	-	-	1 444.830	1 449.230	949.088
SINGLE NATIONAL MAXIMUM RETAIL PRICE	-	-	-	-	1 228.000
BASIC FUEL PRICE - 05/07/2018 (SA c/l)	771.964	760.248	790.009	795.148	805.935
PRESS RELEASE CONTRIBUTION TO BFP 05/07/2018 - 05/07/2018 (SA c/l)	750.070	739.070	771.630	776.030	776.128
UNIT OVER/(UNDER) RECOVERY - 05/07/2018 (SA c/l)	(21.894)	(21.178)	(18.379)	(19.118)	(29.807)
AVERAGE BASIC FUEL PRICE 29/06/2018 - 05/07/2018	772.783	761.703	788.522	793.388	802.056
AVERAGE UNIT OVER/(UNDER) RECOVERY 29/06/2018 - 05/07/2018	(36.513)	(38.833)	(32.492)	(31.758)	(39.128)

ANALYSIS MOVEMENT OF AVERAGE OVER/(UNDER) RECOVERY

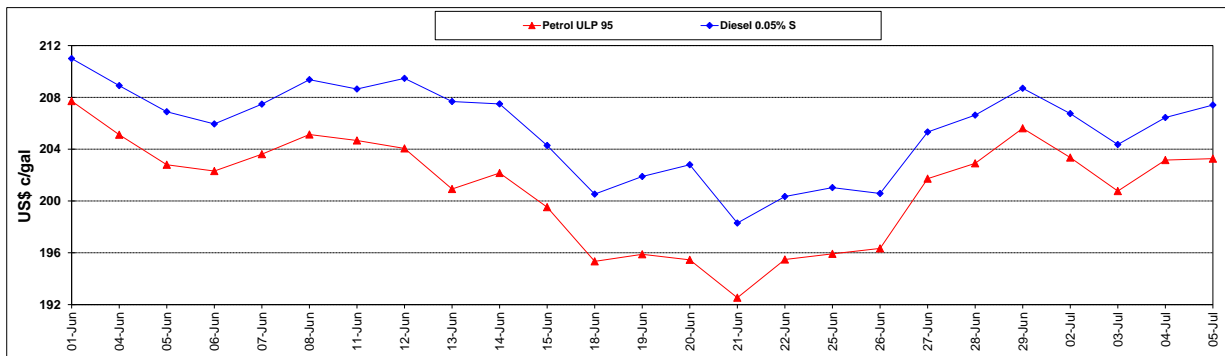
	PETROL 95	PETROL 93	DIESEL 0.05%	DIESEL 0.005%	ILL. PAR.
- MOVEMENT IN INTERNATIONAL PRODUCT PRICES	(11.743)	(14.418)	(7.217)	(6.327)	(13.419)
- MOVEMENT IN EXCHANGE RATE	(24.770)	(24.415)	(25.275)	(25.431)	(25.709)
AVERAGE UNIT OVER/(UNDER) RECOVERY 29/06/2018 - 05/07/2018	(36.513)	(38.833)	(32.492)	(31.758)	(39.128)

R/\$ EXCHANGE RATE - (R/\$13.7120 - 05/07/2018)

EXCHANGE RATE USED IN BASIC FUEL PRICE



INTERNATIONAL PRODUCT PRICES OF BASKET USED IN BASIC FUEL PRICE



BASIC FUEL PRICE IN SA CENTS PER LITRE

