

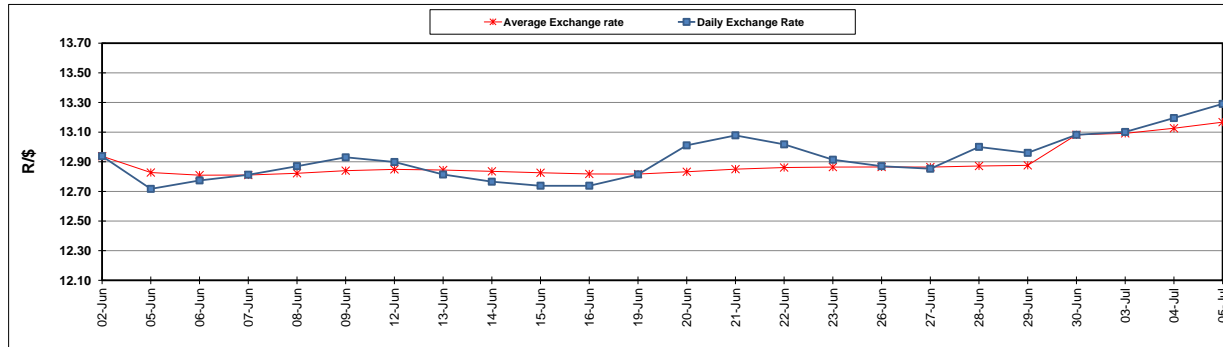
	PETROL 95 ULP	PETROL 93 ULP & LRP	DIESEL 0.05%	DIESEL 0.005%	ILL. PAR.
GAUTENG PUMP PRICE (SA c/l) AS FROM 05/07/2017	1 286.000	1 263.000	-	-	-
WHOLESALE PRICE (SA c/l) AS FROM 05/07/2017	-	-	1 097.330	1 101.730	657.088
SINGLE NATIONAL MAXIMUM RETAIL PRICE	-	-	-	-	841.000
BASIC FUEL PRICE - 05/07/2017 (SA c/l)	532.920	517.183	530.369	535.875	527.960
PRESS RELEASE CONTRIBUTION TO BFP 05/07/2017 - 05/07/2017 (SA c/l)	504.670	491.670	485.630	490.030	486.128
UNIT OVER/(UNDER) RECOVERY (SA c/l) - 05/07/2017	(28.250)	(25.513)	(44.739)	(45.845)	(41.832)
AVERAGE BASIC FUEL PRICE 30/06/2017 - 05/07/2017	530.101	513.854	522.616	527.872	521.568
AVERAGE UNIT OVER/(UNDER) RECOVERY 30/06/2017- 05/07/2017	25.570	29.566	8.015	7.159	7.311

ANALYSIS MOVEMENT OF AVERAGE OVER/(UNDER) RECOVERY

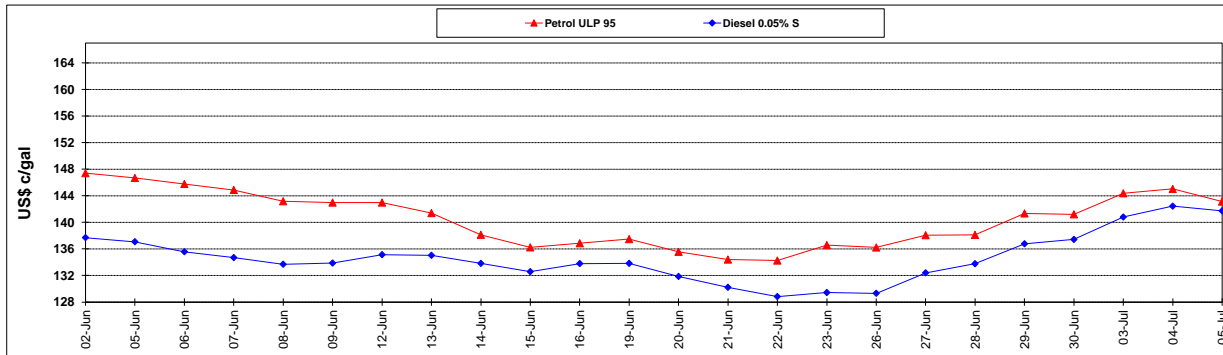
	PETROL 95	PETROL 93	DIESEL 0.05%	DIESEL 0.005%	ILL. PAR.
- MOVEMENT IN INTERNATIONAL PRODUCT PRICES	37.305	40.942	19.584	18.844	18.857
- MOVEMENT IN EXCHANGE RATE	(11.736)	(11.376)	(11.570)	(11.686)	(11.547)
AVERAGE UNIT OVER/(UNDER) RECOVERY 30/06/2017 - 05/07/2017	25.570	29.566	8.015	7.159	7.311

R/\$ EXCHANGE RATE - (R/\$ 13.2905 - 05/07/2017)

EXCHANGE RATE USED IN BASIC FUEL PRICE



INTERNATIONAL PRODUCT PRICES OF BASKET USED IN BASIC FUEL PRICE



BASIC FUEL PRICE IN SA CENTS PER LITRE

