

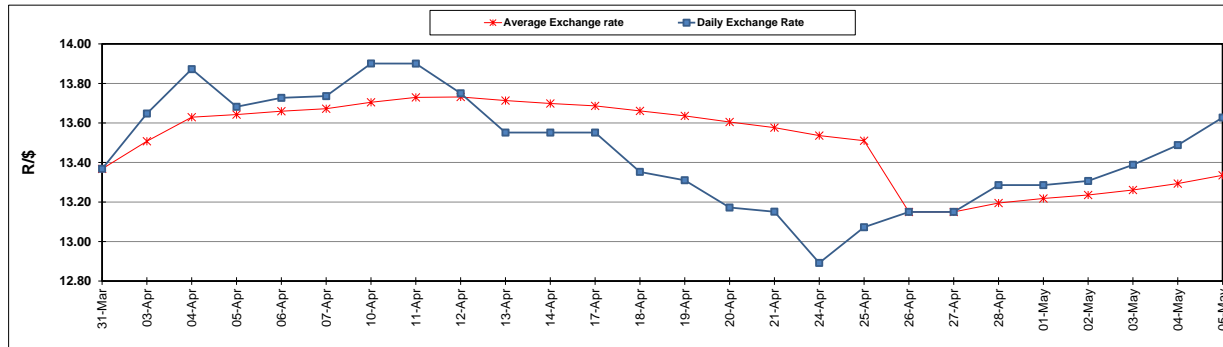
	PETROL 95 ULP	PETROL 93 ULP & LRP	DIESEL 0.05%	DIESEL 0.005%	ILL. PAR.
GAUTENG PUMP PRICE (SA c/l) AS FROM 03/05/2017	1 379.000	1 357.000	-	-	-
WHOLESALE PRICE (SA c/l) AS FROM 03/05/2017	-	-	1 180.330	1 184.730	736.088
SINGLE NATIONAL MAXIMUM RETAIL PRICE	-	-	-	-	947.000
BASIC FUEL PRICE - 05/05/2017 (SA c/l)	551.412	535.371	529.629	532.865	525.424
PRESS RELEASE CONTRIBUTION TO BFP 03/05/2017 - 05/05/2017 (SA c/l)	597.670	585.670	568.630	573.030	565.128
UNIT OVER/(UNDER) RECOVERY (SA c/l) - 05/05/2017	46.258	50.299	39.001	40.165	39.704
AVERAGE BASIC FUEL PRICE 26/04/2017 - 05/05/2017	558.827	542.260	537.119	541.031	531.011
AVERAGE UNIT OVER/(UNDER) RECOVERY 26/04/2017 - 05/05/2017	8.218	12.786	12.761	11.999	12.868

ANALYSIS MOVEMENT OF AVERAGE OVER/(UNDER) RECOVERY

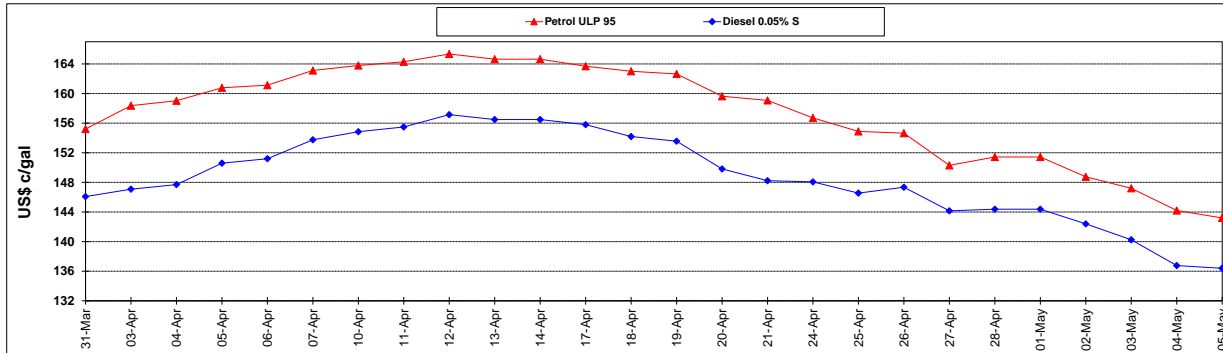
	PETROL 95	PETROL 93	DIESEL 0.05%	DIESEL 0.005%	ILL. PAR.
- MOVEMENT IN INTERNATIONAL PRODUCT PRICES	0.868	5.653	5.696	4.883	5.882
- MOVEMENT IN EXCHANGE RATE	7.350	7.132	7.065	7.116	6.985
AVERAGE UNIT OVER/(UNDER) RECOVERY 26/04/2017 - 05/05/2017	8.218	12.786	12.761	11.999	12.868

R/\$ EXCHANGE RATE - (R/\$ 13.6273 - 05/05/2017)

EXCHANGE RATE USED IN BASIC FUEL PRICE



INTERNATIONAL PRODUCT PRICES OF BASKET USED IN BASIC FUEL PRICE



BASIC FUEL PRICE IN SA CENTS PER LITRE

