

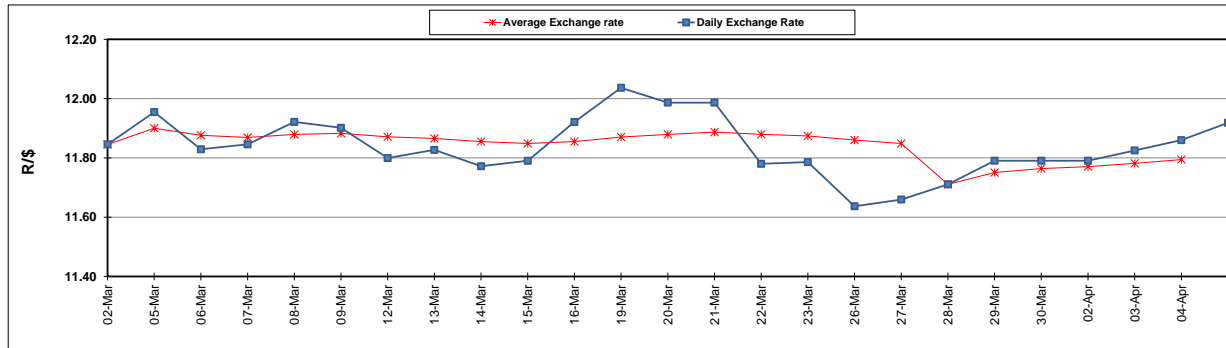
	PETROL 95 ULP	PETROL 93 ULP & LRP	DIESEL 0.05%	DIESEL 0.005%	ILL. PAR.
GAUTENG PUMP PRICE (SA c/l) AS FROM 07/03/2018	1 448.000	1 423.000	-	-	-
WHOLESALE PRICE (SA c/l) AS FROM 07/03/2018	-	-	1 274.830	1 280.230	793.088
SINGLE NATIONAL MAXIMUM RETAIL PRICE	-	-	-	-	1 026.000
BASIC FUEL PRICE - 05/04/2018 (SA c/l)	626.754	611.068	637.459	642.721	650.452
PRESS RELEASE CONTRIBUTION TO BFP 04/04/2018 - 05/04/2018 (SA c/l)	596.070	581.070	601.630	607.030	620.128
UNIT OVER/(UNDER) RECOVERY - 05/04/2018 (SA c/l)	(30.684)	(29.998)	(35.829)	(35.691)	(30.324)
AVERAGE BASIC FUEL PRICE 28/03/2018 - 05/04/2018	623.586	609.338	636.493	641.745	645.635
AVERAGE UNIT OVER/(UNDER) RECOVERY 28/03/2018 - 05/04/2018	(34.588)	(33.196)	(37.006)	(36.857)	(21.935)

ANALYSIS MOVEMENT OF AVERAGE OVER/(UNDER) RECOVERY

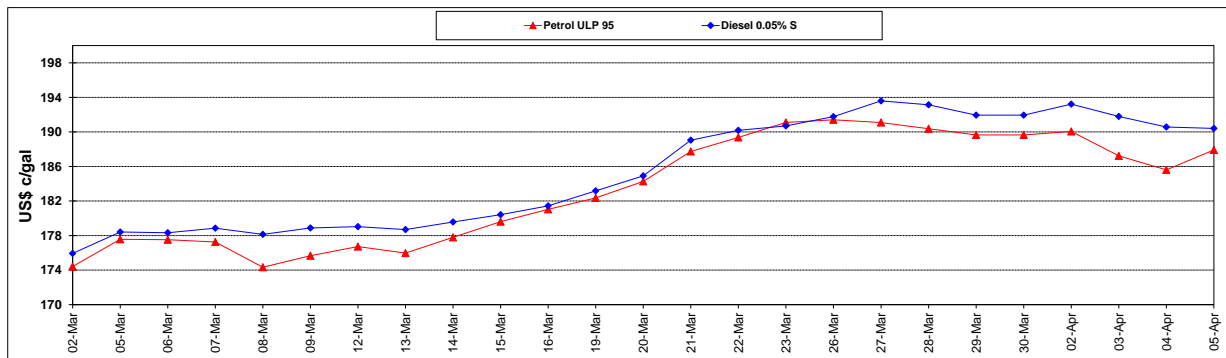
	PETROL 95	PETROL 93	DIESEL 0.05%	DIESEL 0.005%	ILL. PAR.
- MOVEMENT IN INTERNATIONAL PRODUCT PRICES	(36.519)	(35.085)	(38.978)	(38.846)	(23.936)
- MOVEMENT IN EXCHANGE RATE	1.932	1.888	1.972	1.988	2.000
AVERAGE UNIT OVER/(UNDER) RECOVERY 28/03/2018 - 05/04/2018	(34.588)	(33.196)	(37.006)	(36.857)	(21.935)

R/\$ EXCHANGE RATE - (R/\$11.9185 - 05/04/2018)

EXCHANGE RATE USED IN BASIC FUEL PRICE



INTERNATIONAL PRODUCT PRICES OF BASKET USED IN BASIC FUEL PRICE



BASIC FUEL PRICE IN SA CENTS PER LITRE

