

## UPDATE OF THE BASIC FUEL PRICE

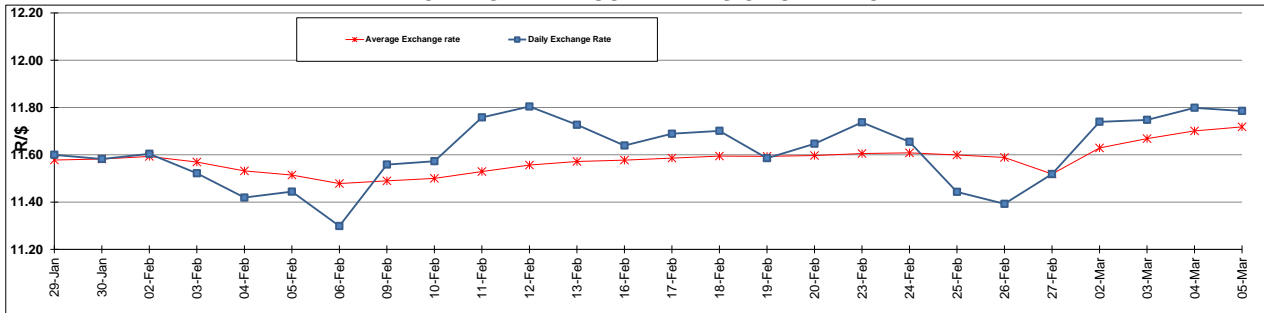
|  | PETROL 95<br>ULP | PETROL 93<br>ULP & LRP | DIESEL<br>0.05% | DIESEL<br>0.005% | ILL. PAR. |
|--|------------------|------------------------|-----------------|------------------|-----------|
| GAUTENG PUMP PRICE (SA c/l) AS FROM 04/03/2015                     | 1,127.000        | 1,105.000              | -               | -                | -         |
| WHOLESALE PRICE (SA c/l) AS FROM 04/03/2015                        | -                | -                      | 1,000.090       | 1,004.490        | 718.928   |
| SINGLE NATIONAL MAXIMUM RETAIL PRICE                               | -                | -                      | -               | -                | 931.000   |
| BASIC FUEL PRICE - 05/03/2015 (SA c/l)                             | 605.506          | 588.481                | 600.368         | 605.189          | 589.183   |
| PRESS RELEASE CONTRIBUTION TO BFP 04/03/2015 - 05/03/2015 (SA c/l) | 536.250          | 524.250                | 554.630         | 559.030          | 564.128   |
| UNIT OVER/(UNDER) RECOVERY (SA c/l) - 05/03/2015                   | (69.256)         | (64.231)               | (45.738)        | (46.159)         | (25.055)  |
| AVERAGE BASIC FUEL PRICE 27/02/2015 - 05/03/2015                   | 604.614          | 588.092                | 599.212         | 604.150          | 590.317   |
| AVERAGE UNIT OVER/(UNDER) RECOVERY 27/02/2015 - 05/03/2015         | (125.964)        | (121.442)              | (88.982)        | (89.520)         | (69.989)  |

### ANALYSIS MOVEMENT OF AVERAGE OVER/(UNDER) RECOVERY

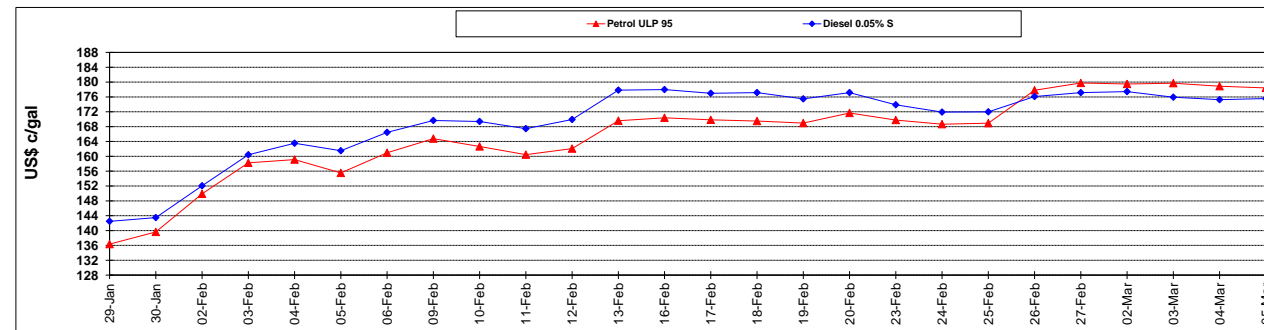
|  | PETROL 95 | PETROL 93 | DIESEL 0.05% | DIESEL 0.005% | ILL. PAR. |
|--|-----------|-----------|--------------|---------------|-----------|
| - MOVEMENT IN INTERNATIONAL PRODUCT PRICES                 | (119.308) | (114.968) | (82.385)     | (82.869)      | (63.490)  |
| - MOVEMENT IN EXCHANGE RATE                                | (6.656)   | (6.474)   | (6.597)      | (6.651)       | (6.499)   |
| AVERAGE UNIT OVER/(UNDER) RECOVERY 27/02/2015 - 05/03/2015 | (125.964) | (121.442) | (88.982)     | (89.520)      | (69.989)  |

**R/\$ EXCHANGE RATE - (R/\$ 11.7856 - 05/03/2015)**

### EXCHANGE RATE USED IN BASIC FUEL PRICE



### INTERNATIONAL PRODUCT PRICES OF BASKET USED IN BASIC FUEL PRICE



### BASIC FUEL PRICE IN SA CENTS PER LITRE

