

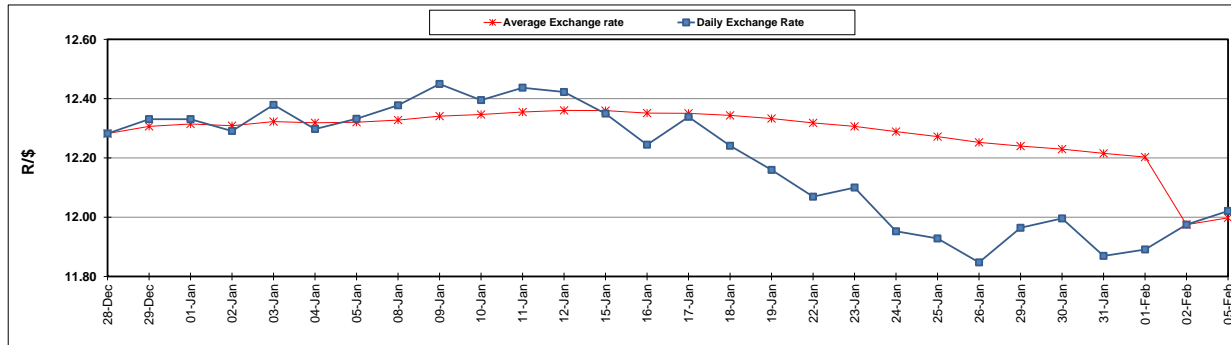
	PETROL 95 ULP	PETROL 93 ULP & LRP	DIESEL 0.05%	DIESEL 0.005%	ILL. PAR.
GAUTENG PUMP PRICE (SA c/l) AS FROM 07/02/2018	1 412.000	1 419.000	-	-	-
WHOLESALE PRICE (SA c/l) AS FROM 07/02/2018	-	-	1 256.630	1 259.030	818.388
SINGLE NATIONAL MAXIMUM RETAIL PRICE	-	-	-	-	1 056.000
BASIC FUEL PRICE - 05/02/2018 (SA c/l)	636.569	621.111	642.034	646.685	658.138
PRESS RELEASE CONTRIBUTION TO BFP 02/02/2018 - 05/02/2018 (SA c/l)	652.170	640.170	662.630	665.030	667.128
UNIT OVER/(UNDER) RECOVERY - 05/02/2018 (SA c/l)	15.601	19.059	20.596	18.345	8.990
AVERAGE BASIC FUEL PRICE 02/02/2018 - 05/02/2018	639.202	623.876	646.102	650.829	661.334
AVERAGE UNIT OVER/(UNDER) RECOVERY 02/02/2018 - 05/02/2018	12.968	16.294	16.528	14.201	5.794

ANALYSIS MOVEMENT OF AVERAGE OVER/(UNDER) RECOVERY

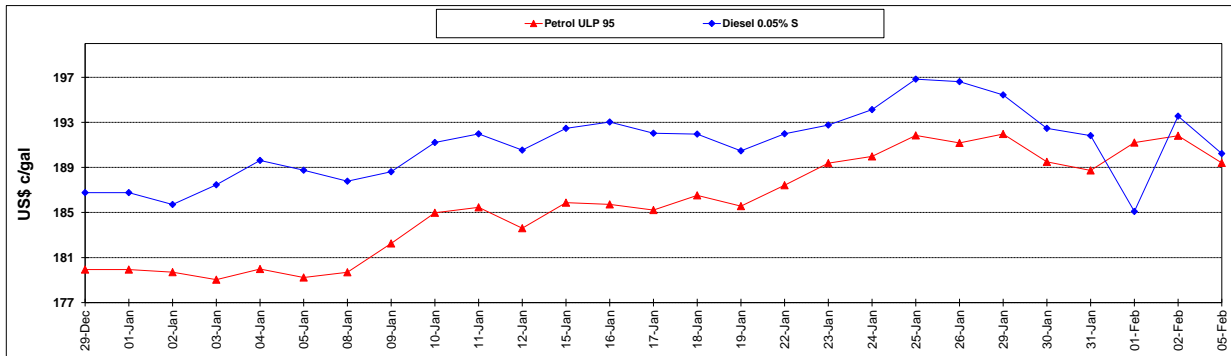
	PETROL 95	PETROL 93	DIESEL 0.05%	DIESEL 0.005%	ILL. PAR.
- MOVEMENT IN INTERNATIONAL PRODUCT PRICES	2.046	5.634	5.488	3.081	(5.506)
- MOVEMENT IN EXCHANGE RATE	10.922	10.660	11.040	11.120	11.300
AVERAGE UNIT OVER/(UNDER) RECOVERY 02/02/2018 - 05/02/2018	12.968	16.294	16.528	14.201	5.794

R/\$ EXCHANGE RATE - (R/\$ 12.0210 - 05/02/2018)

EXCHANGE RATE USED IN BASIC FUEL PRICE



INTERNATIONAL PRODUCT PRICES OF BASKET USED IN BASIC FUEL PRICE



BASIC FUEL PRICE IN SA CENTS PER LITRE

