

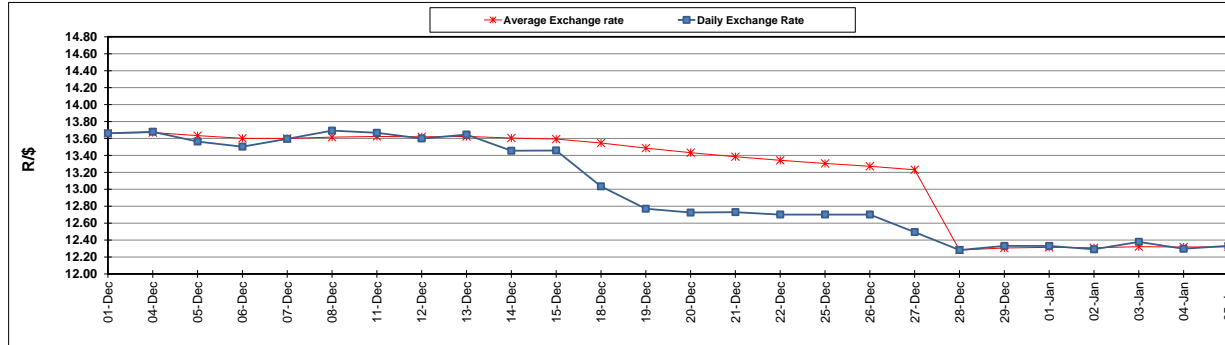
	PETROL 95 ULP	PETROL 93 ULP & LRP	DIESEL 0.05%	DIESEL 0.005%	ILL. PAR.
GAUTENG PUMP PRICE (SA c/l) AS FROM 03/01/2018	1 442.000	1 420.000	-	-	-
WHOLESALE PRICE (SA c/l) AS FROM 03/01/2018	-	-	1 273.630	1 276.030	837.388
SINGLE NATIONAL MAXIMUM RETAIL PRICE	-	-	-	-	1 082.000
BASIC FUEL PRICE - 05/01/2018 (SA c/l)	611.759	603.026	645.190	647.893	645.764
PRESS RELEASE CONTRIBUTION TO BFP 03/01/2018 - 05/01/2018 (SA c/l)	652.170	640.170	662.630	665.030	667.128
UNIT OVER/(UNDER) RECOVERY - 05/01/2018 (SA c/l)	40.411	37.144	17.440	17.137	21.364
AVERAGE BASIC FUEL PRICE 28/12/2017 - 05/01/2018	613.269	603.567	640.001	642.337	642.729
AVERAGE UNIT OVER/(UNDER) RECOVERY 28/12/2017 - 05/01/2018	58.330	53.175	35.200	37.550	40.399

### ANALYSIS MOVEMENT OF AVERAGE OVER/(UNDER) RECOVERY

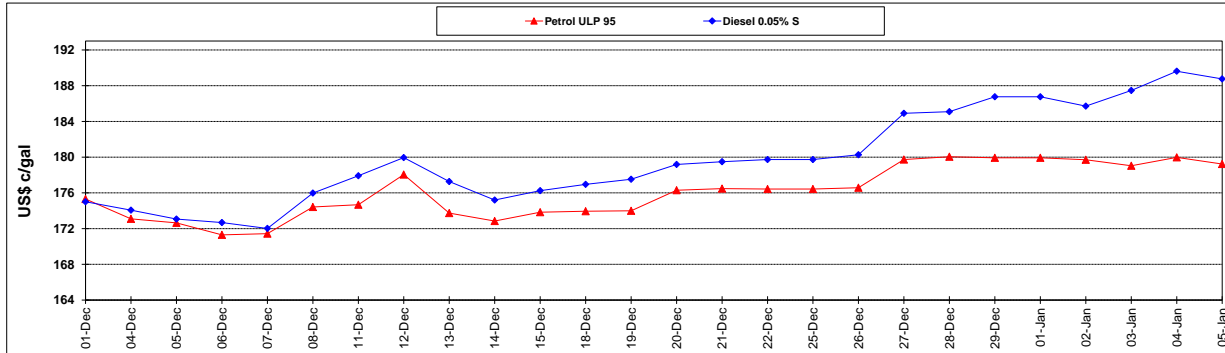
	PETROL 95	PETROL 93	DIESEL 0.05%	DIESEL 0.005%	ILL. PAR.
- MOVEMENT IN INTERNATIONAL PRODUCT PRICES	13.038	8.599	(12.066)	(9.889)	(7.069)
- MOVEMENT IN EXCHANGE RATE	45.292	44.575	47.266	47.439	47.468
AVERAGE UNIT OVER/(UNDER) RECOVERY 28/12/2017 - 05/01/2018	58.330	53.175	35.200	37.550	40.399

R/\$ EXCHANGE RATE - (R/\$ 12.3320 - 05/01/2018)

### EXCHANGE RATE USED IN BASIC FUEL PRICE



### INTERNATIONAL PRODUCT PRICES OF BASKET USED IN BASIC FUEL PRICE



### BASIC FUEL PRICE IN SA CENTS PER LITRE

