

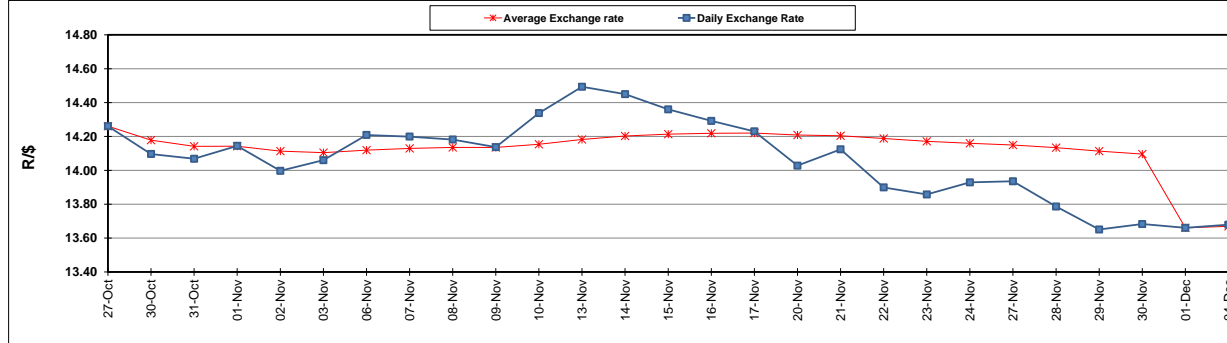
	PETROL 95 ULP	PETROL 93 ULP & LRP	DIESEL 0.05%	DIESEL 0.005%	ILL. PAR.
GAUTENG PUMP PRICE (SA c/l) AS FROM 06/12/2017	1 476.000	1 449.000	-	-	-
WHOLESALE PRICE (SA c/l) AS FROM 06/12/2017	-	-	1 295.630	1 302.030	865.388
SINGLE NATIONAL MAXIMUM RETAIL PRICE	-	-	-	-	1 119.000
BASIC FUEL PRICE - 04/12/2017 (SA c/l)	657.548	643.302	663.700	667.472	669.327
PRESS RELEASE CONTRIBUTION TO BFP 01/12/2017 - 04/12/2017 (SA c/l)	619.070	602.070	623.630	633.030	621.128
UNIT OVER/(UNDER) RECOVERY - 04/12/2017 (SA c/l)	(38.478)	(41.232)	(40.070)	(34.442)	(48.199)
AVERAGE BASIC FUEL PRICE 01/12/2017 - 04/12/2017	661.118	646.889	664.955	669.021	670.646
AVERAGE UNIT OVER/(UNDER) RECOVERY 01/12/2017 - 04/12/2017	(42.048)	(44.819)	(41.325)	(35.991)	(49.518)

### ANALYSIS MOVEMENT OF AVERAGE OVER/(UNDER) RECOVERY

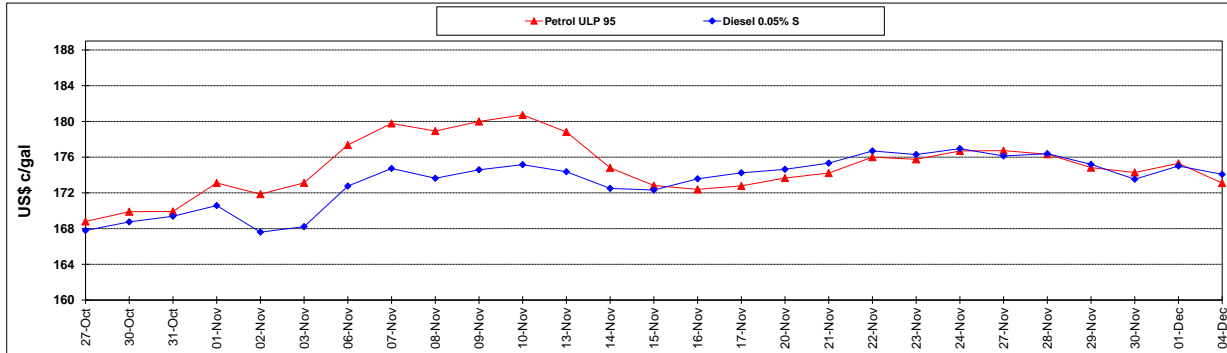
	PETROL 95	PETROL 93	DIESEL 0.05%	DIESEL 0.005%	ILL. PAR.
- MOVEMENT IN INTERNATIONAL PRODUCT PRICES	(62.680)	(65.007)	(62.077)	(56.869)	(70.447)
- MOVEMENT IN EXCHANGE RATE	20.632	20.188	20.752	20.878	20.929
AVERAGE UNIT OVER/(UNDER) RECOVERY 01/12/2017 - 04/12/2017	(42.048)	(44.819)	(41.325)	(35.991)	(49.518)

**R/\$ EXCHANGE RATE - (R/\$ 13.6790 - 04/12/2017)**

### EXCHANGE RATE USED IN BASIC FUEL PRICE



### INTERNATIONAL PRODUCT PRICES OF BASKET USED IN BASIC FUEL PRICE



### BASIC FUEL PRICE IN SA CENTS PER LITRE

