

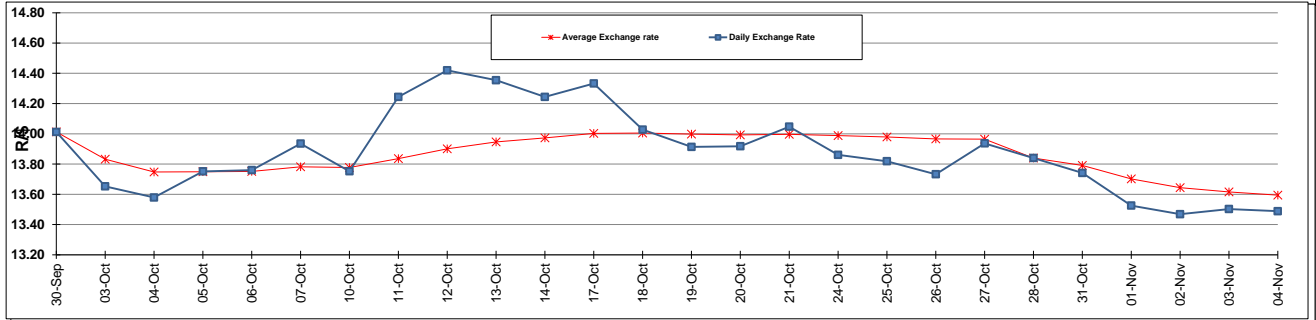
	PETROL 95 ULP	PETROL 93 ULP & LRP	DIESEL 0.05%	DIESEL 0.005%	ILL. PAR.
GAUTENG PUMP PRICE (SA c/l) AS FROM 02/11/2016	1 305.000	1 279.000	-	-	-
WHOLESALE PRICE (SA c/l) AS FROM 02/11/2016	-	-	1 134.870	1 138.270	726.628
SINGLE NATIONAL MAXIMUM RETAIL PRICE	-	-	-	-	934.000
BASIC FUEL PRICE - 04/11/2016 (SA c/l)	513.582	498.222	499.822	503.461	495.152
PRESS RELEASE CONTRIBUTION TO BFP 02/11/2016 - 04/11/2016 (SA c/l)	583.970	567.970	568.630	572.030	565.128
UNIT OVER/(UNDER) RECOVERY (SA c/l) - 04/11/2016	70.388	69.748	68.808	68.569	69.976
AVERAGE BASIC FUEL PRICE 28/10/2016 - 04/11/2016	539.413	524.425	523.526	527.675	518.701
AVERAGE UNIT OVER/(UNDER) RECOVERY 28/10/2016 - 04/11/2016	22.057	21.045	13.604	12.855	17.927

ANALYSIS MOVEMENT OF AVERAGE OVER/(UNDER) RECOVERY

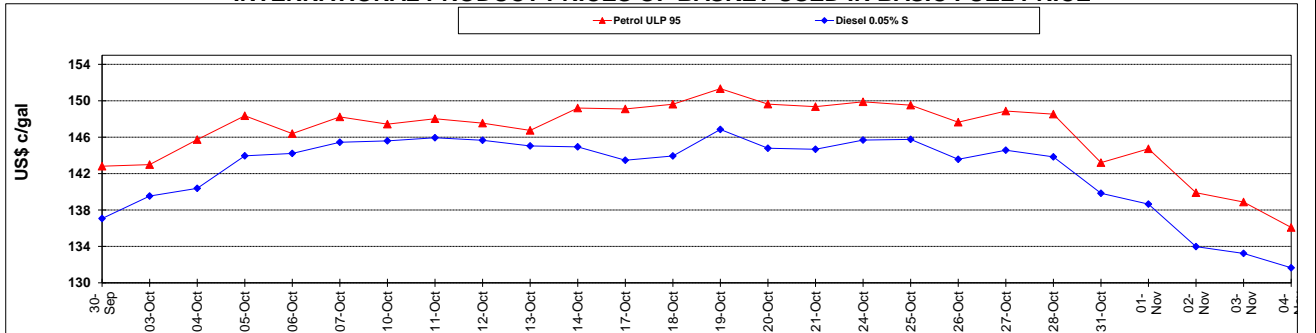
	PETROL 95	PETROL 93	DIESEL 0.05%	DIESEL 0.005%	ILL. PAR.
- MOVEMENT IN INTERNATIONAL PRODUCT PRICES	7.372	6.768	(0.649)	(1.511)	3.806
- MOVEMENT IN EXCHANGE RATE	14.685	14.277	14.253	14.366	14.121
AVERAGE UNIT OVER/(UNDER) RECOVERY 28/10/2016 - 04/11/2016	22.057	21.045	13.604	12.855	17.927

R/\$ EXCHANGE RATE - (R/\$ 13.4885- 04/11/2016)

EXCHANGE RATE USED IN BASIC FUEL PRICE



INTERNATIONAL PRODUCT PRICES OF BASKET USED IN BASIC FUEL PRICE



BASIC FUEL PRICE IN SA CENTS PER LITRE

