

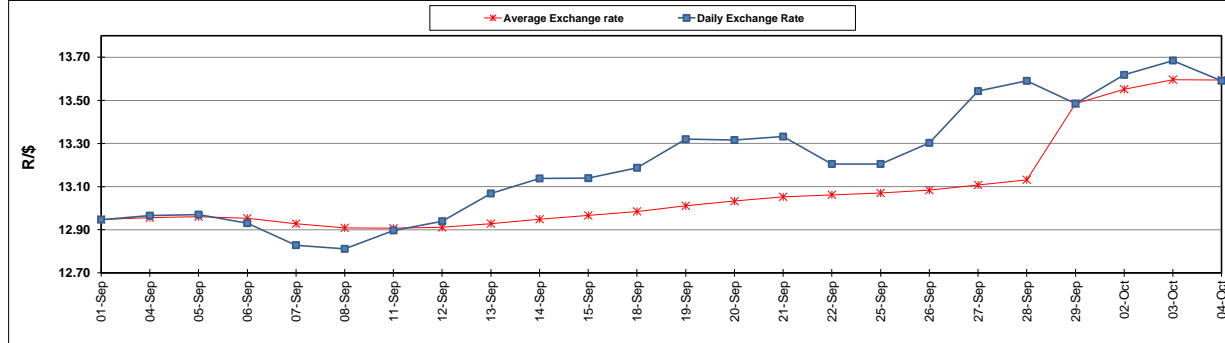
	PETROL 95 ULP	PETROL 93 ULP & LRP	DIESEL 0.05%	DIESEL 0.005%	ILL. PAR.
GAUTENG PUMP PRICE (SA c/l) AS FROM 04/10/2017	1 401.000	1 374.000	-	-	-
WHOLESALE PRICE (SA c/l) AS FROM 04/10/2017	-	-	1 212.330	1 217.730	770.088
SINGLE NATIONAL MAXIMUM RETAIL PRICE	-	-	-	-	992.000
BASIC FUEL PRICE - 04/10/2017 (SA c/l)	601.923	585.488	603.634	614.192	600.716
PRESS RELEASE CONTRIBUTION TO BFP 04/10/2017 - 04/10/2017 (SA c/l)	615.070	598.070	600.630	606.030	599.128
UNIT OVER/(UNDER) RECOVERY (SA c/l) - 04/10/2017	13.147	12.582	(3.004)	(8.162)	(1.588)
AVERAGE BASIC FUEL PRICE 29/09/2017 - 04/10/2017	606.031	589.951	615.431	625.739	612.297
AVERAGE UNIT OVER/(UNDER) RECOVERY 29/09/2017 - 04/10/2017	(12.711)	(10.631)	(46.301)	(51.209)	(41.669)

### ANALYSIS MOVEMENT OF AVERAGE OVER/(UNDER) RECOVERY

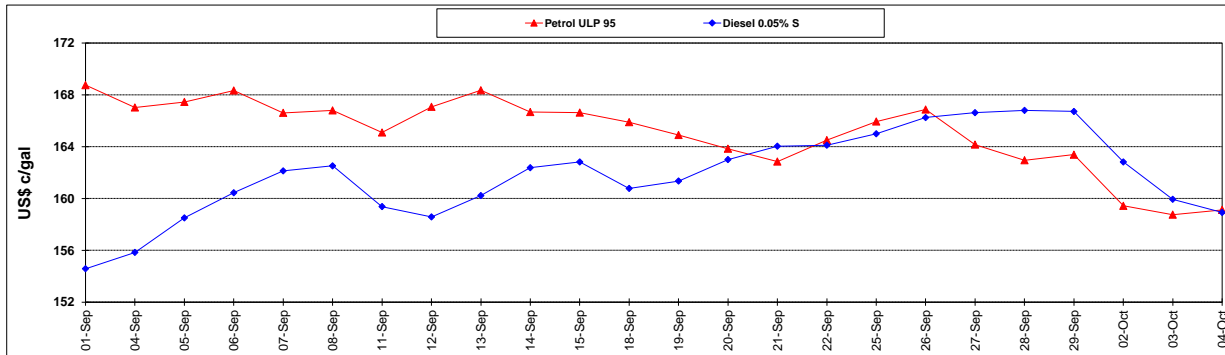
	PETROL 95	PETROL 93	DIESEL 0.05%	DIESEL 0.005%	ILL. PAR.
- MOVEMENT IN INTERNATIONAL PRODUCT PRICES	7.933	9.465	(25.337)	(29.894)	(20.811)
- MOVEMENT IN EXCHANGE RATE	(20.644)	(20.096)	(20.964)	(21.315)	(20.858)
AVERAGE UNIT OVER/(UNDER) RECOVERY 29/09/2017 - 04/10/2017	(12.711)	(10.631)	(46.301)	(51.209)	(41.669)

### R/\$ EXCHANGE RATE - (R/\$ 13.5910 - 04/10/2017)

#### EXCHANGE RATE USED IN BASIC FUEL PRICE



#### INTERNATIONAL PRODUCT PRICES OF BASKET USED IN BASIC FUEL PRICE



#### BASIC FUEL PRICE IN SA CENTS PER LITRE

