

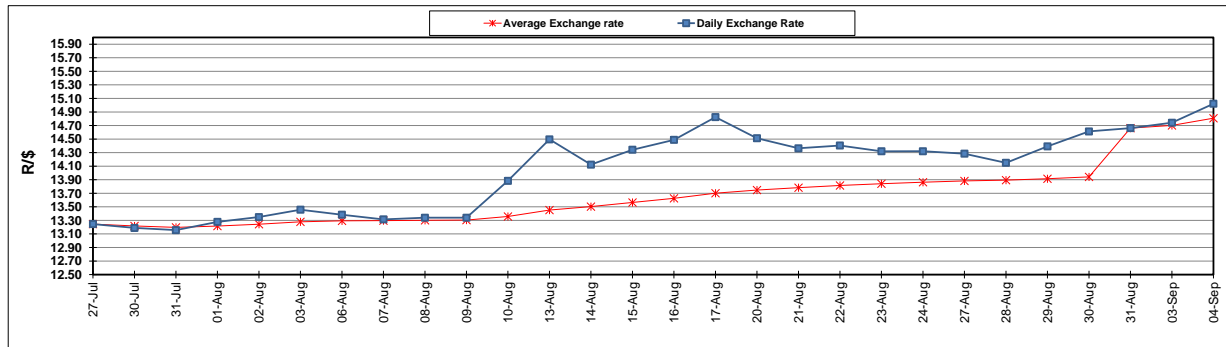
	PETROL 95 ULP	PETROL 93 ULP & LRP	DIESEL 0.05%	DIESEL 0.005%	ILL. PAR.
GAUTENG PUMP PRICE (SA c/l) AS FROM 05/09/2018	1 608.000	1 586.000	-	-	-
WHOLESALE PRICE (SA c/l) AS FROM 05/09/2018	-	-	1 440.830	1 445.230	953.088
SINGLE NATIONAL MAXIMUM RETAIL PRICE	-	-	-	-	1 233.000
BASIC FUEL PRICE - 04/09/2018 (SA c/l)	868.864	855.497	917.589	922.322	906.291
PRESS RELEASE CONTRIBUTION TO BFP 31/08/2018 - 04/09/2018 (SA c/l)	751.070	739.070	767.630	772.030	780.128
UNIT OVER/(UNDER) RECOVERY - 04/09/2018 (SA c/l)	(117.794)	(116.427)	(149.959)	(150.292)	(126.163)
AVERAGE BASIC FUEL PRICE 31/08/2018 - 04/09/2018	858.831	845.456	897.219	902.083	886.627
AVERAGE UNIT OVER/(UNDER) RECOVERY 31/08/2018 - 04/09/2018	(107.761)	(106.386)	(129.589)	(130.053)	(106.499)

ANALYSIS MOVEMENT OF AVERAGE OVER/(UNDER) RECOVERY

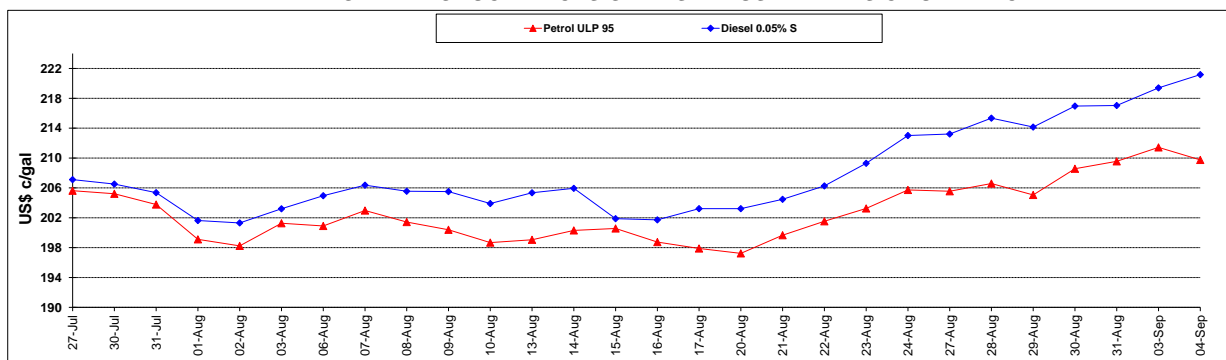
	PETROL 95	PETROL 93	DIESEL 0.05%	DIESEL 0.005%	ILL. PAR.
- MOVEMENT IN INTERNATIONAL PRODUCT PRICES	(57.577)	(56.983)	(77.161)	(77.341)	(54.690)
- MOVEMENT IN EXCHANGE RATE	(50.184)	(49.403)	(52.428)	(52.712)	(51.809)
AVERAGE UNIT OVER/(UNDER) RECOVERY 31/08/2018 - 04/09/2018	(107.761)	(106.386)	(129.589)	(130.053)	(106.499)

R/\$ EXCHANGE RATE - (R/\$15.0215 - 04/09/2018)

EXCHANGE RATE USED IN BASIC FUEL PRICE



INTERNATIONAL PRODUCT PRICES OF BASKET USED IN BASIC FUEL PRICE



BASIC FUEL PRICE IN SA CENTS PER LITRE

