

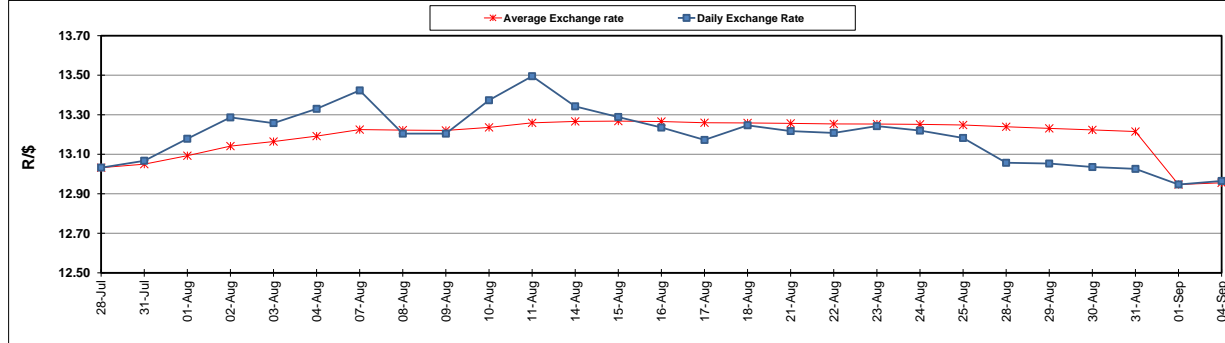
	PETROL 95 ULP	PETROL 93 ULP & LRP	DIESEL 0.05%	DIESEL 0.005%	ILL. PAR.
GAUTENG PUMP PRICE (SA c/l) AS FROM 06/09/2017	1 372.000	1 349.000	-	-	-
WHOLESALE PRICE (SA c/l) AS FROM 06/09/2017	-	-	1 170.330	1 175.730	732.088
SINGLE NATIONAL MAXIMUM RETAIL PRICE	-	-	-	-	941.000
BASIC FUEL PRICE - 04/09/2017 (SA c/l)	602.466	587.600	566.322	571.744	569.299
PRESS RELEASE CONTRIBUTION TO BFP 01/09/2017 - 04/09/2017 (SA c/l)	523.670	510.670	514.630	520.030	512.128
UNIT OVER/(UNDER) RECOVERY (SA c/l) - 04/09/2017	(78.796)	(76.930)	(51.692)	(51.714)	(57.171)
AVERAGE BASIC FUEL PRICE 01/09/2017 - 04/09/2017	605.009	590.592	563.764	569.083	568.197
AVERAGE UNIT OVER/(UNDER) RECOVERY 01/09/2017- 04/09/2017	(81.339)	(79.922)	(49.134)	(49.053)	(56.069)

ANALYSIS MOVEMENT OF AVERAGE OVER/(UNDER) RECOVERY

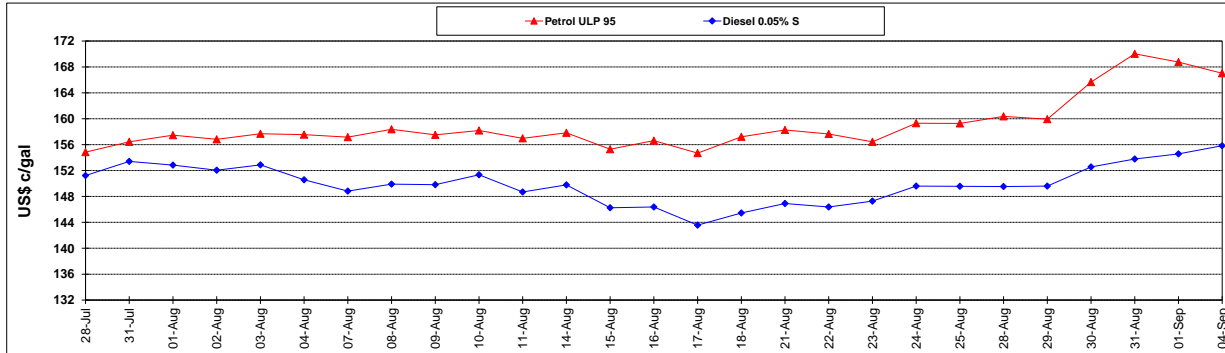
	PETROL 95	PETROL 93	DIESEL 0.05%	DIESEL 0.005%	ILL. PAR.
- MOVEMENT IN INTERNATIONAL PRODUCT PRICES	(93.443)	(91.737)	(60.413)	(60.438)	(67.436)
- MOVEMENT IN EXCHANGE RATE	12.104	11.815	11.279	11.385	11.367
AVERAGE UNIT OVER/(UNDER) RECOVERY 01/09/2017 - 04/09/2017	(81.339)	(79.922)	(49.134)	(49.053)	(56.069)

R/\$ EXCHANGE RATE - (R/\$ 12.9650 - 04/09/2017)

EXCHANGE RATE USED IN BASIC FUEL PRICE



INTERNATIONAL PRODUCT PRICES OF BASKET USED IN BASIC FUEL PRICE



BASIC FUEL PRICE IN SA CENTS PER LITRE

