

UPDATE OF THE BASIC FUEL PRICE

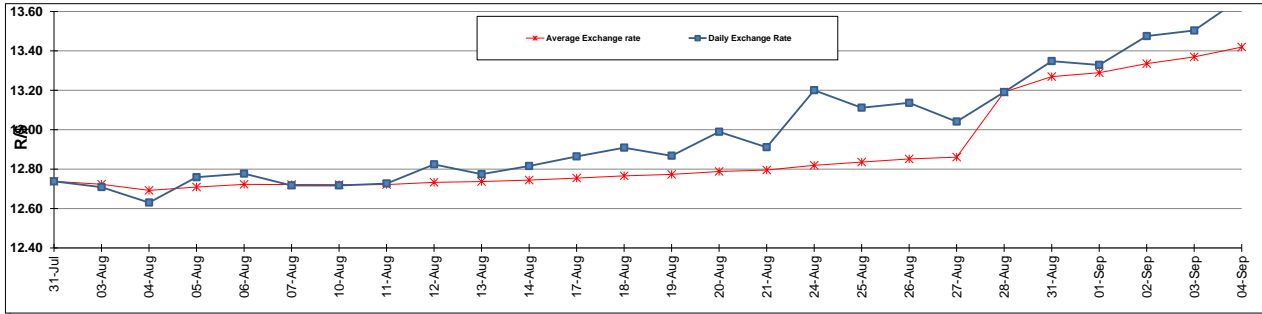
	PETROL 95 ULP	PETROL 93 ULP & LRP	DIESEL 0.05%	DIESEL 0.005%	ILL. PAR.
GAUTENG PUMP PRICE (SA c/l) AS FROM 02/09/2015	1,257.000	1,232.000	-	-	-
WHOLESALE PRICE (SA c/l) AS FROM 02/09/2015	-	-	1,040.970	1,049.370	661.828
SINGLE NATIONAL MAXIMUM RETAIL PRICE	-	-	-	-	847.000
BASIC FUEL PRICE - 04/09/2015 (SA c/l)	618.308	593.878	593.831	600.455	583.458
PRESS RELEASE CONTRIBUTION TO BFP 02/09/2015 - 04/09/2015 (SA c/l)	578.870	563.870	512.630	521.030	504.128
UNIT OVER/(UNDER) RECOVERY (SA c/l) - 04/09/2015	(39.438)	(30.008)	(81.201)	(79.425)	(79.330)
AVERAGE BASIC FUEL PRICE 28/08/2015 - 04/09/2015	594.451	571.307	572.577	579.975	561.369
AVERAGE UNIT OVER/(UNDER) RECOVERY 28/08/2015 - 04/09/2015	21.219	29.363	(32.947)	(33.445)	(29.741)

ANALYSIS MOVEMENT OF AVERAGE OVER/(UNDER) RECOVERY

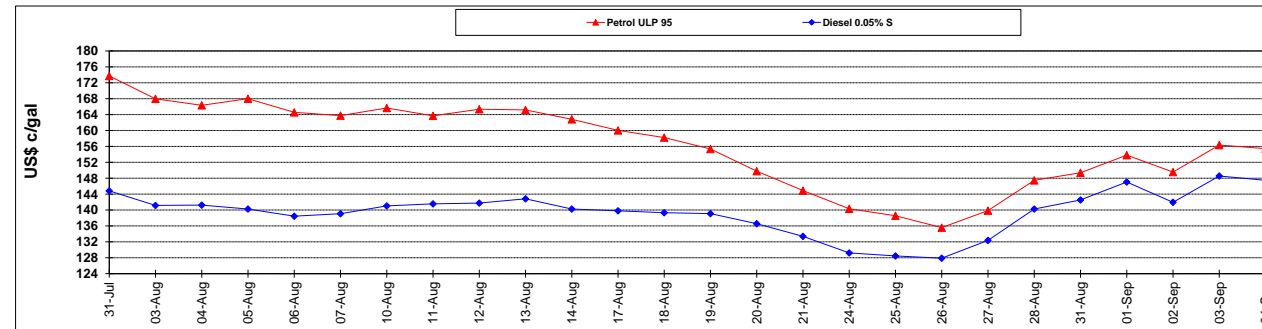
	PETROL 95	PETROL 93	DIESEL 0.05%	DIESEL 0.005%	ILL. PAR.
- MOVEMENT IN INTERNATIONAL PRODUCT PRICES	45.959	53.140	(9.117)	(9.307)	(6.377)
- MOVEMENT IN EXCHANGE RATE	(24.740)	(23.777)	(23.830)	(24.138)	(23.364)
AVERAGE UNIT OVER/(UNDER) RECOVERY 28/08/2015 - 04/09/2015	21.219	29.363	(32.947)	(33.445)	(29.741)

R/\$ EXCHANGE RATE - (R/\$ 13.6700 - 04/09/2015)

EXCHANGE RATE USED IN BASIC FUEL PRICE



INTERNATIONAL PRODUCT PRICES OF BASKET USED IN BASIC FUEL PRICE



BASIC FUEL PRICE IN SA CENTS PER LITRE

