

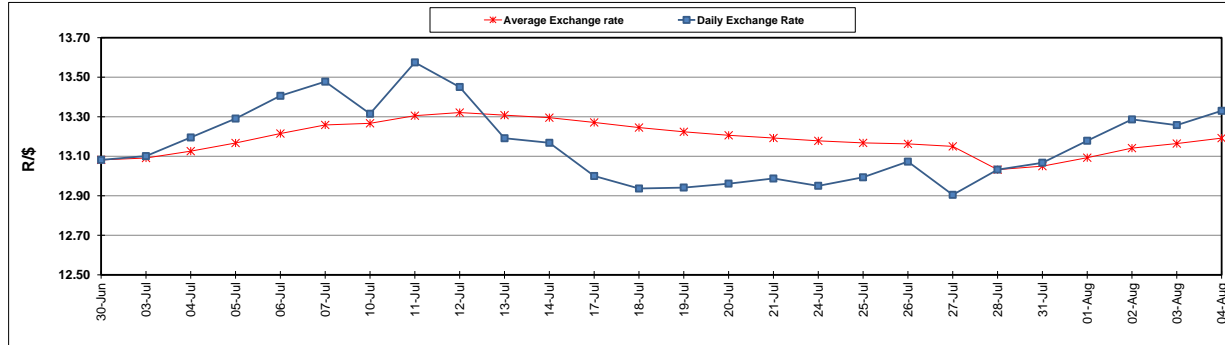
	PETROL 95 ULP	PETROL 93 ULP & LRP	DIESEL 0.05%	DIESEL 0.005%	ILL. PAR.
GAUTENG PUMP PRICE (SA c/l) AS FROM 02/08/2017	1 305.000	1 282.000	-	-	-
WHOLESALE PRICE (SA c/l) AS FROM 02/08/2017	-	-	1 126.330	1 131.730	683.088
SINGLE NATIONAL MAXIMUM RETAIL PRICE	-	-	-	-	876.000
BASIC FUEL PRICE - 04/08/2017 (SA c/l)	585.982	570.024	563.756	570.611	565.467
PRESS RELEASE CONTRIBUTION TO BFP 02/08/2017 - 04/08/2017 (SA c/l)	523.670	510.670	514.630	520.030	512.128
UNIT OVER/(UNDER) RECOVERY (SA c/l) - 04/08/2017	(62.312)	(59.354)	(49.126)	(50.581)	(53.339)
AVERAGE BASIC FUEL PRICE 28/07/2017 - 04/08/2017	577.266	561.955	563.429	569.998	561.974
AVERAGE UNIT OVER/(UNDER) RECOVERY 28/07/2017 - 04/08/2017	(63.096)	(60.785)	(63.299)	(64.968)	(62.846)

ANALYSIS MOVEMENT OF AVERAGE OVER/(UNDER) RECOVERY

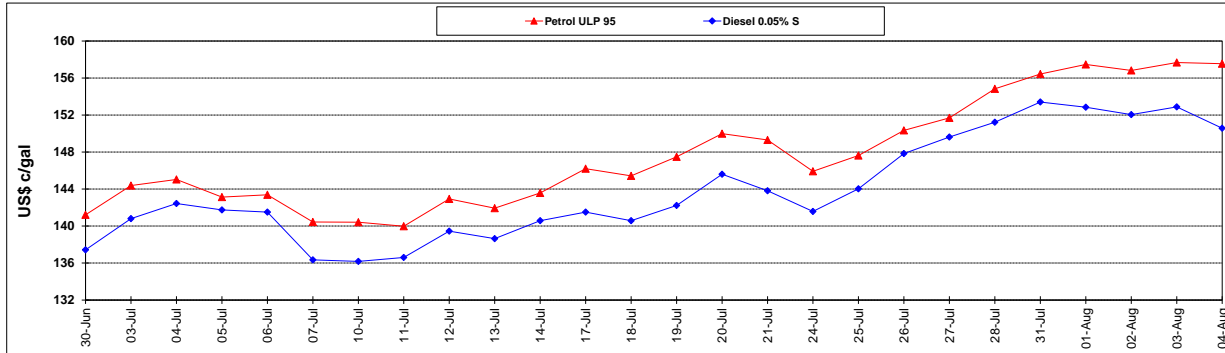
	PETROL 95	PETROL 93	DIESEL 0.05%	DIESEL 0.005%	ILL. PAR.
- MOVEMENT IN INTERNATIONAL PRODUCT PRICES	(61.258)	(58.996)	(61.505)	(63.153)	(61.057)
- MOVEMENT IN EXCHANGE RATE	(1.838)	(1.789)	(1.794)	(1.815)	(1.789)
AVERAGE UNIT OVER/(UNDER) RECOVERY 28/07/2017 - 04/08/2017	(63.096)	(60.785)	(63.299)	(64.968)	(62.846)

R/\$ EXCHANGE RATE - (R/\$ 13.3300- 04/08/2017)

EXCHANGE RATE USED IN BASIC FUEL PRICE



INTERNATIONAL PRODUCT PRICES OF BASKET USED IN BASIC FUEL PRICE



BASIC FUEL PRICE IN SA CENTS PER LITRE

