

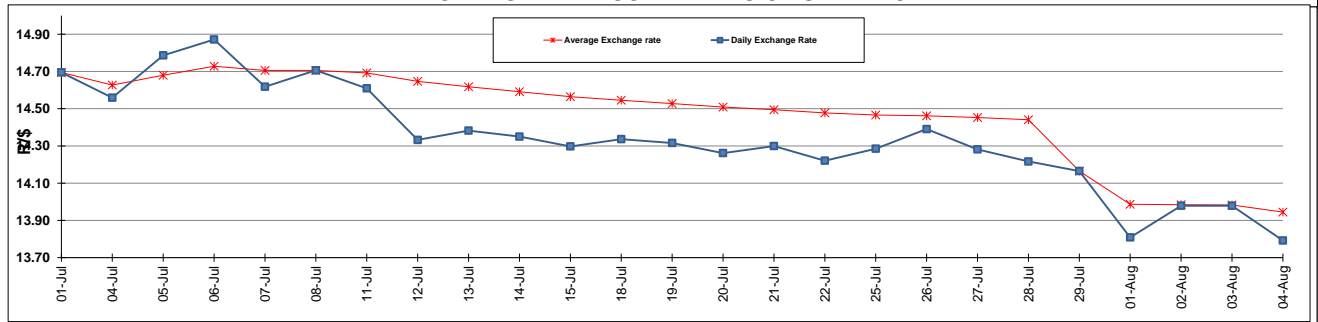
	PETROL 95 ULP	PETROL 93 ULP & LRP	DIESEL 0.05%	DIESEL 0.005%	ILL. PAR.
GAUTENG PUMP PRICE (SA c/l) AS FROM 03/08/2016	1 235.000	1 208.000	-	-	-
WHOLESALE PRICE (SA c/l) AS FROM 03/08/2016	-	-	1 096.870	1 101.270	694.628
SINGLE NATIONAL MAXIMUM RETAIL PRICE	-	-	-	-	891.000
BASIC FUEL PRICE - 04/08/2016 (SA c/l)	473.480	459.463	450.760	454.160	453.618
PRESS RELEASE CONTRIBUTION TO BFP 03/08/2116 - 03/08/2016 (SA c/l)	513.970	496.970	530.630	535.030	533.128
UNIT OVER/(UNDER) RECOVERY (SA c/l) - 04/08/2016	40.490	37.507	79.870	80.870	79.510
AVERAGE BASIC FUEL PRICE 29/07/2116 - 04/08/2016	466.056	452.040	451.497	454.841	455.313
AVERAGE UNIT OVER/(UNDER) RECOVERY 29/07/2116 - 04/08/2016	107.314	104.330	123.533	123.989	117.415

ANALYSIS MOVEMENT OF AVERAGE OVER/(UNDER) RECOVERY

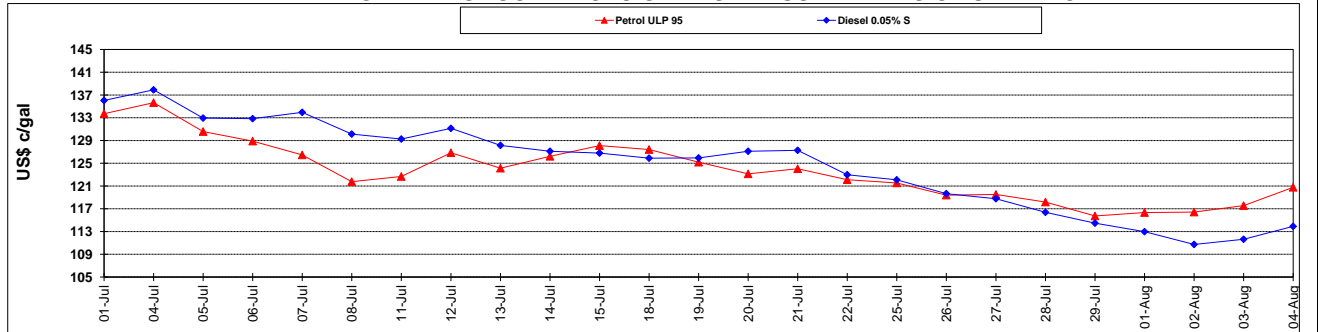
	PETROL 95	PETROL 93	DIESEL 0.05%	DIESEL 0.005%	ILL. PAR.
- MOVEMENT IN INTERNATIONAL PRODUCT PRICES	90.733	88.248	107.470	107.807	101.217
- MOVEMENT IN EXCHANGE RATE	16.581	16.082	16.063	16.182	16.198
AVERAGE UNIT OVER/(UNDER) RECOVERY 29/07/2016 - 04/08/2016	107.314	104.330	123.533	123.989	117.415

R/\$ EXCHANGE RATE - (R/\$ 13.7919 - 04/08/2016)

EXCHANGE RATE USED IN BASIC FUEL PRICE



INTERNATIONAL PRODUCT PRICES OF BASKET USED IN BASIC FUEL PRICE



BASIC FUEL PRICE IN SA CENTS PER LITRE

