

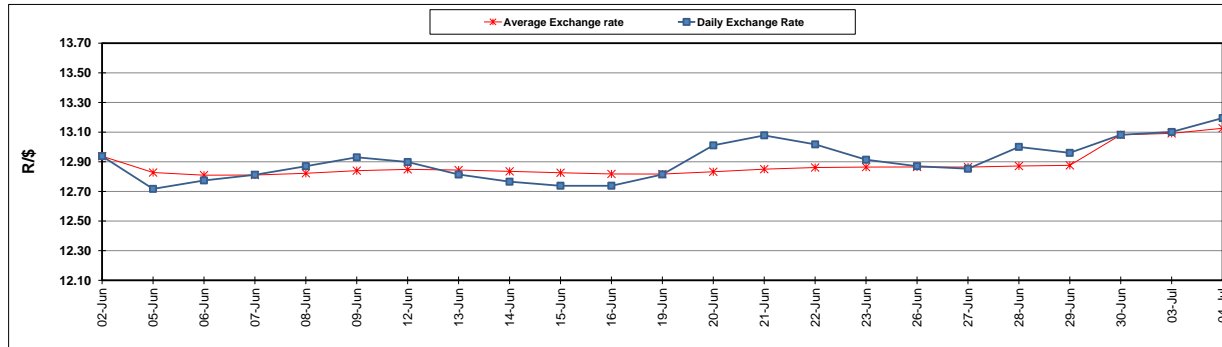
	PETROL 95 ULP	PETROL 93 ULP & LRP	DIESEL 0.05%	DIESEL 0.005%	ILL. PAR.
GAUTENG PUMP PRICE (SA c/l) AS FROM 05/07/2017	1 286.000	1 263.000	-	-	-
WHOLESALE PRICE (SA c/l) AS FROM 05/07/2017	-	-	1 097.330	1 101.730	657.088
SINGLE NATIONAL MAXIMUM RETAIL PRICE	-	-	-	-	841.000
BASIC FUEL PRICE - 04/07/2017 (SA c/l)	535.814	519.962	528.842	534.442	528.517
PRESS RELEASE CONTRIBUTION TO BFP 30/06/2017 - 04/07/2017 (SA c/l)	572.670	560.670	545.630	550.030	543.128
UNIT OVER/(UNDER) RECOVERY (SA c/l) - 04/07/2017	36.856	40.708	16.788	15.588	14.611
AVERAGE BASIC FUEL PRICE 30/06/2017 - 04/07/2017	529.161	512.744	519.960	525.137	519.437
AVERAGE UNIT OVER/(UNDER) RECOVERY 30/06/2017- 04/07/2017	43.509	47.926	25.670	24.893	23.691

### ANALYSIS MOVEMENT OF AVERAGE OVER/(UNDER) RECOVERY

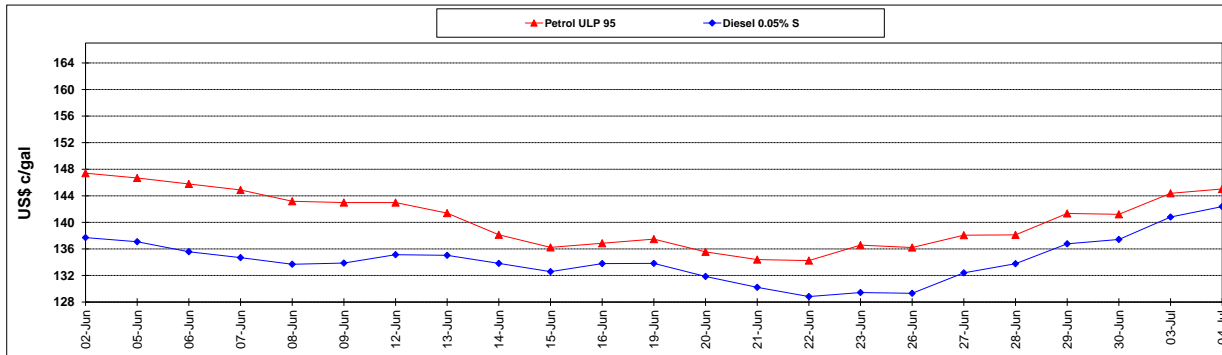
	PETROL 95	PETROL 93	DIESEL 0.05%	DIESEL 0.005%	ILL. PAR.
- MOVEMENT IN INTERNATIONAL PRODUCT PRICES	53.600	57.704	35.585	34.907	33.596
- MOVEMENT IN EXCHANGE RATE	(10.091)	(9.778)	(9.915)	(10.014)	(9.905)
AVERAGE UNIT OVER/(UNDER) RECOVERY 30/06/2017 - 04/07/2017	43.509	47.926	25.670	24.893	23.691

R/\$ EXCHANGE RATE - (R/\$ 13.1950 - 04/07/2017)

### EXCHANGE RATE USED IN BASIC FUEL PRICE



### INTERNATIONAL PRODUCT PRICES OF BASKET USED IN BASIC FUEL PRICE



### BASIC FUEL PRICE IN SA CENTS PER LITRE

