

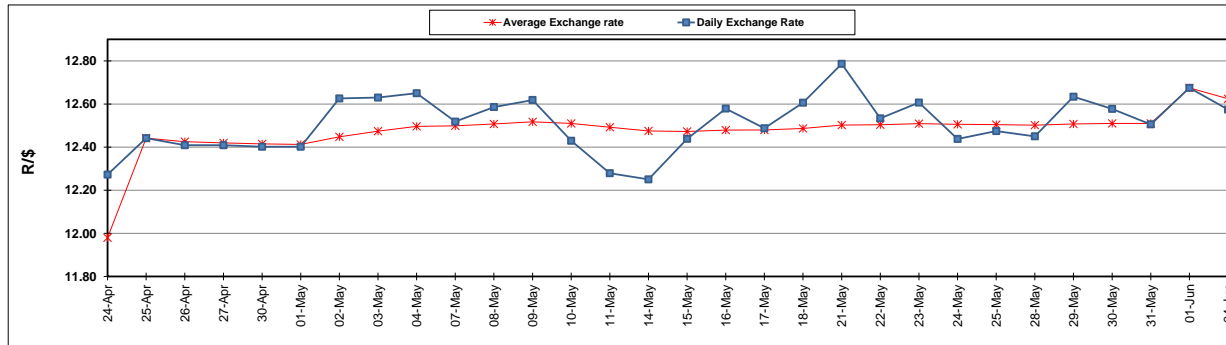
	PETROL 95 ULP	PETROL 93 ULP & LRP	DIESEL 0.05%	DIESEL 0.005%	ILL. PAR.
GAUTENG PUMP PRICE (SA c/l) AS FROM 06/06/2018	1 579.000	1 554.000	-	-	-
WHOLESALE PRICE (SA c/l) AS FROM 06/06/2018	-	-	1 418.830	1 425.230	927.088
SINGLE NATIONAL MAXIMUM RETAIL PRICE	-	-	-	-	1 198.000
BASIC FUEL PRICE - 04/06/2018 (SA c/l)	715.281	701.921	730.679	735.454	732.541
PRESS RELEASE CONTRIBUTION TO BFP 01/06/2018 - 04/06/2018 (SA c/l)	645.070	630.070	660.630	665.030	672.128
UNIT OVER/(UNDER) RECOVERY - 04/06/2018 (SA c/l)	(70.211)	(71.851)	(70.049)	(70.424)	(60.413)
AVERAGE BASIC FUEL PRICE 01/06/2018 - 04/06/2018	722.466	709.059	737.099	741.964	739.500
AVERAGE UNIT OVER/(UNDER) RECOVERY 01/06/2018 - 04/06/2018	(77.396)	(78.989)	(76.469)	(76.934)	(67.372)

### ANALYSIS MOVEMENT OF AVERAGE OVER/(UNDER) RECOVERY

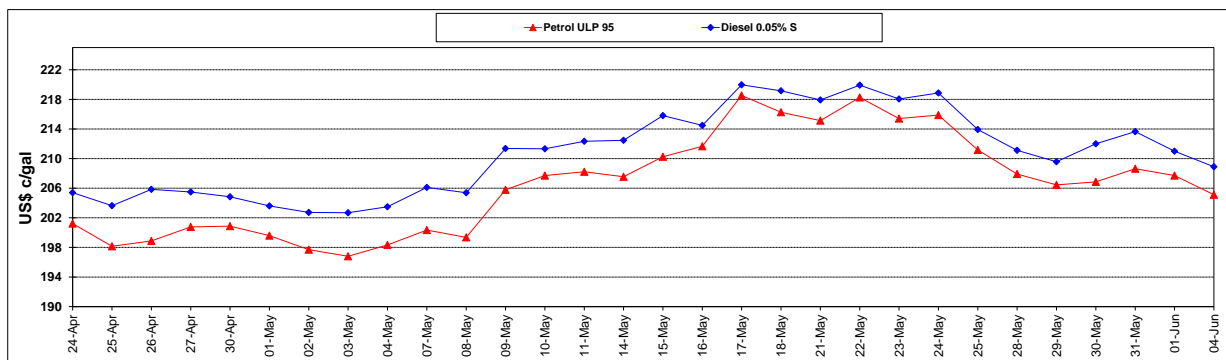
	PETROL 95	PETROL 93	DIESEL 0.05%	DIESEL 0.005%	ILL. PAR.
- MOVEMENT IN INTERNATIONAL PRODUCT PRICES	(70.832)	(72.547)	(69.772)	(70.193)	(60.653)
- MOVEMENT IN EXCHANGE RATE	(6.564)	(6.442)	(6.697)	(6.741)	(6.719)
AVERAGE UNIT OVER/(UNDER) RECOVERY 01/06/2018 - 04/06/2018	(77.396)	(78.989)	(76.469)	(76.934)	(67.372)

### R/\$ EXCHANGE RATE - (R/\$12.5743 - 04/06/2018)

#### EXCHANGE RATE USED IN BASIC FUEL PRICE



#### INTERNATIONAL PRODUCT PRICES OF BASKET USED IN BASIC FUEL PRICE



#### BASIC FUEL PRICE IN SA CENTS PER LITRE

