

UPDATE OF THE BASIC FUEL PRICE

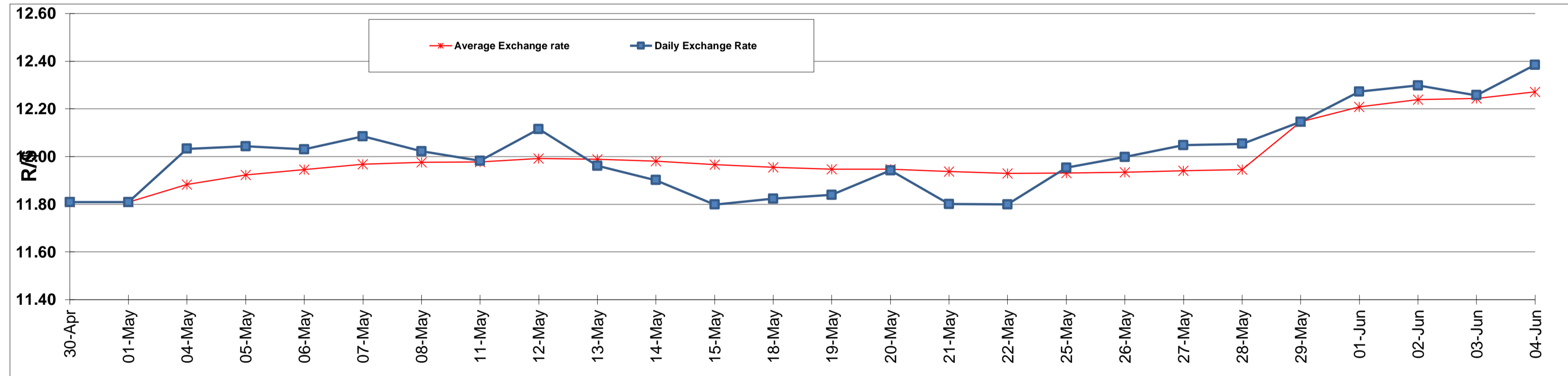
	PETROL 95 ULP	PETROL 93 ULP & LRP	DIESEL 0.05%	DIESEL 0.005%	ILL. PAR.
GAUTENG PUMP PRICE (SA c/l) AS FROM 03/06/2015	1,336.000	1,308.000	-	-	-
WHOLESALE PRICE (SA c/l) AS FROM 03/06/2015	-	-	1,166.790	1,170.190	780.828
SINGLE NATIONAL MAXIMUM RETAIL PRICE	-	-	-	-	1,006.000
BASIC FUEL PRICE - 04/06/2015 (SA c/l)	683.714	670.561	631.697	634.447	615.312
PRESS RELEASE CONTRIBUTION TO BFP 03/06/2015 - 04/06/2015 (SA c/l)	662.650	664.650	638.630	642.030	623.128
UNIT OVER/(UNDER) RECOVERY (SA c/l) - 04/06/2015	(21.064)	(5.911)	6.933	7.583	7.816
AVERAGE BASIC FUEL PRICE 29/05/2015 - 04/06/2015	685.368	672.134	641.221	644.247	625.373
AVERAGE UNIT OVER/(UNDER) RECOVERY 29/05/2015 - 04/06/2015	(50.918)	(47.684)	(31.991)	(29.817)	(27.445)

ANALYSIS MOVEMENT OF AVERAGE OVER/(UNDER) RECOVERY

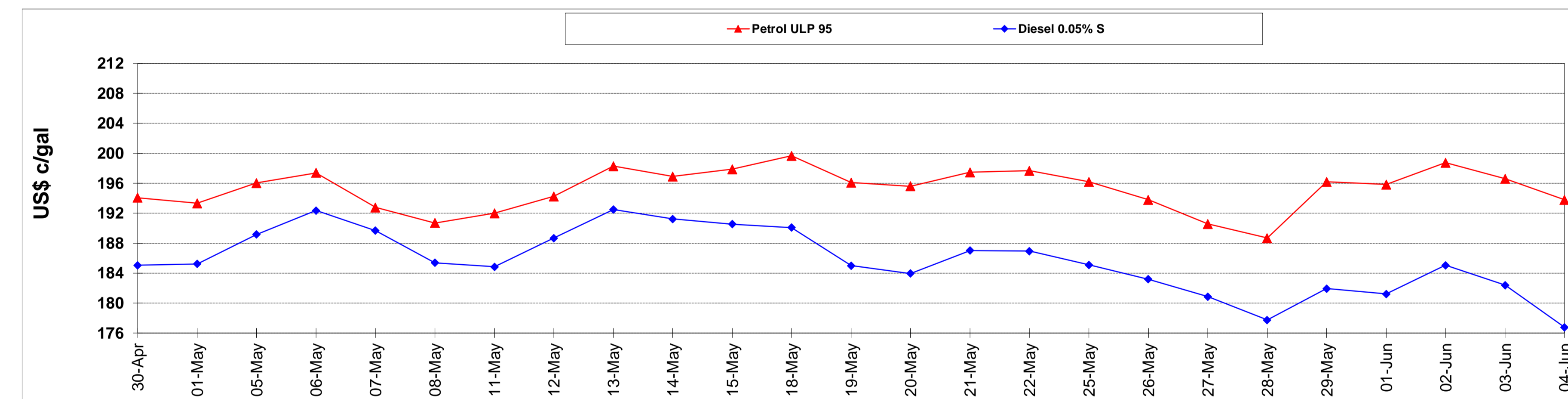
	PETROL 95	PETROL 93	DIESEL 0.05%	DIESEL 0.005%	ILL. PAR.
- MOVEMENT IN INTERNATIONAL PRODUCT PRICES	(32.700)	(29.818)	(14.946)	(12.692)	(10.822)
- MOVEMENT IN EXCHANGE RATE	(18.218)	(17.866)	(17.045)	(17.125)	(16.623)
AVERAGE UNIT OVER/(UNDER) RECOVERY 29/05/2015 - 04/06/2015	(50.918)	(47.684)	(31.991)	(29.817)	(27.445)

R/\$ EXCHANGE RATE - (R/\$ 12.3851 - 04/06/2015)

EXCHANGE RATE USED IN BASIC FUEL PRICE



INTERNATIONAL PRODUCT PRICES OF BASKET USED IN BASIC FUEL PRICE



BASIC FUEL PRICE IN SA CENTS PER LITRE

