

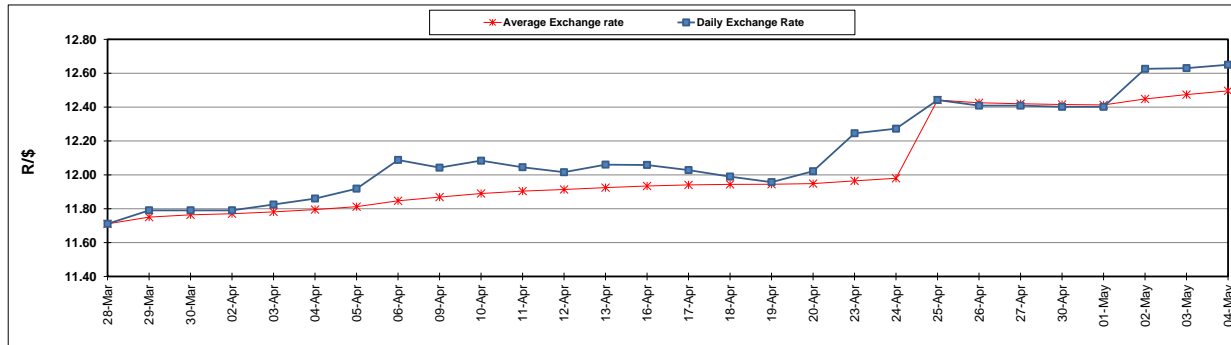
	PETROL 95 ULP	PETROL 93 ULP & LRP	DIESEL 0.05%	DIESEL 0.005%	ILL. PAR.
GAUTENG PUMP PRICE (SA c/l) AS FROM 02/05/2018	1 497.000	1 472.000	-	-	-
WHOLESALE PRICE (SA c/l) AS FROM 02/05/2018	-	-	1 333.830	1 338.230	845.088
SINGLE NATIONAL MAXIMUM RETAIL PRICE	-	-	-	-	1 089.000
BASIC FUEL PRICE - 04/05/2018 (SA c/l)	698.115	687.077	718.309	724.596	728.589
PRESS RELEASE CONTRIBUTION TO BFP 02/05/2018 - 04/05/2018 (SA c/l)	645.070	630.070	660.630	665.030	672.128
UNIT OVER/(UNDER) RECOVERY - 04/05/2018 (SA c/l)	(53.045)	(57.007)	(57.679)	(59.566)	(56.461)
AVERAGE BASIC FUEL PRICE 25/04/2018 - 04/05/2018	692.302	678.281	712.326	717.707	726.621
AVERAGE UNIT OVER/(UNDER) RECOVERY 25/04/2018 - 04/05/2018	(77.857)	(78.836)	(88.571)	(88.927)	(86.993)

ANALYSIS MOVEMENT OF AVERAGE OVER/(UNDER) RECOVERY

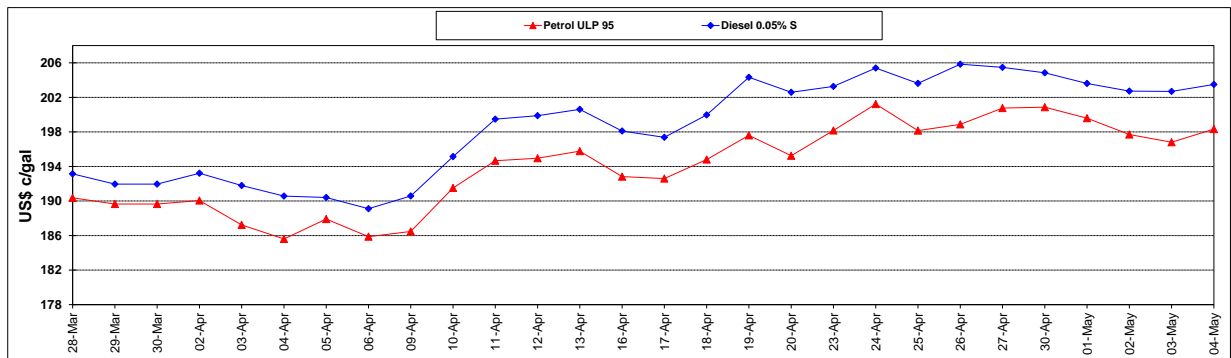
	PETROL 95	PETROL 93	DIESEL 0.05%	DIESEL 0.005%	ILL. PAR.
- MOVEMENT IN INTERNATIONAL PRODUCT PRICES	(49.248)	(50.806)	(59.134)	(59.268)	(56.965)
- MOVEMENT IN EXCHANGE RATE	(28.609)	(28.030)	(29.437)	(29.659)	(30.028)
AVERAGE UNIT OVER/(UNDER) RECOVERY 25/04/2018 - 04/05/2018	(77.857)	(78.836)	(88.571)	(88.927)	(86.993)

R/\$ EXCHANGE RATE - (R/\$12.6500 - 04/05/2018)

EXCHANGE RATE USED IN BASIC FUEL PRICE



INTERNATIONAL PRODUCT PRICES OF BASKET USED IN BASIC FUEL PRICE



BASIC FUEL PRICE IN SA CENTS PER LITRE

