

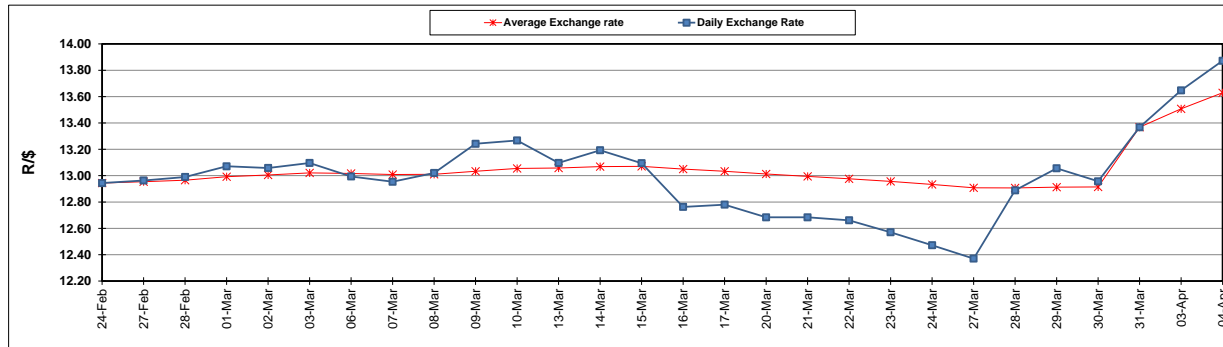
	PETROL 95 ULP	PETROL 93 ULP & LRP	DIESEL 0.05%	DIESEL 0.005%	ILL. PAR.
GAUTENG PUMP PRICE (SA c/l) AS FROM 05/04/2017	1 330.000	1 308.000	-	-	-
WHOLESALE PRICE (SA c/l) AS FROM 05/04/2017	-	-	1 150.330	1 152.730	702.088
SINGLE NATIONAL MAXIMUM RETAIL PRICE	-	-	-	-	901.000
BASIC FUEL PRICE - 04/04/2017 (SA c/l)	616.753	599.387	577.668	581.719	575.707
PRESS RELEASE CONTRIBUTION TO BFP 31/03/2017 - 04/04/2017 (SA c/l)	612.870	598.870	588.630	591.030	583.128
UNIT OVER/(UNDER) RECOVERY (SA c/l) - 04/04/2017	(3.883)	(0.517)	10.962	9.311	7.421
AVERAGE BASIC FUEL PRICE 31/03/2017 - 04/04/2017	601.432	584.252	565.773	569.598	564.325
AVERAGE UNIT OVER/(UNDER) RECOVERY 31/03/2017- 04/04/2017	11.438	14.618	22.857	21.432	18.803

ANALYSIS MOVEMENT OF AVERAGE OVER/(UNDER) RECOVERY

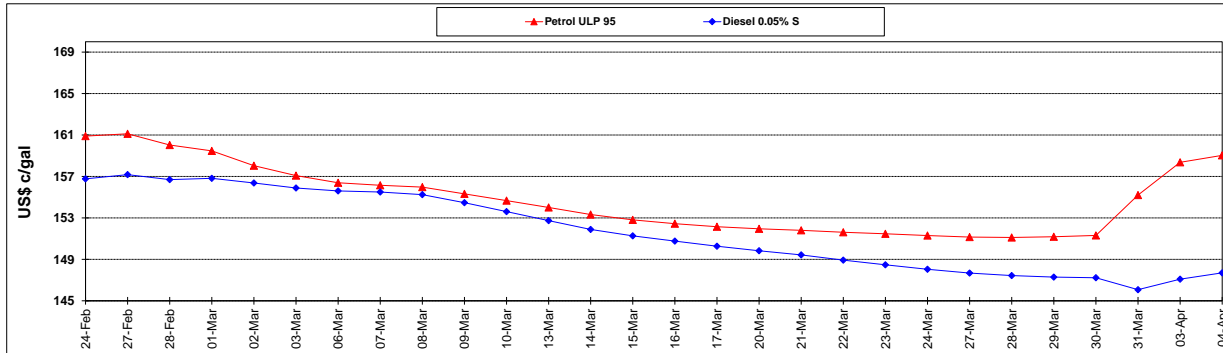
	PETROL 95	PETROL 93	DIESEL 0.05%	DIESEL 0.005%	ILL. PAR.
- MOVEMENT IN INTERNATIONAL PRODUCT PRICES	42.963	45.243	52.513	51.289	48.383
- MOVEMENT IN EXCHANGE RATE	(31.525)	(30.625)	(29.656)	(29.857)	(29.580)
AVERAGE UNIT OVER/(UNDER) RECOVERY 31/03/2017 - 04/04/2017	11.438	14.618	22.857	21.432	18.803

R/\$ EXCHANGE RATE - (R/\$ 13.8723 - 04/04/2017)

EXCHANGE RATE USED IN BASIC FUEL PRICE



INTERNATIONAL PRODUCT PRICES OF BASKET USED IN BASIC FUEL PRICE



BASIC FUEL PRICE IN SA CENTS PER LITRE

