

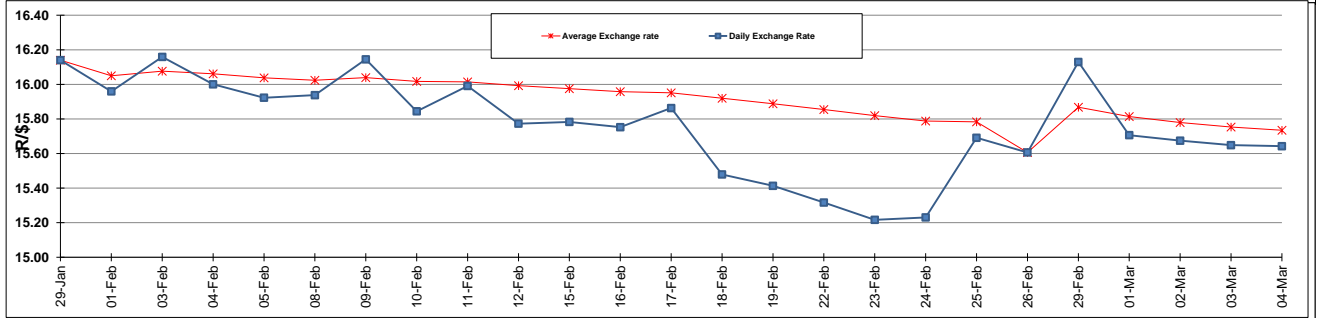
	PETROL 95 ULP	PETROL 93 ULP & LRP	DIESEL 0.05%	DIESEL 0.005%	ILL. PAR.
GAUTENG PUMP PRICE (SA c/l) AS FROM 02/03/2016	1,174.000	1,146.000	-	-	-
WHOLESALE PRICE (SA c/l) AS FROM 02/03/2016	-	-	958.170	961.570	605.028
SINGLE NATIONAL MAXIMUM RETAIL PRICE	-	-	-	-	772.000
BASIC FUEL PRICE - 04/03/2016 (SA c/l)	517.400	492.796	471.127	476.058	479.970
PRESS RELEASE CONTRIBUTION TO BFP 02/03/2016 - 04/03/2016 (SA c/l)	487.970	469.970	427.630	431.030	445.128
UNIT OVER/(UNDER) RECOVERY (SA c/l) - 04/03/2016	(29.430)	(22.826)	(43.497)	(45.028)	(34.842)
AVERAGE BASIC FUEL PRICE 04/03/2016 - 04/03/2016	509.730	486.567	463.998	468.186	479.075
AVERAGE UNIT OVER/(UNDER) RECOVERY 26/02/2016 - 04/03/2016	12.740	17.903	(43.868)	(44.156)	(42.447)

ANALYSIS MOVEMENT OF AVERAGE OVER/(UNDER) RECOVERY

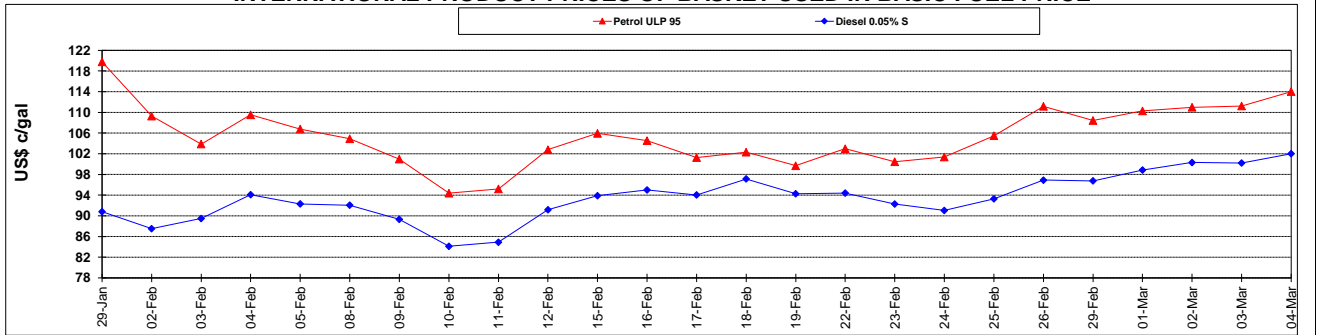
	PETROL 95	PETROL 93	DIESEL 0.05%	DIESEL 0.005%	ILL. PAR.
- MOVEMENT IN INTERNATIONAL PRODUCT PRICES	11.166	16.400	(45.301)	(45.602)	(43.927)
- MOVEMENT IN EXCHANGE RATE	1.574	1.503	1.433	1.446	1.480
AVERAGE UNIT OVER/(UNDER) RECOVERY 26/02/2016 - 04/03/2016	12.740	17.903	(43.868)	(44.156)	(42.447)

R/\$ EXCHANGE RATE - (R/\$ 15.6425 - 04/03/2016)

EXCHANGE RATE USED IN BASIC FUEL PRICE



INTERNATIONAL PRODUCT PRICES OF BASKET USED IN BASIC FUEL PRICE



BASIC FUEL PRICE IN SA CENTS PER LITRE

