

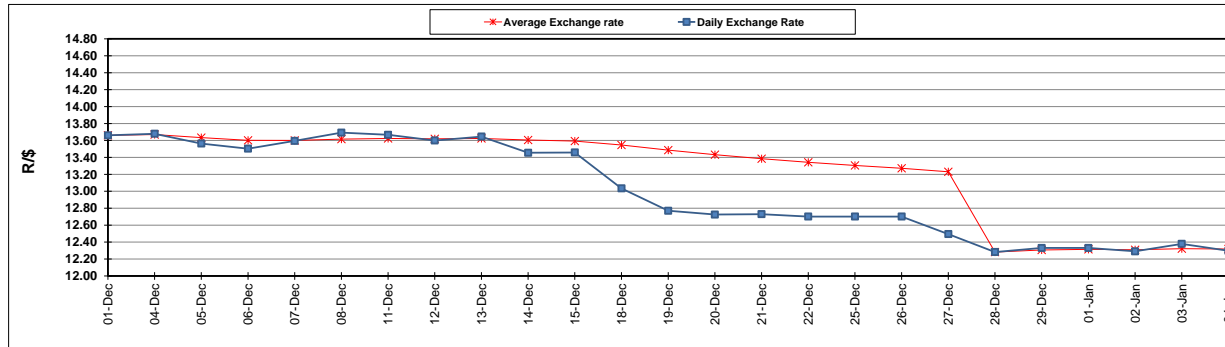
	PETROL 95 ULP	PETROL 93 ULP & LRP	DIESEL 0.05%	DIESEL 0.005%	ILL. PAR.
GAUTENG PUMP PRICE (SA c/l) AS FROM 03/01/2018	1 442.000	1 420.000	-	-	-
WHOLESALE PRICE (SA c/l) AS FROM 03/01/2018	-	-	1 273.630	1 276.030	837.388
SINGLE NATIONAL MAXIMUM RETAIL PRICE	-	-	-	-	1 082.000
BASIC FUEL PRICE - 04/01/2018 (SA c/l)	612.520	603.800	646.230	648.688	647.636
PRESS RELEASE CONTRIBUTION TO BFP 03/01/2018 - 04/01/2018 (SA c/l)	652.170	640.170	662.630	665.030	667.128
UNIT OVER/(UNDER) RECOVERY - 04/01/2018 (SA c/l)	39.650	36.370	16.400	16.342	19.492
AVERAGE BASIC FUEL PRICE 28/12/2017 - 04/01/2018	613.521	603.657	639.136	641.411	642.223
AVERAGE UNIT OVER/(UNDER) RECOVERY 28/12/2017 - 04/01/2018	61.316	55.847	38.161	40.952	43.571

ANALYSIS MOVEMENT OF AVERAGE OVER/(UNDER) RECOVERY

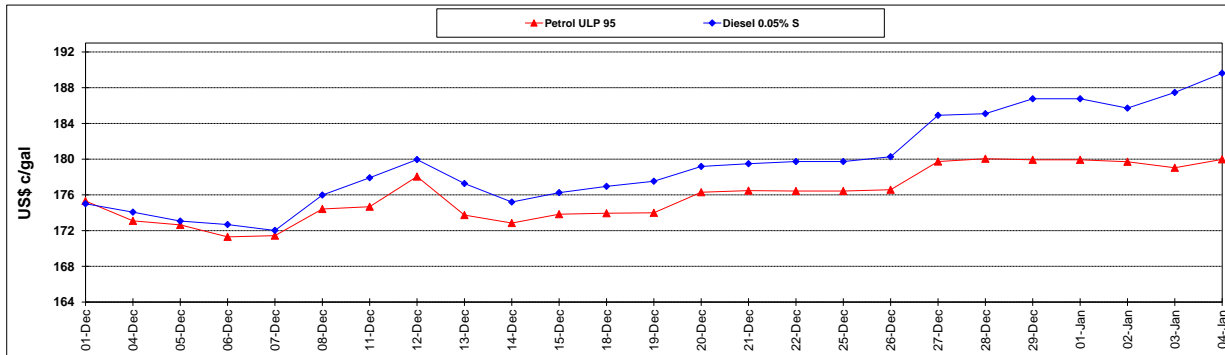
	PETROL 95	PETROL 93	DIESEL 0.05%	DIESEL 0.005%	ILL. PAR.
- MOVEMENT IN INTERNATIONAL PRODUCT PRICES	15.904	11.164	(9.147)	(6.524)	(3.965)
- MOVEMENT IN EXCHANGE RATE	45.412	44.682	47.308	47.476	47.537
AVERAGE UNIT OVER/(UNDER) RECOVERY 28/12/2017 - 04/01/2018	61.316	55.847	38.161	40.952	43.571

R/\$ EXCHANGE RATE - (R/\$ 12.2973 - 04/01/2018)

EXCHANGE RATE USED IN BASIC FUEL PRICE



INTERNATIONAL PRODUCT PRICES OF BASKET USED IN BASIC FUEL PRICE



BASIC FUEL PRICE IN SA CENTS PER LITRE

