

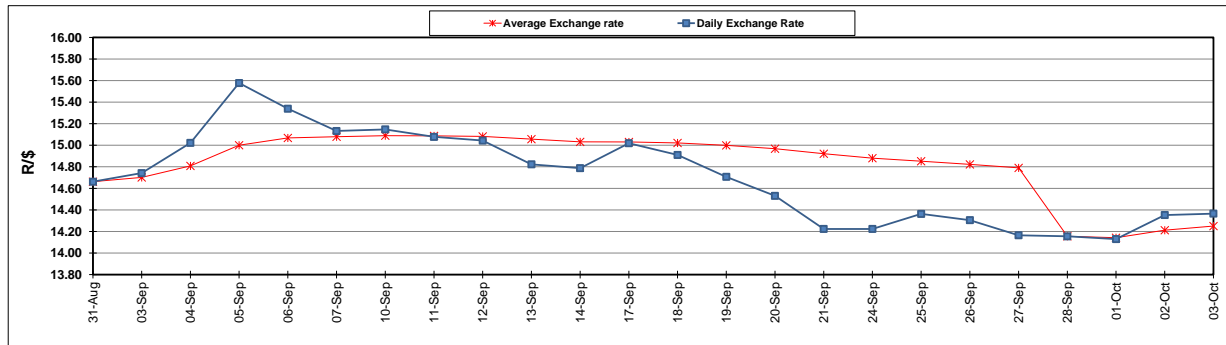
	PETROL 95 ULP	PETROL 93 ULP & LRP	DIESEL 0.05%	DIESEL 0.005%	ILL. PAR.
GAUTENG PUMP PRICE (SA c/l) AS FROM 03/10/2018	1 708.000	1 685.000	-	-	-
WHOLESALE PRICE (SA c/l) AS FROM 03/10/2018	-	-	1 564.830	1 569.230	1 057.088
SINGLE NATIONAL MAXIMUM RETAIL PRICE	-	-	-	-	1 372.000
BASIC FUEL PRICE - 03/10/2018 (SA c/l)	867.684	856.165	925.364	932.329	917.961
PRESS RELEASE CONTRIBUTION TO BFP 03/10/2018 - 03/10/2018 (SA c/l)	851.170	838.170	891.630	896.030	884.128
UNIT OVER/(UNDER) RECOVERY - 03/10/2018 (SA c/l)	(16.514)	(17.995)	(33.734)	(36.299)	(33.833)
AVERAGE BASIC FUEL PRICE 28/09/2018 - 03/10/2018	858.138	845.820	908.064	914.061	899.653
AVERAGE UNIT OVER/(UNDER) RECOVERY 28/09/2018 - 03/10/2018	(81.968)	(81.900)	(109.434)	(111.031)	(93.525)

ANALYSIS MOVEMENT OF AVERAGE OVER/(UNDER) RECOVERY

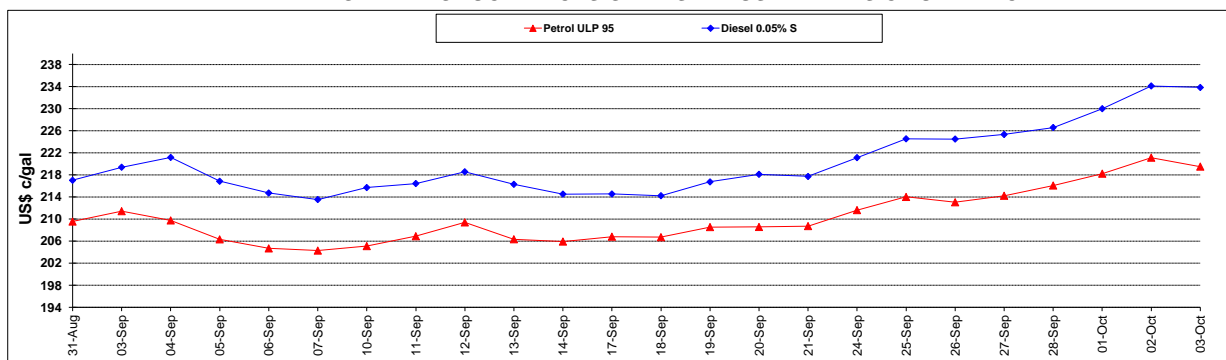
	PETROL 95	PETROL 93	DIESEL 0.05%	DIESEL 0.005%	ILL. PAR.
- MOVEMENT IN INTERNATIONAL PRODUCT PRICES	(114.437)	(113.903)	(143.792)	(145.616)	(127.565)
- MOVEMENT IN EXCHANGE RATE	32.469	32.003	34.358	34.585	34.040
AVERAGE UNIT OVER/(UNDER) RECOVERY 28/09/2018 - 03/10/2018	(81.968)	(81.900)	(109.434)	(111.031)	(93.525)

R/\$ EXCHANGE RATE - (R/\$14.3658 - 03/10/2018)

EXCHANGE RATE USED IN BASIC FUEL PRICE



INTERNATIONAL PRODUCT PRICES OF BASKET USED IN BASIC FUEL PRICE



BASIC FUEL PRICE IN SA CENTS PER LITRE

