

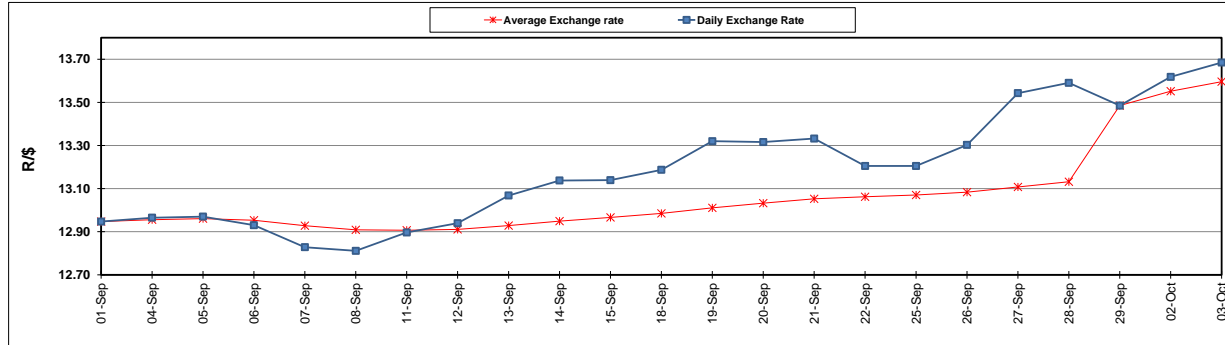
	PETROL 95 ULP	PETROL 93 ULP & LRP	DIESEL 0.05%	DIESEL 0.005%	ILL. PAR.
GAUTENG PUMP PRICE (SA c/l) AS FROM 04/10/2017	1 401.000	1 374.000	-	-	-
WHOLESALE PRICE (SA c/l) AS FROM 04/10/2017	-	-	1 212.330	1 217.730	770.088
SINGLE NATIONAL MAXIMUM RETAIL PRICE	-	-	-	-	992.000
BASIC FUEL PRICE - 03/10/2017 (SA c/l)	604.692	588.131	611.463	621.804	608.150
PRESS RELEASE CONTRIBUTION TO BFP 29/09/2017 - 03/10/2017 (SA c/l)	586.070	573.070	558.630	564.030	561.128
UNIT OVER/(UNDER) RECOVERY (SA c/l) - 03/10/2017	(18.622)	(15.061)	(52.833)	(57.774)	(47.022)
AVERAGE BASIC FUEL PRICE 29/09/2017 - 03/10/2017	607.400	591.439	619.363	629.588	616.157
AVERAGE UNIT OVER/(UNDER) RECOVERY 29/09/2017 - 03/10/2017	(21.330)	(18.369)	(60.733)	(65.558)	(55.029)

ANALYSIS MOVEMENT OF AVERAGE OVER/(UNDER) RECOVERY

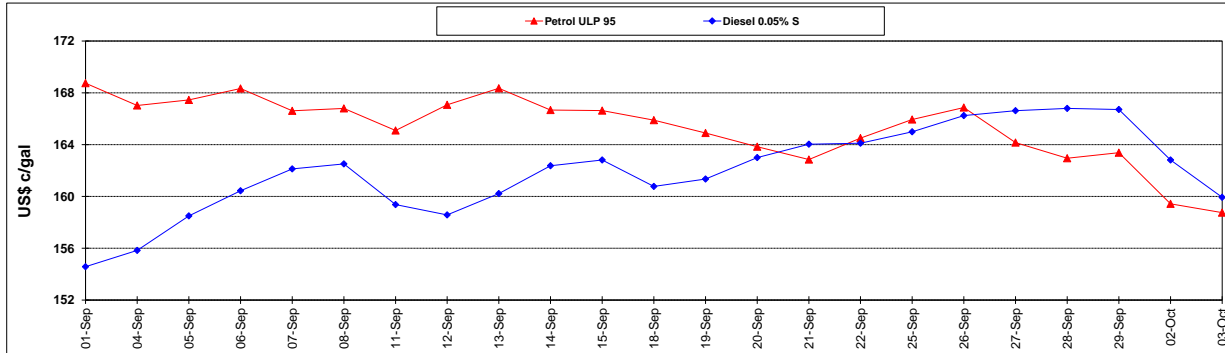
	PETROL 95	PETROL 93	DIESEL 0.05%	DIESEL 0.005%	ILL. PAR.
- MOVEMENT IN INTERNATIONAL PRODUCT PRICES	(0.587)	1.828	(39.582)	(44.058)	(33.987)
- MOVEMENT IN EXCHANGE RATE	(20.743)	(20.197)	(21.151)	(21.500)	(21.042)
AVERAGE UNIT OVER/(UNDER) RECOVERY 29/09/2017 - 03/10/2017	(21.330)	(18.369)	(60.733)	(65.558)	(55.029)

R/\$ EXCHANGE RATE - (R/\$ 13.6848 - 03/10/2017)

EXCHANGE RATE USED IN BASIC FUEL PRICE



INTERNATIONAL PRODUCT PRICES OF BASKET USED IN BASIC FUEL PRICE



BASIC FUEL PRICE IN SA CENTS PER LITRE

