

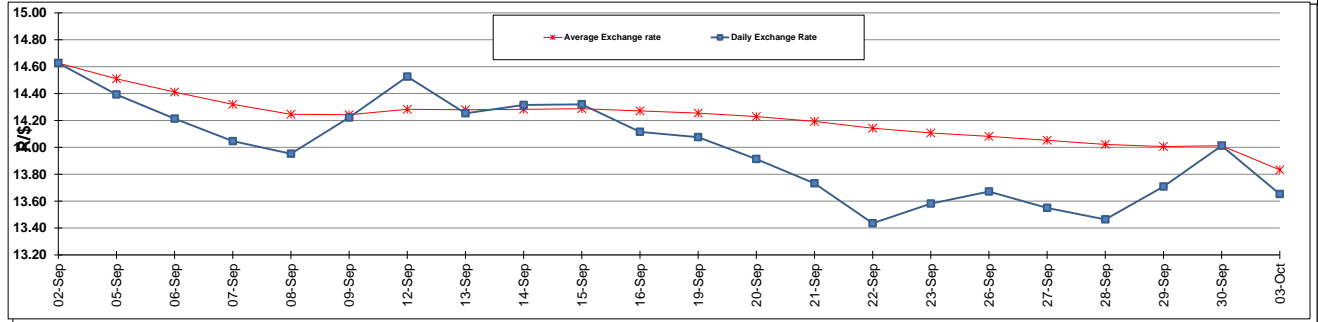
	PETROL 95 ULP	PETROL 93 ULP & LRP	DIESEL 0.05%	DIESEL 0.005%	ILL. PAR.
GAUTENG PUMP PRICE (SA c/l) AS FROM 05/10/2016	1 260.000	1 234.000	-	-	-
WHOLESALE PRICE (SA c/l) AS FROM 05/10/2016	-	-	1 071.870	1 075.270	669.628
SINGLE NATIONAL MAXIMUM RETAIL PRICE	-	-	-	-	858.000
BASIC FUEL PRICE - 03/10/2016 (SA c/l)	547.101	533.402	536.973	540.048	533.930
PRESS RELEASE CONTRIBUTION TO BFP 30/09/2016 - 03/10/2016 (SA c/l)	495.970	478.970	482.630	486.030	486.128
UNIT OVER/(UNDER) RECOVERY (SA c/l) - 03/10/2016	(51.131)	(54.432)	(54.343)	(54.018)	(47.802)
AVERAGE BASIC FUEL PRICE 30/09/2016 - 03/10/2016	554.455	539.309	539.968	543.105	537.580
AVERAGE UNIT OVER/(UNDER) RECOVERY 30/09/2016 - 03/10/2016	(58.485)	(60.339)	(57.338)	(57.075)	(51.452)

ANALYSIS MOVEMENT OF AVERAGE OVER/(UNDER) RECOVERY

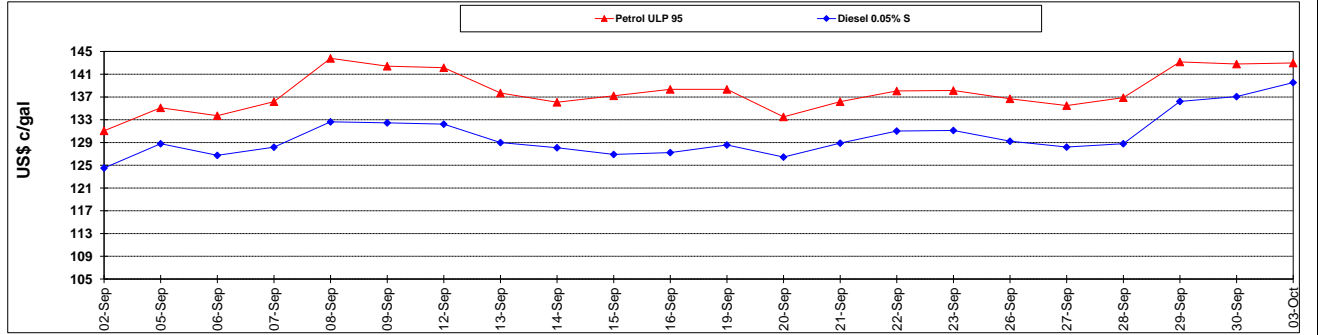
	PETROL 95	PETROL 93	DIESEL 0.05%	DIESEL 0.005%	ILL. PAR.
- MOVEMENT IN INTERNATIONAL PRODUCT PRICES	(65.427)	(67.092)	(64.099)	(63.875)	(58.183)
- MOVEMENT IN EXCHANGE RATE	6.942	6.753	6.761	6.800	6.731
AVERAGE UNIT OVER/(UNDER) RECOVERY 30/09/2016 - 03/10/2016	(58.485)	(60.339)	(57.338)	(57.075)	(51.452)

R/\$ EXCHANGE RATE - (R/\$ 13.6525 - 03/10/2016)

EXCHANGE RATE USED IN BASIC FUEL PRICE



INTERNATIONAL PRODUCT PRICES OF BASKET USED IN BASIC FUEL PRICE



BASIC FUEL PRICE IN SA CENTS PER LITRE

