

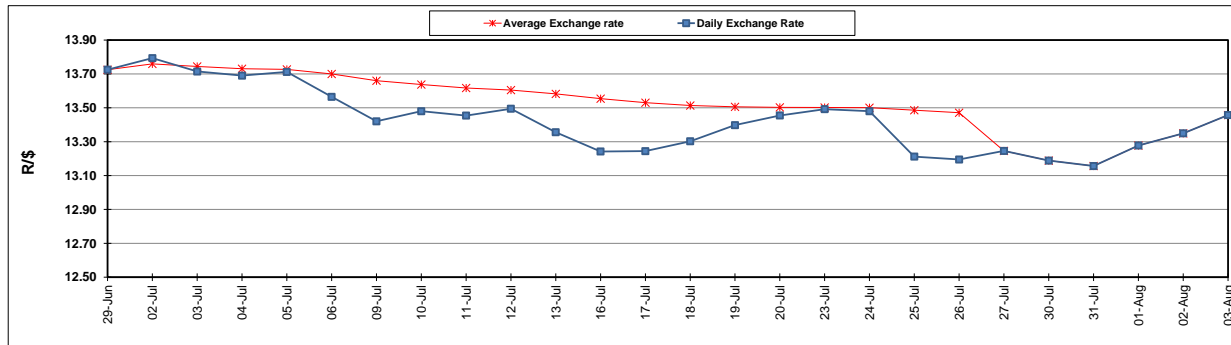
	PETROL 95 ULP	PETROL 93 ULP & LRP	DIESEL 0.05%	DIESEL 0.005%	ILL. PAR.
GAUTENG PUMP PRICE (SA c/l) AS FROM 03/08/2018	1 603.000	1 582.000	-	-	-
WHOLESALE PRICE (SA c/l) AS FROM 03/08/2018	-	-	1 440.830	1 445.230	953.088
SINGLE NATIONAL MAXIMUM RETAIL PRICE	-	-	-	-	1 233.000
BASIC FUEL PRICE - 03/08/2018 (SA c/l)	749.614	736.797	759.300	763.268	765.750
PRESS RELEASE CONTRIBUTION TO BFP 01/08/2018 - 03/08/2018 (SA c/l)	751.070	739.070	767.630	772.030	780.128
UNIT OVER/(UNDER) RECOVERY - 03/08/2018 (SA c/l)	1.456	2.273	8.330	8.762	14.378
AVERAGE BASIC FUEL PRICE 27/07/2018 - 03/08/2018	743.713	731.495	753.519	757.626	762.736
AVERAGE UNIT OVER/(UNDER) RECOVERY 27/06/2018 - 03/08/2018	6.857	7.075	16.111	16.404	15.393

ANALYSIS MOVEMENT OF AVERAGE OVER/(UNDER) RECOVERY

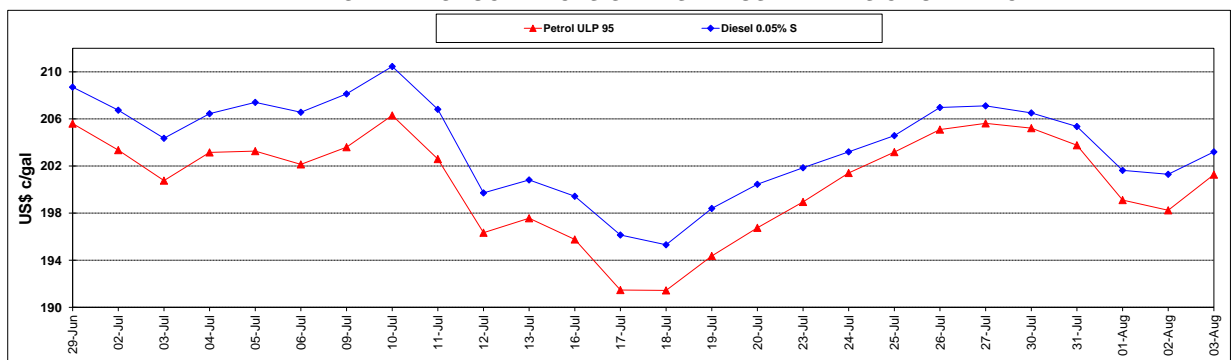
	PETROL 95	PETROL 93	DIESEL 0.05%	DIESEL 0.005%	ILL. PAR.
- MOVEMENT IN INTERNATIONAL PRODUCT PRICES	(3.902)	(3.507)	5.210	5.444	4.358
- MOVEMENT IN EXCHANGE RATE	10.759	10.582	10.901	10.960	11.034
AVERAGE UNIT OVER/(UNDER) RECOVERY 27/07/2018 - 03/08/2018	6.857	7.075	16.111	16.404	15.393

R/\$ EXCHANGE RATE - (R/\$13.4573 - 03/08/2018)

EXCHANGE RATE USED IN BASIC FUEL PRICE



INTERNATIONAL PRODUCT PRICES OF BASKET USED IN BASIC FUEL PRICE



BASIC FUEL PRICE IN SA CENTS PER LITRE

