

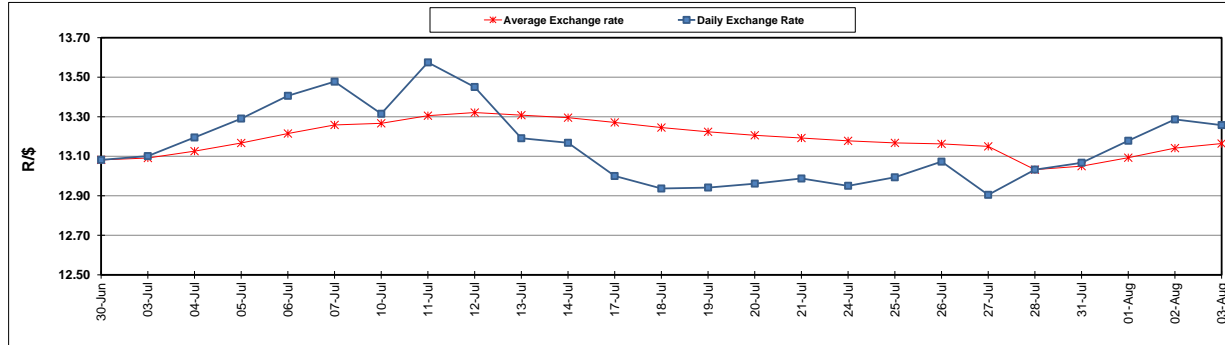
	PETROL 95 ULP	PETROL 93 ULP & LRP	DIESEL 0.05%	DIESEL 0.005%	ILL. PAR.
GAUTENG PUMP PRICE (SA c/l) AS FROM 02/08/2017	1 305.000	1 282.000	-	-	-
WHOLESALE PRICE (SA c/l) AS FROM 02/08/2017	-	-	1 126.330	1 131.730	683.088
SINGLE NATIONAL MAXIMUM RETAIL PRICE	-	-	-	-	876.000
BASIC FUEL PRICE - 03/08/2017 (SA c/l)	583.295	567.479	568.851	576.015	568.367
PRESS RELEASE CONTRIBUTION TO BFP 02/08/2017 - 03/08/2017 (SA c/l)	523.670	510.670	514.630	520.030	512.128
UNIT OVER/(UNDER) RECOVERY (SA c/l) - 03/08/2017	(59.625)	(56.809)	(54.221)	(55.985)	(56.239)
AVERAGE BASIC FUEL PRICE 28/07/2017 - 03/08/2017	575.523	560.342	563.364	569.876	561.276
AVERAGE UNIT OVER/(UNDER) RECOVERY 28/07/2017 - 03/08/2017	(63.253)	(61.072)	(66.134)	(67.846)	(64.748)

ANALYSIS MOVEMENT OF AVERAGE OVER/(UNDER) RECOVERY

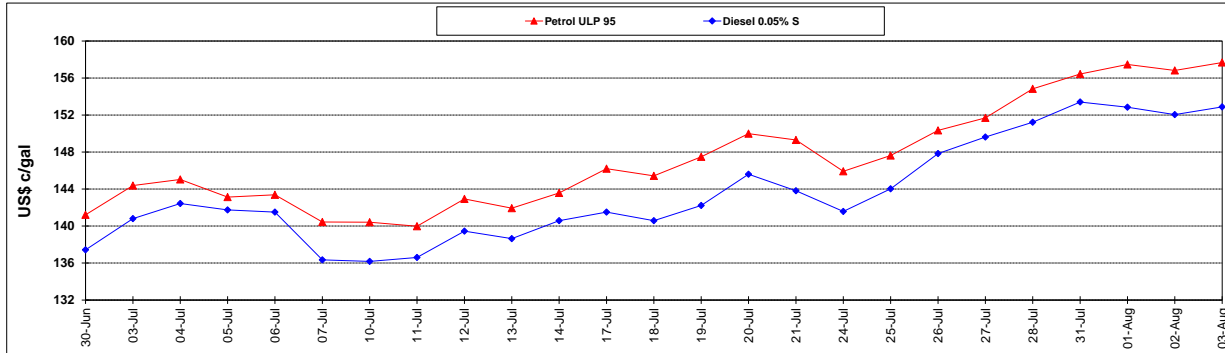
	PETROL 95	PETROL 93	DIESEL 0.05%	DIESEL 0.005%	ILL. PAR.
- MOVEMENT IN INTERNATIONAL PRODUCT PRICES	(62.623)	(60.459)	(65.518)	(67.223)	(64.134)
- MOVEMENT IN EXCHANGE RATE	(0.630)	(0.613)	(0.616)	(0.623)	(0.614)
AVERAGE UNIT OVER/(UNDER) RECOVERY 28/07/2017 - 03/08/2017	(63.253)	(61.072)	(66.134)	(67.846)	(64.748)

R/\$ EXCHANGE RATE - (R/\$ 13.2575 - 03/08/2017)

EXCHANGE RATE USED IN BASIC FUEL PRICE



INTERNATIONAL PRODUCT PRICES OF BASKET USED IN BASIC FUEL PRICE



BASIC FUEL PRICE IN SA CENTS PER LITRE

