

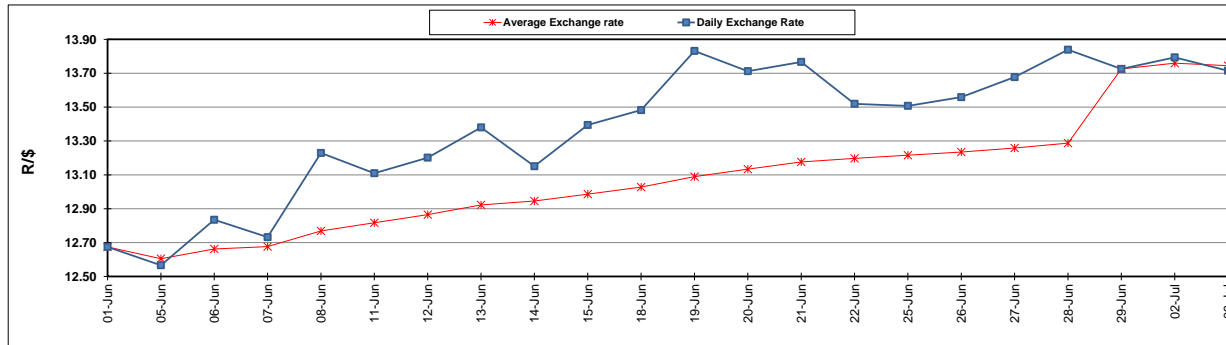
	PETROL 95 ULP	PETROL 93 ULP & LRP	DIESEL 0.05%	DIESEL 0.005%	ILL. PAR.
GAUTENG PUMP PRICE (SA c/l) AS FROM 04/07/2018	1 602.000	1 581.000	-	-	-
WHOLESALE PRICE (SA c/l) AS FROM 04/07/2018	-	-	1 444.830	1 449.230	949.088
SINGLE NATIONAL MAXIMUM RETAIL PRICE	-	-	-	-	1 228.000
BASIC FUEL PRICE - 03/07/2018 (SA c/l)	762.975	751.713	779.043	783.933	793.268
PRESS RELEASE CONTRIBUTION TO BFP 29/09/2018 - 03/07/2018 (SA c/l)	727.070	712.070	745.630	752.030	754.128
UNIT OVER/(UNDER) RECOVERY - 03/07/2018 (SA c/l)	(35.905)	(39.643)	(33.413)	(31.903)	(39.140)
AVERAGE BASIC FUEL PRICE 29/06/2018 - 03/07/2018	773.860	762.992	789.108	793.884	801.532
AVERAGE UNIT OVER/(UNDER) RECOVERY 29/06/2018 - 03/07/2018	(46.790)	(50.922)	(43.478)	(41.854)	(47.404)

ANALYSIS MOVEMENT OF AVERAGE OVER/(UNDER) RECOVERY

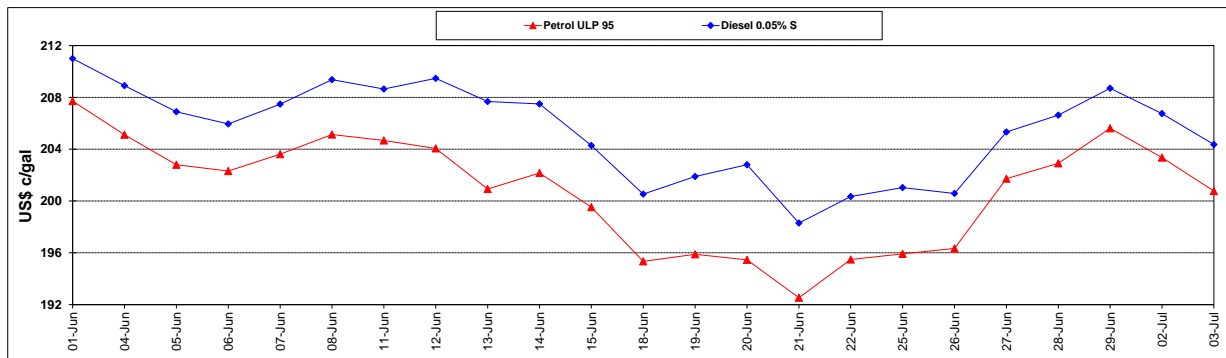
	PETROL 95	PETROL 93	DIESEL 0.05%	DIESEL 0.005%	ILL. PAR.
- MOVEMENT IN INTERNATIONAL PRODUCT PRICES	(21.042)	(25.536)	(17.223)	(15.440)	(20.736)
- MOVEMENT IN EXCHANGE RATE	(25.748)	(25.386)	(26.255)	(26.414)	(26.668)
AVERAGE UNIT OVER/(UNDER) RECOVERY 29/06/2018 - 03/07/2018	(46.790)	(50.922)	(43.478)	(41.854)	(47.404)

R/\$ EXCHANGE RATE - (R/\$13.7145 - 03/07/2018)

EXCHANGE RATE USED IN BASIC FUEL PRICE



INTERNATIONAL PRODUCT PRICES OF BASKET USED IN BASIC FUEL PRICE



BASIC FUEL PRICE IN SA CENTS PER LITRE

