

UPDATE OF THE BASIC FUEL PRICE

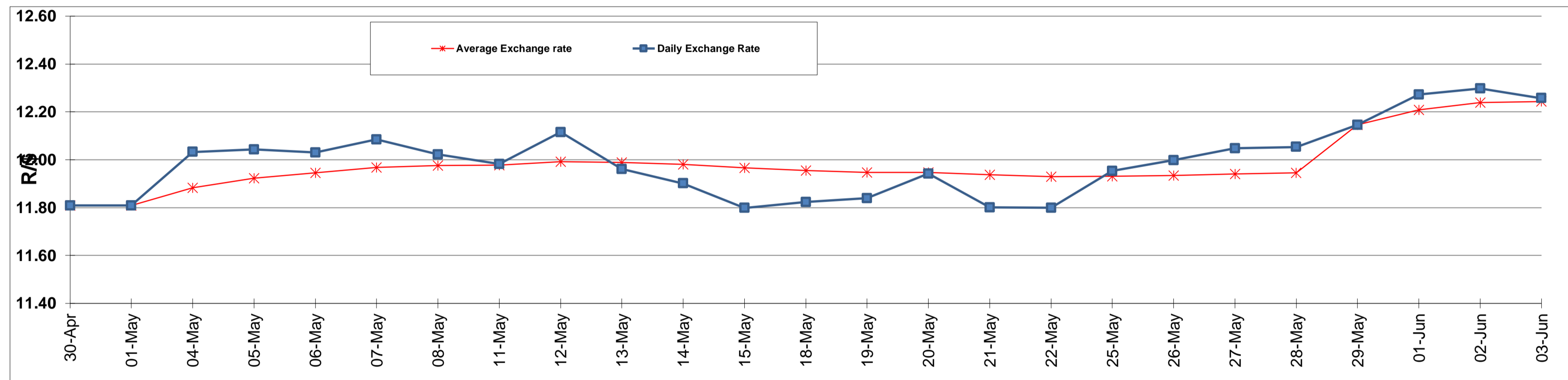
	PETROL 95 ULP	PETROL 93 ULP & LRP	DIESEL 0.05%	DIESEL 0.005%	ILL. PAR.
GAUTENG PUMP PRICE (SA c/l) AS FROM 03/06/2015	1,336.000	1,308.000	-	-	-
WHOLESALE PRICE (SA c/l) AS FROM 03/06/2015	-	-	1,166.790	1,170.190	780.828
SINGLE NATIONAL MAXIMUM RETAIL PRICE	-	-	-	-	1,006.000
BASIC FUEL PRICE - 03/06/2015 (SA c/l)	685.871	672.854	643.571	646.591	628.605
PRESS RELEASE CONTRIBUTION TO BFP 03/06/2015 - 03/06/2015 (SA c/l)	662.650	664.650	638.630	642.030	623.128
UNIT OVER/(UNDER) RECOVERY (SA c/l) - 03/06/2015	(23.221)	(8.204)	(4.941)	(4.561)	(5.477)
AVERAGE BASIC FUEL PRICE 29/05/2015 - 03/06/2015	685.782	672.527	643.602	646.697	627.889
AVERAGE UNIT OVER/(UNDER) RECOVERY 29/05/2015 - 03/06/2015	(58.382)	(58.127)	(41.722)	(39.167)	(36.261)

ANALYSIS MOVEMENT OF AVERAGE OVER/(UNDER) RECOVERY

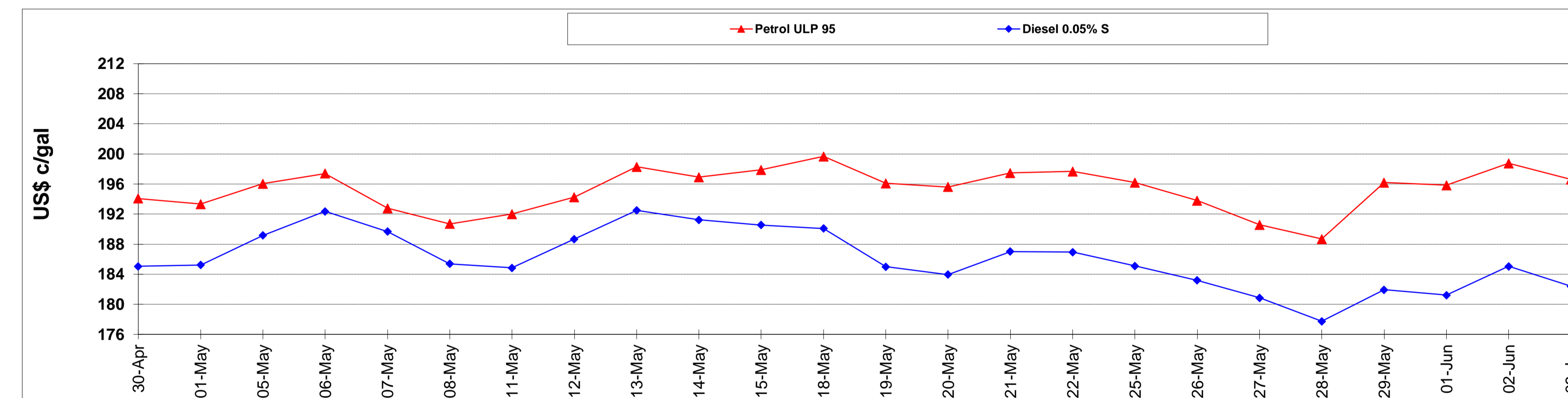
	PETROL 95	PETROL 93	DIESEL 0.05%	DIESEL 0.005%	ILL. PAR.
- MOVEMENT IN INTERNATIONAL PRODUCT PRICES	(41.696)	(41.763)	(26.062)	(23.432)	(20.983)
- MOVEMENT IN EXCHANGE RATE	(16.686)	(16.364)	(15.660)	(15.735)	(15.278)
AVERAGE UNIT OVER/(UNDER) RECOVERY 29/05/2015 - 03/06/2015	(58.382)	(58.127)	(41.722)	(39.167)	(36.261)

R/\$ EXCHANGE RATE - (R/\$ 12.2574 - 03/06/2015)

EXCHANGE RATE USED IN BASIC FUEL PRICE



INTERNATIONAL PRODUCT PRICES OF BASKET USED IN BASIC FUEL PRICE



BASIC FUEL PRICE IN SA CENTS PER LITRE

