

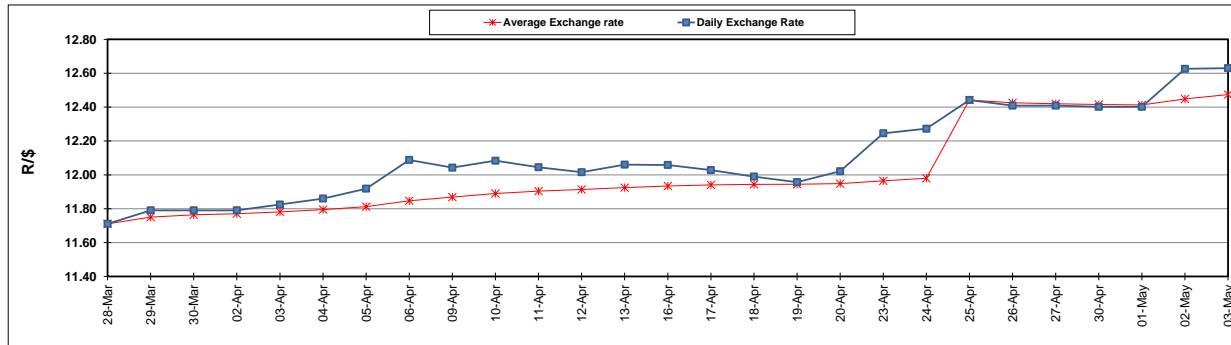
	PETROL 95 ULP	PETROL 93 ULP & LRP	DIESEL 0.05%	DIESEL 0.005%	ILL. PAR.
GAUTENG PUMP PRICE (SA c/l) AS FROM 02/05/2018	1 497.000	1 472.000	-	-	-
WHOLESALE PRICE (SA c/l) AS FROM 02/05/2018	-	-	1 333.830	1 338.230	845.088
SINGLE NATIONAL MAXIMUM RETAIL PRICE	-	-	-	-	1 089.000
BASIC FUEL PRICE - 03/05/2018 (SA c/l)	691.871	679.740	714.483	720.337	726.582
PRESS RELEASE CONTRIBUTION TO BFP 02/05/2018 - 03/05/2018 (SA c/l)	645.070	630.070	660.630	665.030	672.128
UNIT OVER/(UNDER) RECOVERY - 03/05/2018 (SA c/l)	(46.801)	(49.670)	(53.853)	(55.307)	(54.454)
AVERAGE BASIC FUEL PRICE 25/04/2018 - 03/05/2018	691.472	677.024	711.471	716.723	726.340
AVERAGE UNIT OVER/(UNDER) RECOVERY 25/04/2018 - 03/05/2018	(81.402)	(81.954)	(92.984)	(93.121)	(91.354)

ANALYSIS MOVEMENT OF AVERAGE OVER/(UNDER) RECOVERY

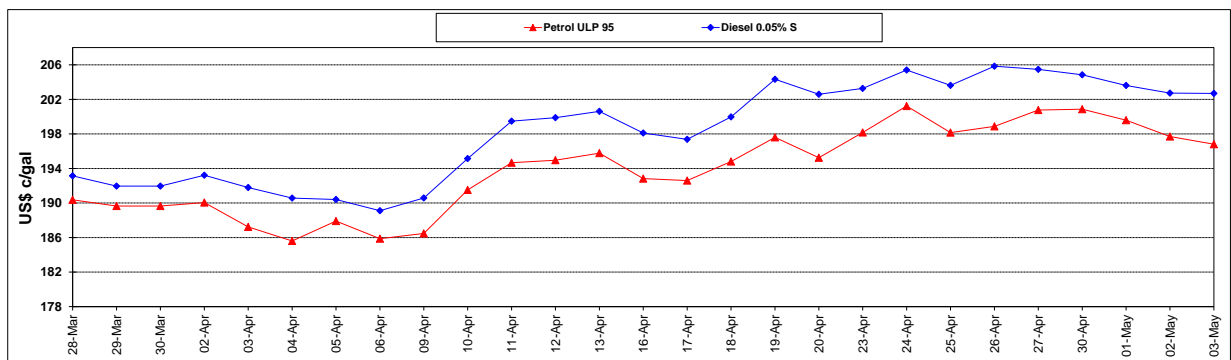
	PETROL 95	PETROL 93	DIESEL 0.05%	DIESEL 0.005%	ILL. PAR.
- MOVEMENT IN INTERNATIONAL PRODUCT PRICES	(53.996)	(55.121)	(64.785)	(64.715)	(62.567)
- MOVEMENT IN EXCHANGE RATE	(27.406)	(26.833)	(28.199)	(28.407)	(28.788)
AVERAGE UNIT OVER/(UNDER) RECOVERY 25/04/2018 - 03/05/2018	(81.402)	(81.954)	(92.984)	(93.122)	(91.354)

R/\$ EXCHANGE RATE - (R/\$12.6300 - 03/05/2018)

EXCHANGE RATE USED IN BASIC FUEL PRICE



INTERNATIONAL PRODUCT PRICES OF BASKET USED IN BASIC FUEL PRICE



BASIC FUEL PRICE IN SA CENTS PER LITRE

