

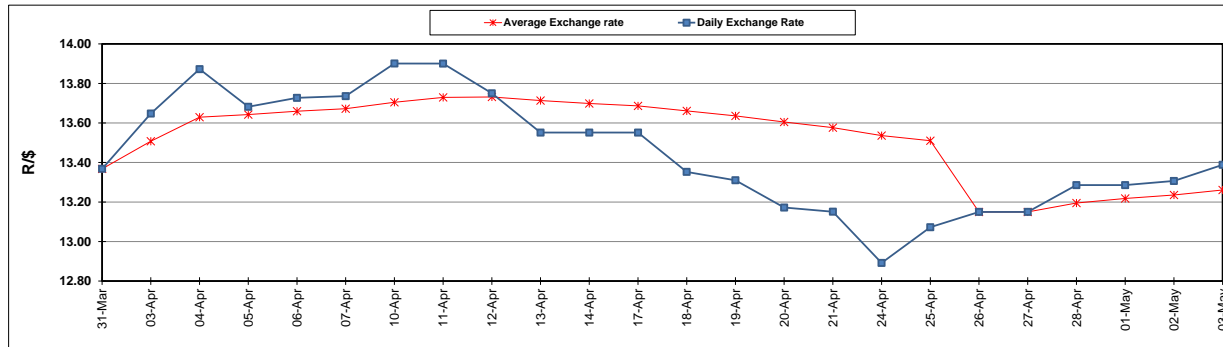
	PETROL 95 ULP	PETROL 93 ULP & LRP	DIESEL 0.05%	DIESEL 0.005%	ILL. PAR.
GAUTENG PUMP PRICE (SA c/l) AS FROM 03/05/2017	1 379.000	1 357.000	-	-	-
WHOLESALE PRICE (SA c/l) AS FROM 03/05/2017	-	-	1 180.330	1 184.730	736.088
SINGLE NATIONAL MAXIMUM RETAIL PRICE	-	-	-	-	947.000
BASIC FUEL PRICE - 03/05/2017 (SA c/l)	556.098	538.254	534.237	537.850	528.049
PRESS RELEASE CONTRIBUTION TO BFP 03/05/2017 - 03/05/2017 (SA c/l)	597.670	585.670	568.630	573.030	565.128
UNIT OVER/(UNDER) RECOVERY (SA c/l) - 03/05/2017	41.572	47.416	34.393	35.180	37.079
AVERAGE BASIC FUEL PRICE 26/04/2017 - 03/05/2017	561.622	545.106	540.289	544.378	533.496
AVERAGE UNIT OVER/(UNDER) RECOVERY 26/04/2017- 03/05/2017	(4.785)	(0.269)	3.341	1.985	3.298

ANALYSIS MOVEMENT OF AVERAGE OVER/(UNDER) RECOVERY

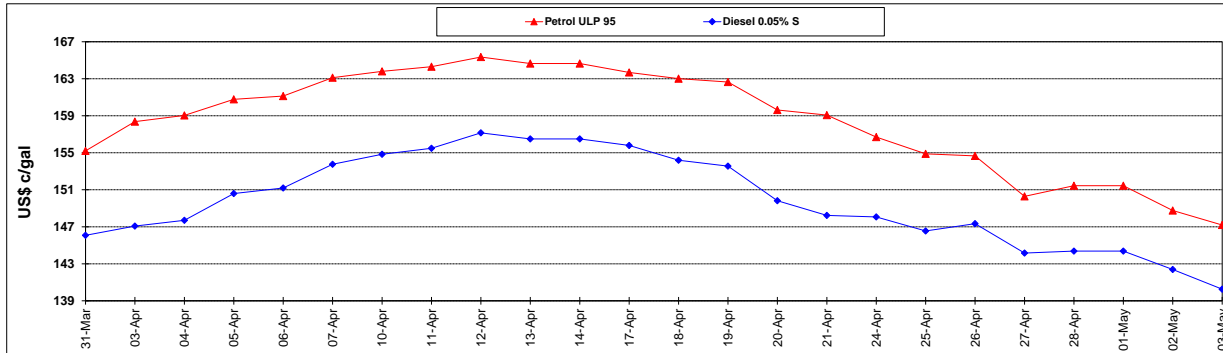
	PETROL 95	PETROL 93	DIESEL 0.05%	DIESEL 0.005%	ILL. PAR.
- MOVEMENT IN INTERNATIONAL PRODUCT PRICES	(15.356)	(10.529)	(6.828)	(8.261)	(6.743)
- MOVEMENT IN EXCHANGE RATE	10.571	10.260	10.169	10.246	10.042
AVERAGE UNIT OVER/(UNDER) RECOVERY 26/04/2017 - 03/05/2017	(4.785)	(0.269)	3.341	1.985	3.298

R/\$ EXCHANGE RATE - (R/\$ 13.3883 - 03/05/2017)

EXCHANGE RATE USED IN BASIC FUEL PRICE



INTERNATIONAL PRODUCT PRICES OF BASKET USED IN BASIC FUEL PRICE



BASIC FUEL PRICE IN SA CENTS PER LITRE

