

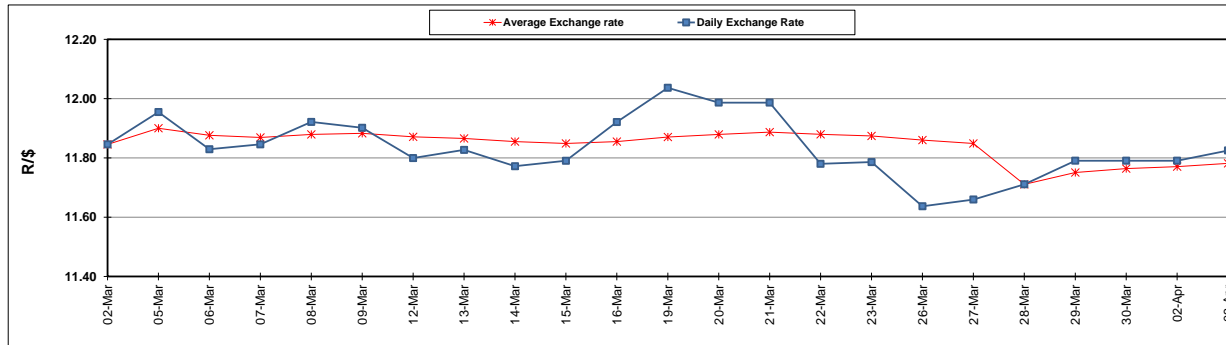
	PETROL 95 ULP	PETROL 93 ULP & LRP	DIESEL 0.05%	DIESEL 0.005%	ILL. PAR.
GAUTENG PUMP PRICE (SA c/l) AS FROM 07/03/2018	1 448.000	1 423.000	-	-	-
WHOLESALE PRICE (SA c/l) AS FROM 07/03/2018	-	-	1 274.830	1 280.230	793.088
SINGLE NATIONAL MAXIMUM RETAIL PRICE	-	-	-	-	1 026.000
BASIC FUEL PRICE - 03/04/2018 (SA c/l)	619.765	605.613	636.872	642.079	647.874
PRESS RELEASE CONTRIBUTION TO BFP 28/03/2018 - 03/04/2018 (SA c/l)	586.170	574.170	598.630	604.030	625.128
UNIT OVER/(UNDER) RECOVERY - 03/04/2018 (SA c/l)	(33.595)	(31.443)	(38.242)	(38.049)	(22.746)
AVERAGE BASIC FUEL PRICE 28/03/2018 - 03/04/2018	624.381	610.279	636.623	641.909	644.448
AVERAGE UNIT OVER/(UNDER) RECOVERY 28/03/2018 - 03/04/2018	(38.211)	(36.109)	(37.993)	(37.879)	(19.320)

ANALYSIS MOVEMENT OF AVERAGE OVER/(UNDER) RECOVERY

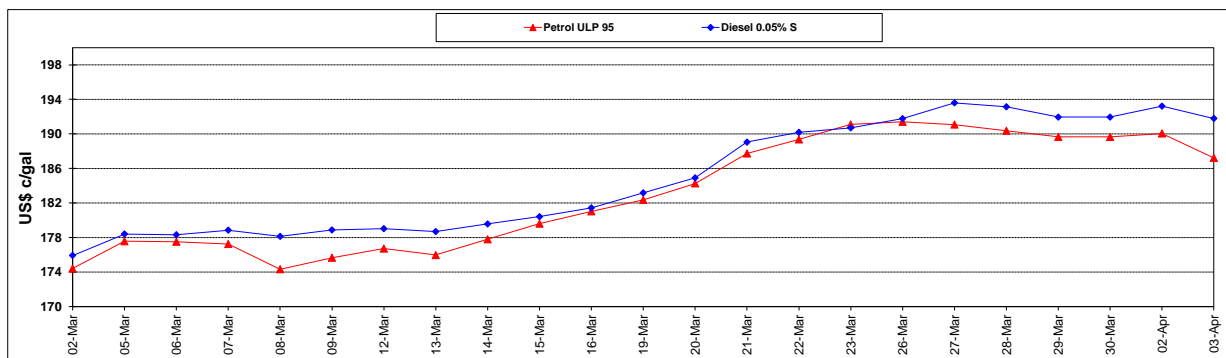
	PETROL 95	PETROL 93	DIESEL 0.05%	DIESEL 0.005%	ILL. PAR.
- MOVEMENT IN INTERNATIONAL PRODUCT PRICES	(41.783)	(39.600)	(41.635)	(41.551)	(23.007)
- MOVEMENT IN EXCHANGE RATE	3.572	3.491	3.642	3.672	3.687
AVERAGE UNIT OVER/(UNDER) RECOVERY 02/03/2018 - 03/04/2018	(38.211)	(36.109)	(37.993)	(37.879)	(19.320)

R/\$ EXCHANGE RATE - (R/\$11.8250 - 03/04/2018)

EXCHANGE RATE USED IN ULBP FUEL PRICE



INTERNATIONAL PRODUCT PRICES OF BASKET USED IN BASIC FUEL PRICE



BASIC FUEL PRICE IN SA CENTS PER LITRE

