

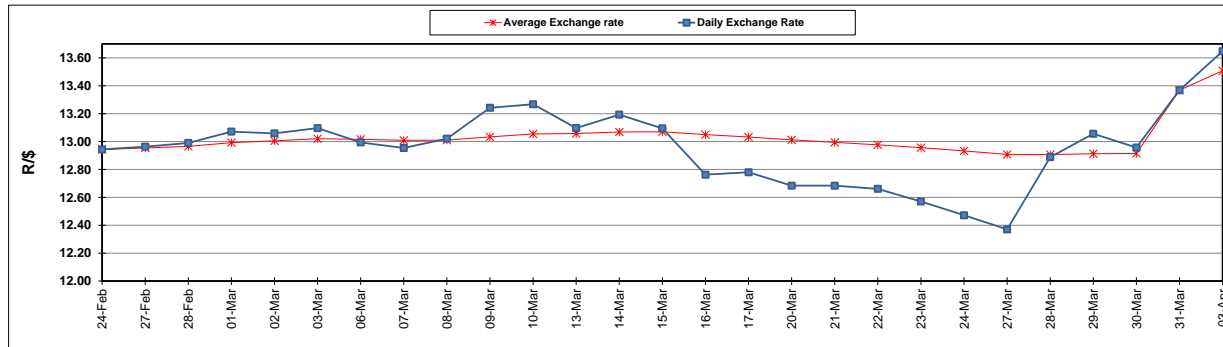
| | PETROL 95 ULP | PETROL 93 ULP & LRP | DIESEL 0.05% | DIESEL 0.005% | ILL. PAR. |
|--|------------------|------------------------|-----------------|------------------|-----------|
| GAUTENG PUMP PRICE (SA c/l) AS FROM 05/04/2017 | 1 330.000 | 1 308.000 | - | - | - |
| WHOLESALE PRICE (SA c/l) AS FROM 05/04/2017 | - | - | 1 150.330 | 1 152.730 | 702.088 |
| SINGLE NATIONAL MAXIMUM RETAIL PRICE | - | - | - | - | 901.000 |
| BASIC FUEL PRICE - 03/04/2017 (SA c/l) | 604.476 | 587.212 | 566.216 | 569.939 | 564.799 |
| PRESS RELEASE CONTRIBUTION TO BFP 31/03/2017 - 03/04/2017 (SA c/l) | 612.870 | 598.870 | 588.630 | 591.030 | 583.128 |
| UNIT OVER/(UNDER) RECOVERY (SA c/l) - 03/04/2017 | 8.394 | 11.658 | 22.414 | 21.091 | 18.329 |
| AVERAGE BASIC FUEL PRICE 31/03/2017 - 03/04/2017 | 593.772 | 576.685 | 559.826 | 563.538 | 558.635 |
| AVERAGE UNIT OVER/(UNDER) RECOVERY 31/03/2017- 03/04/2017 | 19.098 | 22.185 | 28.805 | 27.492 | 24.494 |

ANALYSIS MOVEMENT OF AVERAGE OVER/(UNDER) RECOVERY

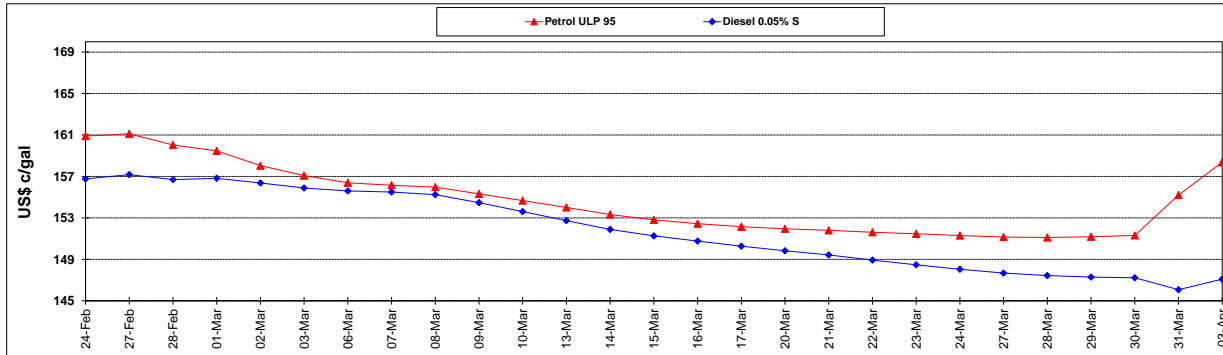
| | PETROL 95 | PETROL 93 | DIESEL 0.05% | DIESEL 0.005% | ILL. PAR. |
|--|-----------|-----------|--------------|---------------|-----------|
| - MOVEMENT IN INTERNATIONAL PRODUCT PRICES | 45.161 | 47.498 | 53.377 | 52.228 | 49.013 |
| - MOVEMENT IN EXCHANGE RATE | (26.063) | (25.313) | (24.573) | (24.736) | (24.520) |
| AVERAGE UNIT OVER/(UNDER) RECOVERY 31/03/2017 - 03/04/2017 | 19.098 | 22.185 | 28.805 | 27.492 | 24.494 |

R/\$ EXCHANGE RATE - (R/\$ 13.6475 - 03/04/2017)

EXCHANGE RATE USED IN BASIC FUEL PRICE



INTERNATIONAL PRODUCT PRICES OF BASKET USED IN BASIC FUEL PRICE



BASIC FUEL PRICE IN SA CENTS PER LITRE

