

## UPDATE OF THE BASIC FUEL PRICE

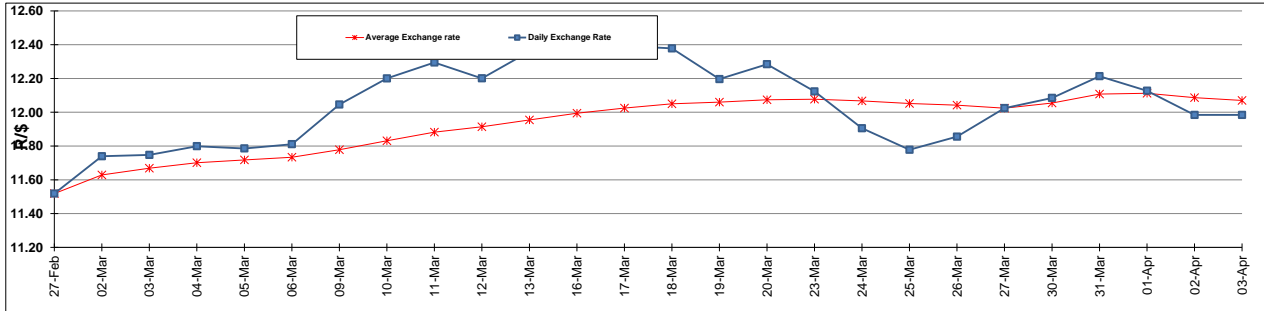
	PETROL 95 ULP	PETROL 93 ULP & LRP	DIESEL 0.05%	DIESEL 0.005%	ILL. PAR.
GAUTENG PUMP PRICE (SA c/l) AS FROM 03/04/2015	1,289.000	1,261.000	-	-	-
WHOLESALE PRICE (SA c/l) AS FROM 03/04/2015	-	-	1,122.790	1,129.190	743.828
SINGLE NATIONAL MAXIMUM RETAIL PRICE	-	-	-	-	957.000
BASIC FUEL PRICE - 03/04/2015 (SA c/l)	571.047	555.598	554.613	560.869	550.087
PRESS RELEASE CONTRIBUTION TO BFP 03/04/2015 - 03/04/2015 (SA c/l)	615.650	597.650	594.630	601.030	586.128
UNIT OVER/(UNDER) RECOVERY (SA c/l) - 03/04/2015	44.603	42.052	40.017	40.161	36.041
AVERAGE BASIC FUEL PRICE 27/03/2015 - 03/04/2015	585.155	568.636	565.362	571.588	561.783
AVERAGE UNIT OVER/(UNDER) RECOVERY 27/03/2015 - 03/04/2015	(9.205)	(7.686)	9.268	8.442	13.346

### ANALYSIS MOVEMENT OF AVERAGE OVER/(UNDER) RECOVERY

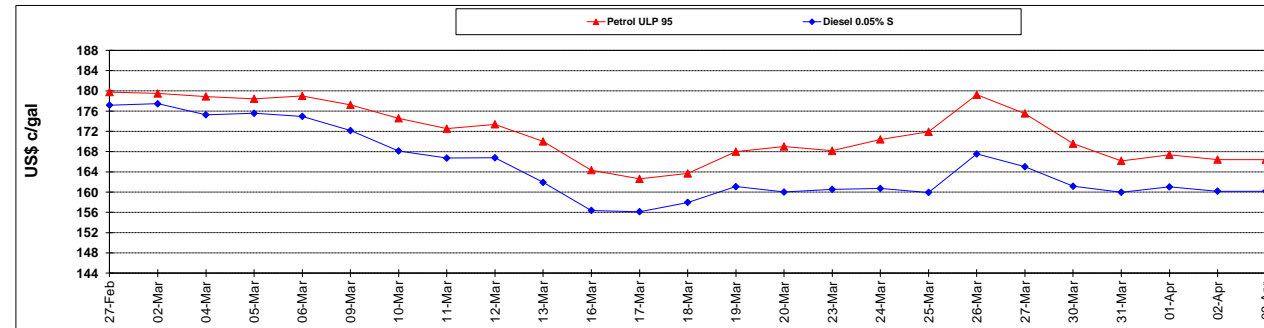
	PETROL 95	PETROL 93	DIESEL 0.05%	DIESEL 0.005%	ILL. PAR.
- MOVEMENT IN INTERNATIONAL PRODUCT PRICES	(7.877)	(6.395)	10.551	9.740	14.620
- MOVEMENT IN EXCHANGE RATE	(1.328)	(1.291)	(1.283)	(1.298)	(1.275)
AVERAGE UNIT OVER/(UNDER) RECOVERY 27/03/2015 - 03/04/2015	(9.205)	(7.686)	9.268	8.442	13.346

### R/\$ EXCHANGE RATE - (R/\$ 11.9842 - 03/04/2015)

#### EXCHANGE RATE USED IN BASIC FUEL PRICE



#### INTERNATIONAL PRODUCT PRICES OF BASKET USED IN BASIC FUEL PRICE



#### BASIC FUEL PRICE IN SA CENTS PER LITRE

