

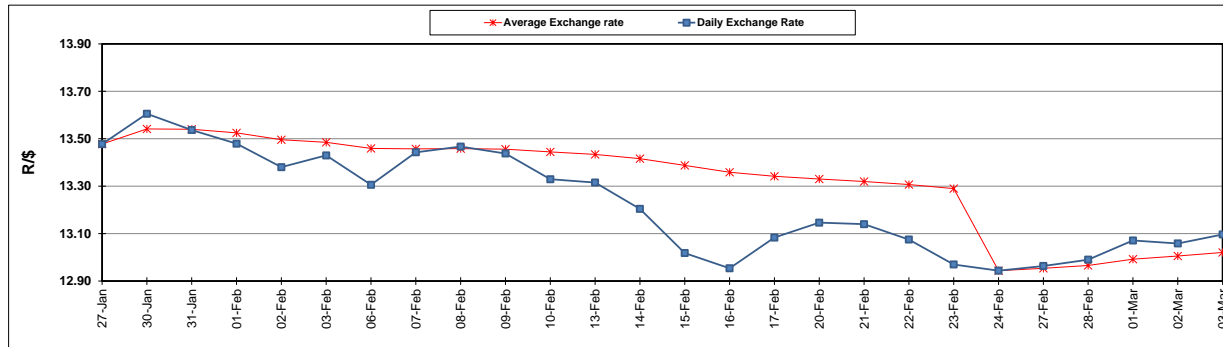
	PETROL 95 ULP	PETROL 93 ULP & LRP	DIESEL 0.05%	DIESEL 0.005%	ILL. PAR.
GAUTENG PUMP PRICE (SA c/l) AS FROM 01/03/2017	1 354.000	1 330.000	-	-	-
WHOLESALE PRICE (SA c/l) AS FROM 01/03/2017	-	-	1 160.830	1 163.230	750.588
SINGLE NATIONAL MAXIMUM RETAIL PRICE	-	-	-	-	966.000
BASIC FUEL PRICE - 03/03/2017 (SA c/l)	561.204	549.837	568.083	571.179	558.022
PRESS RELEASE CONTRIBUTION TO BFP 01/03/2017 - 03/03/2017 (SA c/l)	612.870	598.870	588.630	591.030	583.128
UNIT OVER/(UNDER) RECOVERY (SA c/l) - 03/03/2017	51.666	49.033	20.547	19.851	25.106
AVERAGE BASIC FUEL PRICE 24/02/2017 - 03/03/2017	574.801	563.570	573.479	576.590	565.685
AVERAGE UNIT OVER/(UNDER) RECOVERY 24/02/2017- 03/03/2017	42.069	39.300	16.151	15.440	21.443

ANALYSIS MOVEMENT OF AVERAGE OVER/(UNDER) RECOVERY

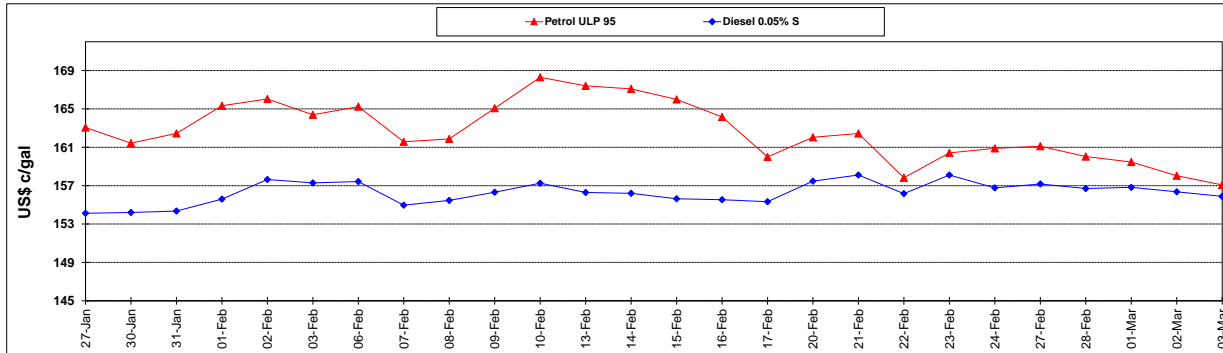
	PETROL 95	PETROL 93	DIESEL 0.05%	DIESEL 0.005%	ILL. PAR.
- MOVEMENT IN INTERNATIONAL PRODUCT PRICES	44.303	41.490	18.380	17.681	23.641
- MOVEMENT IN EXCHANGE RATE	(2.234)	(2.190)	(2.229)	(2.241)	(2.198)
AVERAGE UNIT OVER/(UNDER) RECOVERY 24/02/2017 - 03/03/2017	42.069	39.300	16.151	15.440	21.443

R/\$ EXCHANGE RATE - (R/\$ 13.0965 - 03/03/2017)

EXCHANGE RATE USED IN BASIC FUEL PRICE



INTERNATIONAL PRODUCT PRICES OF BASKET USED IN BASIC FUEL PRICE



BASIC FUEL PRICE IN SA CENTS PER LITRE

