

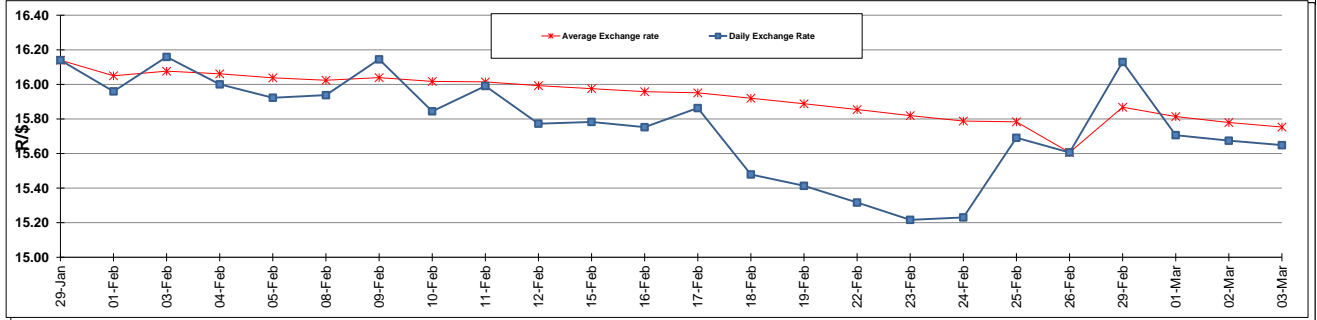
	PETROL 95 ULP	PETROL 93 ULP & LRP	DIESEL 0.05%	DIESEL 0.005%	ILL. PAR.
GAUTENG PUMP PRICE (SA c/l) AS FROM 02/03/2016	1 174.000	1 146.000	-	-	-
WHOLESALE PRICE (SA c/l) AS FROM 02/03/2016	-	-	958.170	961.570	605.028
SINGLE NATIONAL MAXIMUM RETAIL PRICE	-	-	-	-	772.000
BASIC FUEL PRICE - 03/03/2016 (SA c/l)	506.087	483.071	463.811	468.601	476.768
PRESS RELEASE CONTRIBUTION TO BFP 02/03/2016 - 03/03/2016 (SA c/l)	487.970	469.970	427.630	431.030	445.128
UNIT OVER/(UNDER) RECOVERY (SA c/l) - 03/03/2016	(18.117)	(13.101)	(36.181)	(37.571)	(31.640)
AVERAGE BASIC FUEL PRICE 03/03/2016 - 03/03/2016	508.196	485.322	462.572	466.611	478.895
AVERAGE UNIT OVER/(UNDER) RECOVERY 26/02/2016 - 03/03/2016	21.174	26.048	(43.942)	(43.981)	(43.967)

### ANALYSIS MOVEMENT OF AVERAGE OVER/(UNDER) RECOVERY

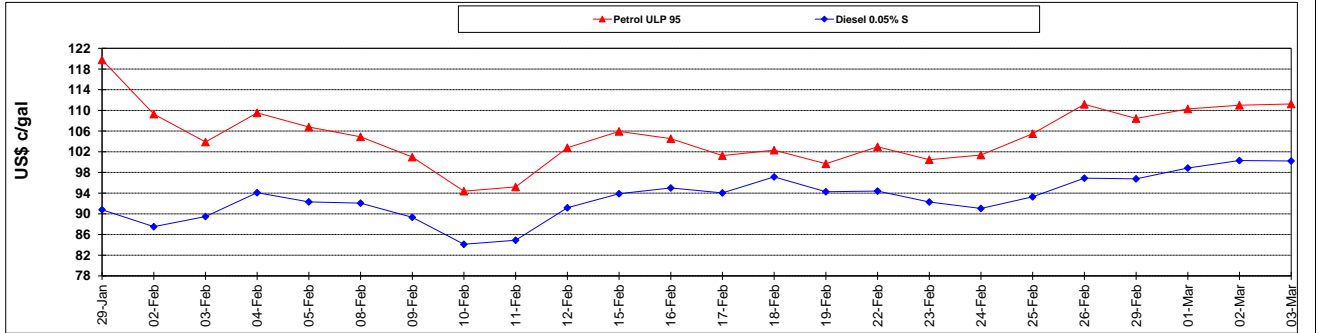
	PETROL 95	PETROL 93	DIESEL 0.05%	DIESEL 0.005%	ILL. PAR.
- MOVEMENT IN INTERNATIONAL PRODUCT PRICES	20.200	25.118	(44.829)	(44.876)	(44.885)
- MOVEMENT IN EXCHANGE RATE	0.974	0.930	0.887	0.895	0.918
AVERAGE UNIT OVER/(UNDER) RECOVERY 26/02/2016 - 03/03/2016	21.174	26.048	(43.942)	(43.981)	(43.967)

**R/\$ EXCHANGE RATE - (R/\$ 15.6485 - 03/03/2016)**

### EXCHANGE RATE USED IN BASIC FUEL PRICE



### INTERNATIONAL PRODUCT PRICES OF BASKET USED IN BASIC FUEL PRICE



### BASIC FUEL PRICE IN SA CENTS PER LITRE

