

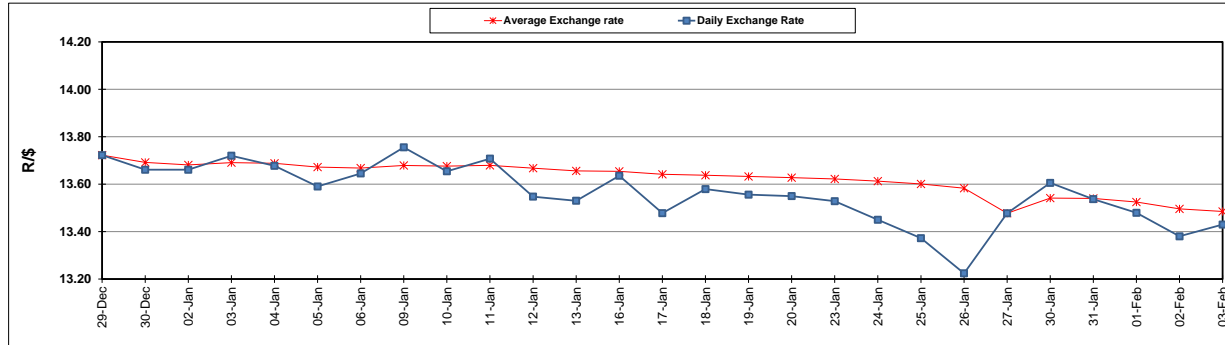
	PETROL 95 ULP	PETROL 93 ULP & LRP	DIESEL 0.05%	DIESEL 0.005%	ILL. PAR.
GAUTENG PUMP PRICE (SA c/l) AS FROM 01/02/2017	1 362.000	1 338.000	-	-	-
WHOLESALE PRICE (SA c/l) AS FROM 01/02/2017	-	-	1 162.830	1 165.230	758.588
SINGLE NATIONAL MAXIMUM RETAIL PRICE	-	-	-	-	976.000
BASIC FUEL PRICE - 03/02/2017 (SA c/l)	619.015	604.848	596.604	598.463	591.534
PRESS RELEASE CONTRIBUTION TO BFP 01/02/2017 - 03/02/2017 (SA c/l)	620.870	606.870	590.630	593.030	591.128
UNIT OVER/(UNDER) RECOVERY (SA c/l) - 03/02/2017	1.855	2.022	(5.974)	(5.433)	(0.406)
AVERAGE BASIC FUEL PRICE 27/01/2017 - 03/02/2017	617.322	602.138	590.518	592.561	584.488
AVERAGE UNIT OVER/(UNDER) RECOVERY 27/01/2017- 03/02/2017	(10.952)	(9.768)	(10.388)	(10.031)	(1.860)

ANALYSIS MOVEMENT OF AVERAGE OVER/(UNDER) RECOVERY

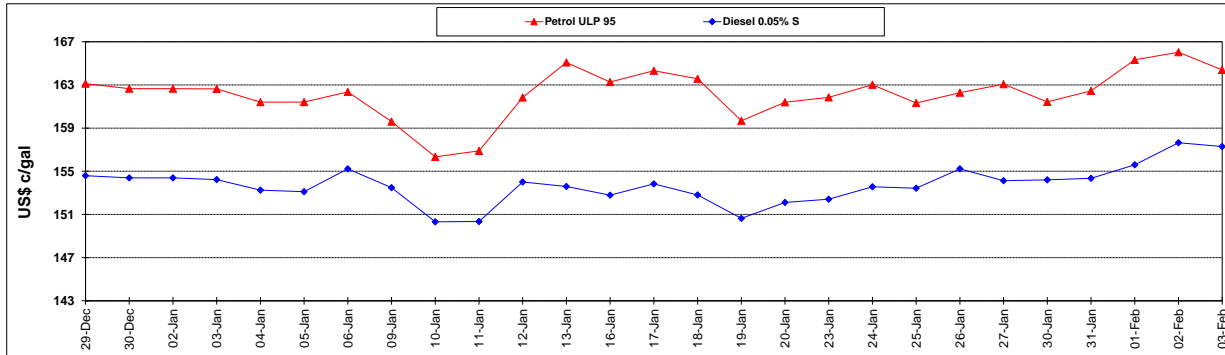
	PETROL 95	PETROL 93	DIESEL 0.05%	DIESEL 0.005%	ILL. PAR.
- MOVEMENT IN INTERNATIONAL PRODUCT PRICES	(15.447)	(14.153)	(14.688)	(14.346)	(6.116)
- MOVEMENT IN EXCHANGE RATE	4.495	4.385	4.300	4.315	4.256
AVERAGE UNIT OVER/(UNDER) RECOVERY 27/01/2017 - 03/02/2017	(10.952)	(9.768)	(10.388)	(10.031)	(1.860)

R/\$ EXCHANGE RATE - (R/\$ 13.4298- 03/02/2017)

EXCHANGE RATE USED IN BASIC FUEL PRICE



INTERNATIONAL PRODUCT PRICES OF BASKET USED IN BASIC FUEL PRICE



BASIC FUEL PRICE IN SA CENTS PER LITRE

