

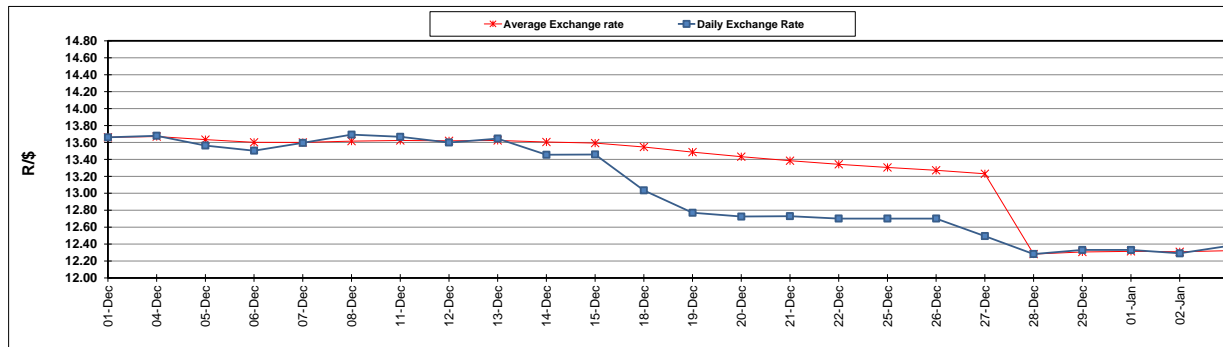
	PETROL 95 ULP	PETROL 93 ULP & LRP	DIESEL 0.05%	DIESEL 0.005%	ILL. PAR.
GAUTENG PUMP PRICE (SA c/l) AS FROM 03/01/2018	1 442.000	1 420.000	-	-	-
WHOLESALE PRICE (SA c/l) AS FROM 03/01/2018	-	-	1 273.630	1 276.030	837.388
SINGLE NATIONAL MAXIMUM RETAIL PRICE	-	-	-	-	1 082.000
BASIC FUEL PRICE - 03/01/2018 (SA c/l)	613.435	603.356	643.378	645.905	645.194
PRESS RELEASE CONTRIBUTION TO BFP 03/01/2018 - 03/01/2018 (SA c/l)	652.170	640.170	662.630	665.030	667.128
UNIT OVER/(UNDER) RECOVERY - 03/01/2018 (SA c/l)	38.735	36.814	19.252	19.125	21.934
AVERAGE BASIC FUEL PRICE 28/12/2017 - 03/01/2018	613.721	603.628	637.717	639.956	641.141
AVERAGE UNIT OVER/(UNDER) RECOVERY 28/12/2017 - 03/01/2018	65.649	59.742	42.513	45.874	48.387

### ANALYSIS MOVEMENT OF AVERAGE OVER/(UNDER) RECOVERY

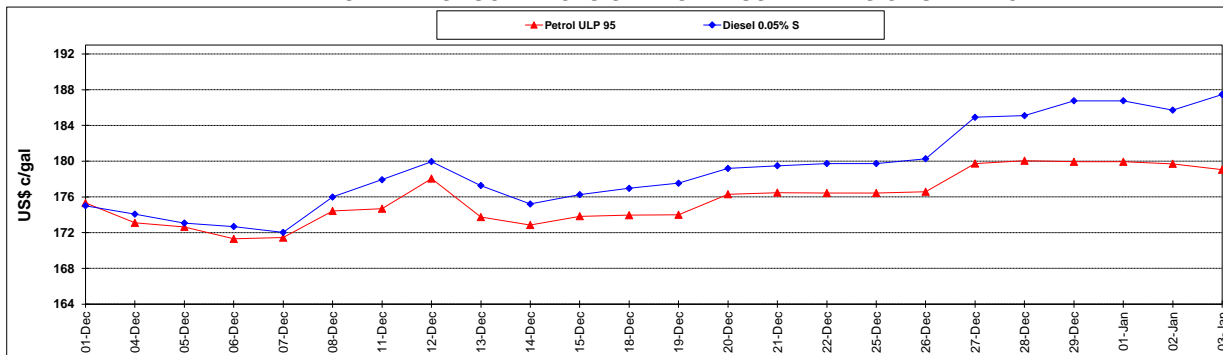
	PETROL 95	PETROL 93	DIESEL 0.05%	DIESEL 0.005%	ILL. PAR.
- MOVEMENT IN INTERNATIONAL PRODUCT PRICES	20.447	15.283	(4.457)	(1.260)	1.165
- MOVEMENT IN EXCHANGE RATE	45.202	44.459	46.970	47.134	47.222
AVERAGE UNIT OVER/(UNDER) RECOVERY 28/12/2017 - 03/01/2018	65.649	59.742	42.513	45.874	48.387

R/\$ EXCHANGE RATE - (R/\$ 12.3790 - 03/01/2018)

### EXCHANGE RATE USED IN BASIC FUEL PRICE



### INTERNATIONAL PRODUCT PRICES OF BASKET USED IN BASIC FUEL PRICE



### BASIC FUEL PRICE IN SA CENTS PER LITRE

