

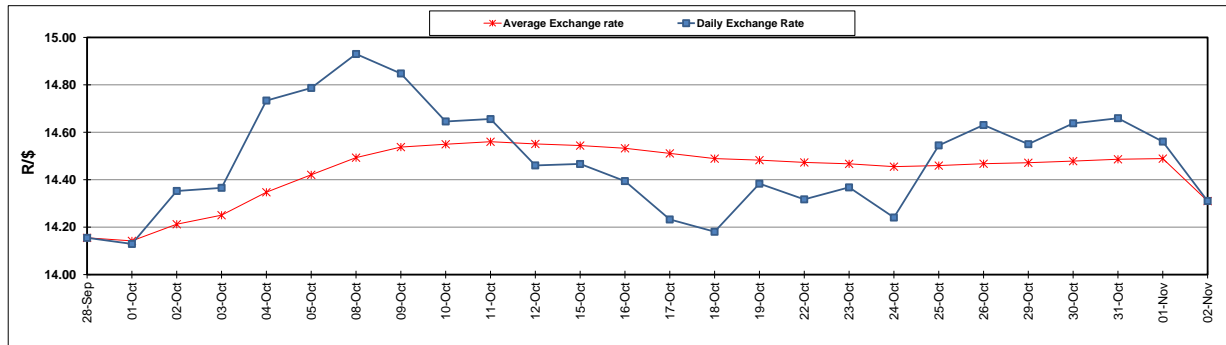
	PETROL 95 ULP	PETROL 93 ULP & LRP	DIESEL 0.05%	DIESEL 0.005%	ILL. PAR.
GAUTENG PUMP PRICE (SA c/l) AS FROM 07/11/2018	1 708.000	1 685.000	-	-	-
WHOLESALE PRICE (SA c/l) AS FROM 07/11/2018	-	-	1 612.750	1 620.150	1 085.088
SINGLE NATIONAL MAXIMUM RETAIL PRICE	-	-	-	-	1 409.000
BASIC FUEL PRICE - 02/11/2018 (SA c/l)	711.957	701.897	834.070	840.243	831.593
PRESS RELEASE CONTRIBUTION TO BFP 02/11/2018 - 02/11/2018 (SA c/l)	851.170	838.170	891.630	896.030	884.128
UNIT OVER/(UNDER) RECOVERY - 02/11/2018 (SA c/l)	139.213	136.273	57.560	55.787	52.535
AVERAGE BASIC FUEL PRICE 02/11/2018 - 02/11/2018	711.957	701.897	834.070	840.243	831.593
AVERAGE UNIT OVER/(UNDER) RECOVERY 02/11/2018 - 02/11/2018	139.213	136.273	57.560	55.787	52.535

ANALYSIS MOVEMENT OF AVERAGE OVER/(UNDER) RECOVERY

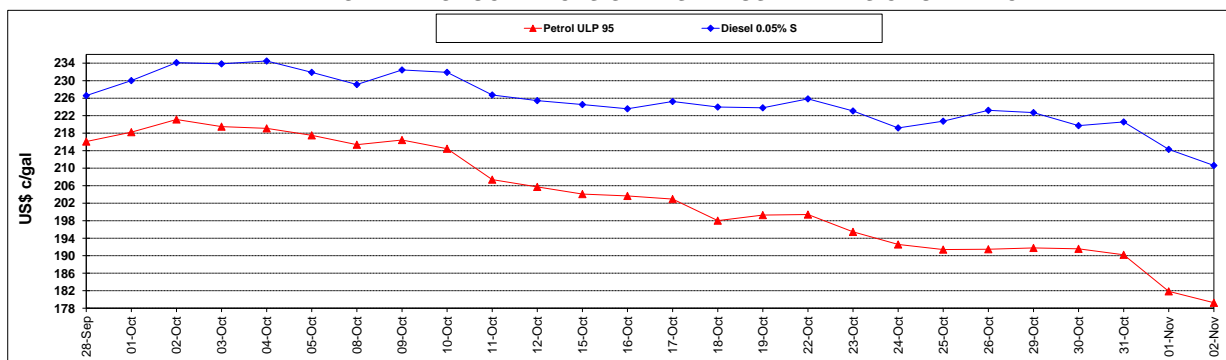
	PETROL 95	PETROL 93	DIESEL 0.05%	DIESEL 0.005%	ILL. PAR.
- MOVEMENT IN INTERNATIONAL PRODUCT PRICES	130.312	127.498	47.133	45.283	42.139
- MOVEMENT IN EXCHANGE RATE	8.901	8.775	10.427	10.504	10.396
AVERAGE UNIT OVER/(UNDER) RECOVERY 02/11/2018 - 02/11/2018	139.213	136.273	57.560	55.787	52.535

R/\$ EXCHANGE RATE - (R/\$14.3103 - 02/11/2018)

EXCHANGE RATE USED IN BASIC FUEL PRICE



INTERNATIONAL PRODUCT PRICES OF BASKET USED IN BASIC FUEL PRICE



BASIC FUEL PRICE IN SA CENTS PER LITRE

